



Llwyr Arfordir Cymru • Wales Coast Path



Llwyr y Gogledd • North Wales Path

Wales Coast Path • North Wales Path

*Bangor i Brestatyn - 60 milltir o arfordir i'w gerdded...  
Bangor to Prestatyn - 60 miles of coastal walking...*

**Mae Llwybr Arfordir Cymru** yn llwybr cerdded pell sy'n mynd o Gaer yn y gogledd i Gas-gwent yn y de: pellter o 870 milltir (1400km). Ariannwyd datblygu Llwybr Arfordir Cymru gan Lywodraeth Cynulliad Cymru, Cronfa Ddatblygu Rhanbarthol Ewrop a'r Awdurdodau Lleol mae'n pasio trwyddynt. Mae gan Ogledd Cymru hefyd **Llwybr Gogledd Cymru** sy'n mynd am 60 milltir (96km) o Fangor yn y gorllewin i Brestatyn yn y dwyrain. Mae'r mapiau canlynol yn dangos y llwybrau fel maent yn pasio trwy dair sir ogleddol Gwynedd, Conwy a Sir Ddinbych.

**The Wales Coast Path** is a long distance walking route which runs from Chester in the north to Chepstow in the south: a distance of 870 miles (1400km). Development of the Wales Coast Path has been funded by the Welsh Assembly Government, the European Regional Development Fund and the Local Authorities through which it passes. North Wales also benefits from having the **North Wales Path** which runs for 60 miles (96km) from Bangor in the west to Prestatyn in the east. These series of maps show you the routes as they pass through the three northern counties of Gwynedd, Conwy and Denbighshire.



### Public transport:

The North Wales coast benefits from having good rail and bus links to all of its communities. For information on bus & rail timetables visit:

[www.traveline-cymru.info](http://www.traveline-cymru.info)  
0871 200 22 33

National Rail enquiries:  
08457 48 49 50

### Tourist information:

Gwynedd: 01766 771000

Conwy: 01492 577577

Denbighshire: 01824 708242

### More information on walks in North Wales:

**Gwynedd:**  
[www.gwynedd.gov.uk](http://www.gwynedd.gov.uk)  
Tel: 01766 771000

**Conwy:**  
[www.conwy.gov.uk/countryside](http://www.conwy.gov.uk/countryside)  
Tel: 01492 575290

**Denbighshire:**  
[www.denbighshire.gov.uk/countryside](http://www.denbighshire.gov.uk/countryside)  
Tel: 01352 810614

**Snowdonia National Park**  
[www.eryri-npa.gov.uk](http://www.eryri-npa.gov.uk)  
Tel: 01766 770274

**Clwydian Range Area of Outstanding Natural Beauty**  
[www.clwydianrangeaonb.org.uk](http://www.clwydianrangeaonb.org.uk)

### Cycle information:

For information on cycle routes in the area:  
[www.sustrans.org.uk](http://www.sustrans.org.uk)  
0845 113 0065

## Cludiant cyhoeddus:

Mae llwybr Gogledd Cymru'n elwa o gael cysylltiadau rheilffordd a bysiau da ym mhob ur o'i gymunedau. Am wybodaeth am amserlenni bysys a rheilffyrdd ewch i:

[www.traveline-cymru.info](http://www.traveline-cymru.info)  
0871 200 22 33

Ymholiadau Rheilffordd Cenedlaethol:  
08457 48 49 50

## Canolfannau croeso:

Gwynedd: 01766 771000

Conwy: 01492 577577

Sir Dinbych: 01824 708242

## Am fwy o wybodaeth am lwybrau yng Ngogledd Cymru:

### Gwynedd:

[www.gwynedd.gov.uk](http://www.gwynedd.gov.uk)  
Ffôn: 01766 771000

### Conwy:

[www.conwy.gov.uk/cefngwlad](http://www.conwy.gov.uk/cefngwlad)  
Ffôn: 01492 575290

### Sir Dinbych:

[www.sirdinbych.gov.uk/cefngwlad](http://www.sirdinbych.gov.uk/cefngwlad)  
Ffôn: 01352 810614

### Parc Cenedlaethol Eryri

[www.eryri-npa.gov.uk](http://www.eryri-npa.gov.uk)  
Ffôn: 01766 770274

### Ardal o Harddwch Naturiol Eithriadol Bryniau Clwyd

[www.clwydianrangeaonb.org.uk/cymraeg](http://www.clwydianrangeaonb.org.uk/cymraeg)

## Gwybodaeth am ionydd beicio:

Am wybodaeth am lonydd beicio yn yr ardal:

[www.sustrans.org.uk](http://www.sustrans.org.uk)  
0845 113 0065



## Llwybr Arfordir Cymru (Iseldir) Wales Coast Path (Lowland) 73.5km/46m

	Bangor		Abergwyngregyn		Llanfairfechan		Penmaenmawr		Conwy		Llandudno		Llandrillo yn Rhos Rhos on Sea		Bae Colwyn Bay		Llanddulas		Pensarn		Bae Kinnel Bay		Rhyl		Prestatyn	
	Km	M	Km	M	Km	M	Km	M	Km	M	Km	M	Km	M	Km	M	Km	M	Km	M	Km	M	Km	M	Km	M
Bangor			9	5.5	14	8.5	18	11	26	16	40	25	47.5	29.5	51.5	32	55.5	34.5	59.5	37	64.5	40	67.5	42	73.5	46
Abergwyngregyn	9	5.5			5	3	9	5.5	17	10.5	31	19.5	38.5	24	42.5	26.5	46.5	29	50.5	31.5	55.5	34.5	58.5	36.5	64.5	40.5
Llanfairfechan	14	8.5	5	3			4	2.5	12	7.5	26	16.5	33.5	21	37.5	23.5	41.5	26	45.5	28.5	50.5	31.5	53.5	33.5	59.5	37.5
Penmaenmawr	18	11	9	5.5	4	2.5			8	5	22	14	29.5	18.5	33.5	21	37.5	23.5	41.5	26	46.5	29	49.5	31	55.5	35
Conwy	26	16	17	10.5	12	7.5	8	5			14	9	21.5	13.5	25.5	16	29.5	18.5	33.5	21	38.5	24	41.5	26	47.5	30
Llandudno	40	25	31	19.5	26	16.5	22	14	14	9			7.5	4.5	11.5	7	15.5	9.5	19.5	12	24.5	15	27.5	17	33.5	21
Llandrillo yn Rhos Rhos on Sea	47.5	29.5	38.5	24	33.5	21	29.5	18.5	21.5	13.5	7.5	4.5			4	2.5	8	5	12	7.5	17	10.5	20	12.5	26	16.5
Colwyn Bay	51.5	32	42.5	26.5	37.5	23.5	33.5	21	25.5	16	11.5	7	4	2.5			4	2.5	8	5	13	8	16	10	22	14
Llanddulas	55.5	34.5	46.5	29	41.5	26	37.5	23.5	29.5	18.5	15.5	9.5	8	5	4	2.5			4	2.5	9	5.5	12	7.5	18	11.5
Pensarn	59.5	37	50.5	31.3	45.5	28.5	41.5	26	33.5	21	19.5	12	12	7.5	8	5	4	2.5			5	3	8	5	14	9
Bae Kinnel Bay	64.5	40	55.5	34.3	50.5	31.5	46.5	29	38.5	24	24.5	15	17	10.5	13	8	9	5.5	5	3			3	2	9	6
Rhyl	67.5	42	58.5	36.5	53.5	33.5	49.5	31	41.5	26	27.5	17	20	12.5	16	10	12	7.5	8	5	3	2			6	4
Prestatyn	73.5	46	64.5	40.5	59.5	37.5	55.5	35	47.5	30	33.5	21	26	16.5	22	14	18	11.5	14	9	9	6	6	4		



## Llwybr Arfordir Cymru (Ucheldir) Wales Coast Path (Upland) 17km/13m

	Llanfairfechan		Penmaenmawr		Conwy	
	Km	M	Km	M	Km	M
Llanfairfechan	-		11	9	17	13
Penmaenmawr	11	9			6	4
Conwy	17	13	6	4		



## Llwybr y Gogledd North Wales Path 99.5km/62m

	Bangor		Bethesda		Abergwyngregyn		Llanfairfechan		Conwy		Llandudno		Llandrillo yn Rhos Rhos on Sea		Bae Colwyn Bay		Llanddulas		Pensarn		Bae Kinnel Bay		Prestatyn	
	Km	M	Km	M	Km	M	Km	M	Km	M	Km	M	Km	M	Km	M	Km	M	Km	M	Km	M	Km	M
Bangor			8	5	21	13	27	17	40	25	54	34	61.5	38.5	65.5	41	74.5	46.5	78.5	49	83.5	52	99.5	62
Bethesda	8	5			13	8	19	12	32	20	46	29	53.5	33.5	57.5	36	66.5	41.5	70.5	44	75.5	47	91.5	57
Abergwyngregyn	21	13	13	8			6	4	19	12	33	21	40.5	25.5	44.5	28	53.5	33.5	57.5	36	62.5	39	78.5	49
Llanfairfechan	27	17	19	12	6	4			13	8	27	17	34.5	21.5	38.5	24	47.5	29.5	51.5	32	56.5	35	72.5	45
Conwy	40	25	32	20	19	12	13	8			14	9	21.5	13.5	25.5	16	34.5	21.5	38.5	24	43.5	27	59.5	37
Llandudno	54	34	46	29	33	21	27	17	14	9			7.5	4.5	11.5	7	20.5	12.5	24.5	15	29.5	18	45.5	28
Llandrillo yn Rhos Rhos on Sea	61.5	38.5	53.5	33.5	40.5	25.5	34.5	21.5	21.5	13.5	7.5	4.5			4	2.5	13	8	17	10.5	22	13.5	38	23.5
Bae Colwyn Bay	65.5	41	57.5	36	44.5	28	38.5	24	25.5	16	11.5	7	4	2.5			9	5.5	13	8	18	11	34	21
Llanddulas	74.5	46.5	66.5	41.5	53.5	33.5	47.5	29.5	34.5	21.5	20.5	15	13	8	9	5.5			4	2.5	9	5.5	25	15.5
Pensarn	78.5	49	70.5	44	57.5	36	51.5	32	38.5	24	24.5	17.5	17	10.5	13	8	4	2.5			5	3	21	13
Bae Kinnel Bay	83.5	52	75.5	47	62.5	39	56.5	35	43.5	27	29.5	20.5	22	13.5	18	11	9	5.5	5	3			16	10
Prestatyn	99.5	62	91.5	57	78.5	49	72.5	45	59.5	37	45.5	30.5	38	23.5	34	21	25	15.5	21	13	16	10		

## ALLWEDD

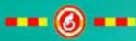
## KEY

Llwybr Arfordir Cymru  
(Iseldir)



Wales Coast Path  
(Lowland)

Llwybr Arfordir Cymru  
(Ucheldir)



Wales Coast Path  
(Upland)

Llwybr y Gogledd



North Wales Path

Llwybr troed



Footpath

Llwybr Clawdd Offa



Offa's Dyke Path

Gorsaf



Station

Maes Parcio



Carpark

Canolfan Croeso



Information Centre

Gwarchodfa Natur



Nature Reserve



Dylunio / Design: dragon design | Ff / T 01286 650848 | G/W [www.dragondesignwales.com](http://www.dragondesignwales.com)

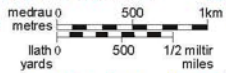
Argraffu / Print: Hartley Wilprint | G/W [www.hartleywilprint.com](http://www.hartleywilprint.com)



# MENAI BRIDGE PORTHAEATHW

# BANGOR

Hawlfraidi y Goron a hawliau cronfa ddata 2012 Arolwg Ordnans 100023380  
Deddf telegrau ac amodau'n gysylltiedig a defnyddiodd data hwn  
© Crown copyright and database rights 2012 Ordnance Survey 100023380  
Use of this data is subject to terms and conditions



MAP 2 ▶

MAP 1: Bangor



Lavan Sands /  
Traeth Lafan

LLANFAIRFECHAN

Mud & Sand

75

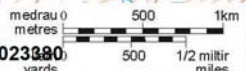
74

MAP 3 ▶

◀ MAP 1



Gall llinell Llwybr y Gogledd gael ei newid rhwng Bethesda a Tregarth.  
Line of North Wales Path between Bethesda and Tregarth is subject to change.



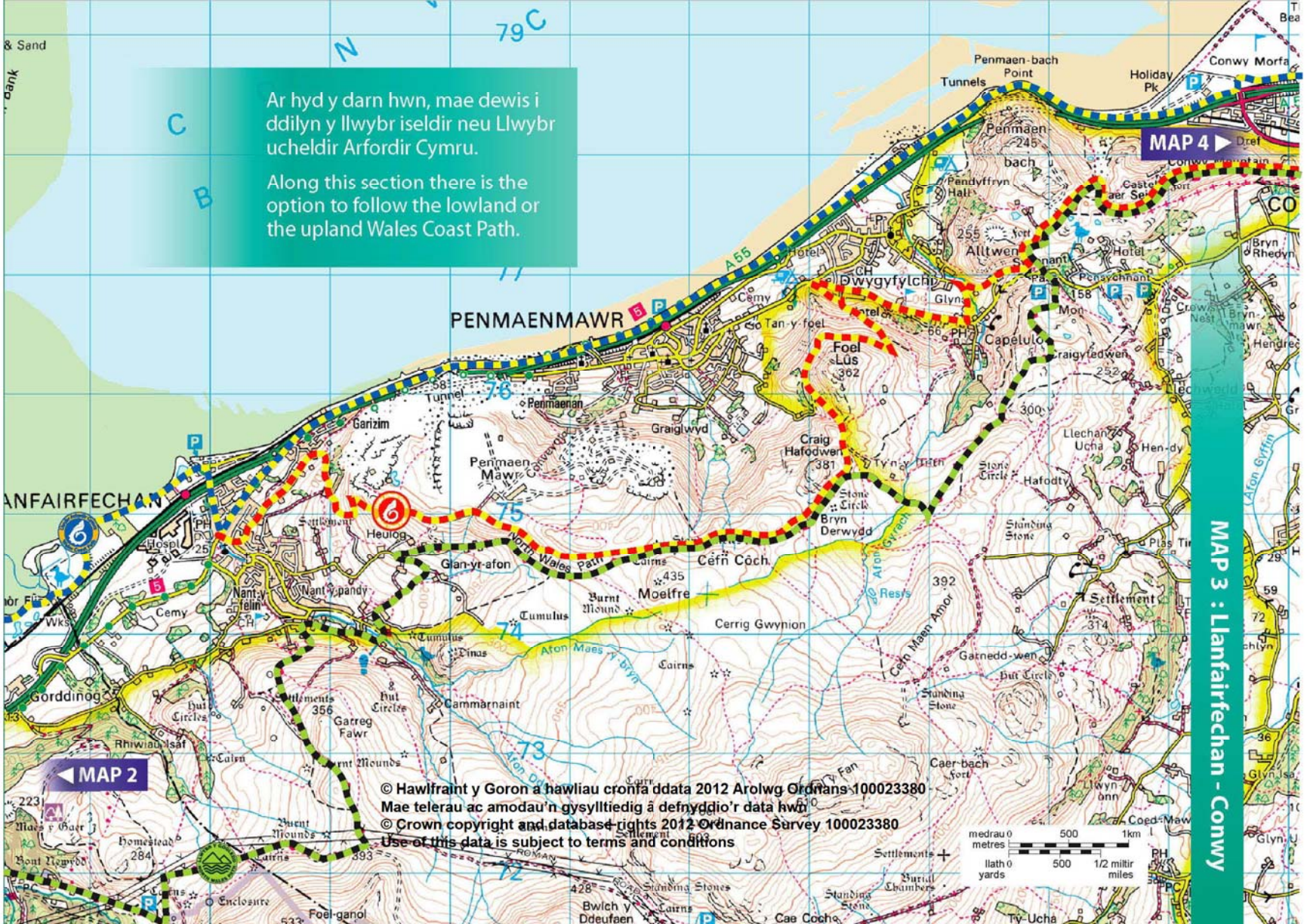
© Hawffraint y Goren a hawlfraint cronfa ddata 2012 Arolwg Ordnans 100023380  
Mae telerau ac amodau'n gysylltiedig a defnyddio'r data hwn  
© Crown copyright and database rights 2012 Ordnance Survey 100023380  
Use of this data is subject to terms and conditions

MAP 2 : Bangor - Llanfairfechan



Ar hyd y darn hwn, mae dewis i ddilyn y llwybr iseldir neu Llwybr ucheldir Arfordir Cymru.

Along this section there is the option to follow the lowland or the upland Wales Coast Path.

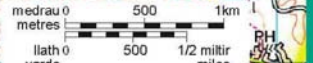


© Hawlfraint y Goron a hawliau cronfa ddata 2012 Arolwg Ordnans 100023380  
Mae telerau ac amodau'n gysylltiedig â defnyddio'r data hwn  
© Crown copyright and database rights 2012 Ordnance Survey 100023380  
Use of this data is subject to terms and conditions

MAP 3 : Lanfairfechan - Conwy

MAP 4

MAP 2



# GREAT ORME'S HEAD (Pen-y-Gogarth)



**Llwybrau i'r Copa:** Mae tri llwybr wedi eu marcio i ben y Gogarth. Mae'r rhain yn rhoi cyfle i chi weld golygfeydd godidog a gallwch weld manau o ddi-ddordeb ar y ffordd.

**Summit Trails:** Three trails are way marked to the summit of the Great Orme. These give you an opportunity to take in the spectacular views and guide you past places of interest on the way.



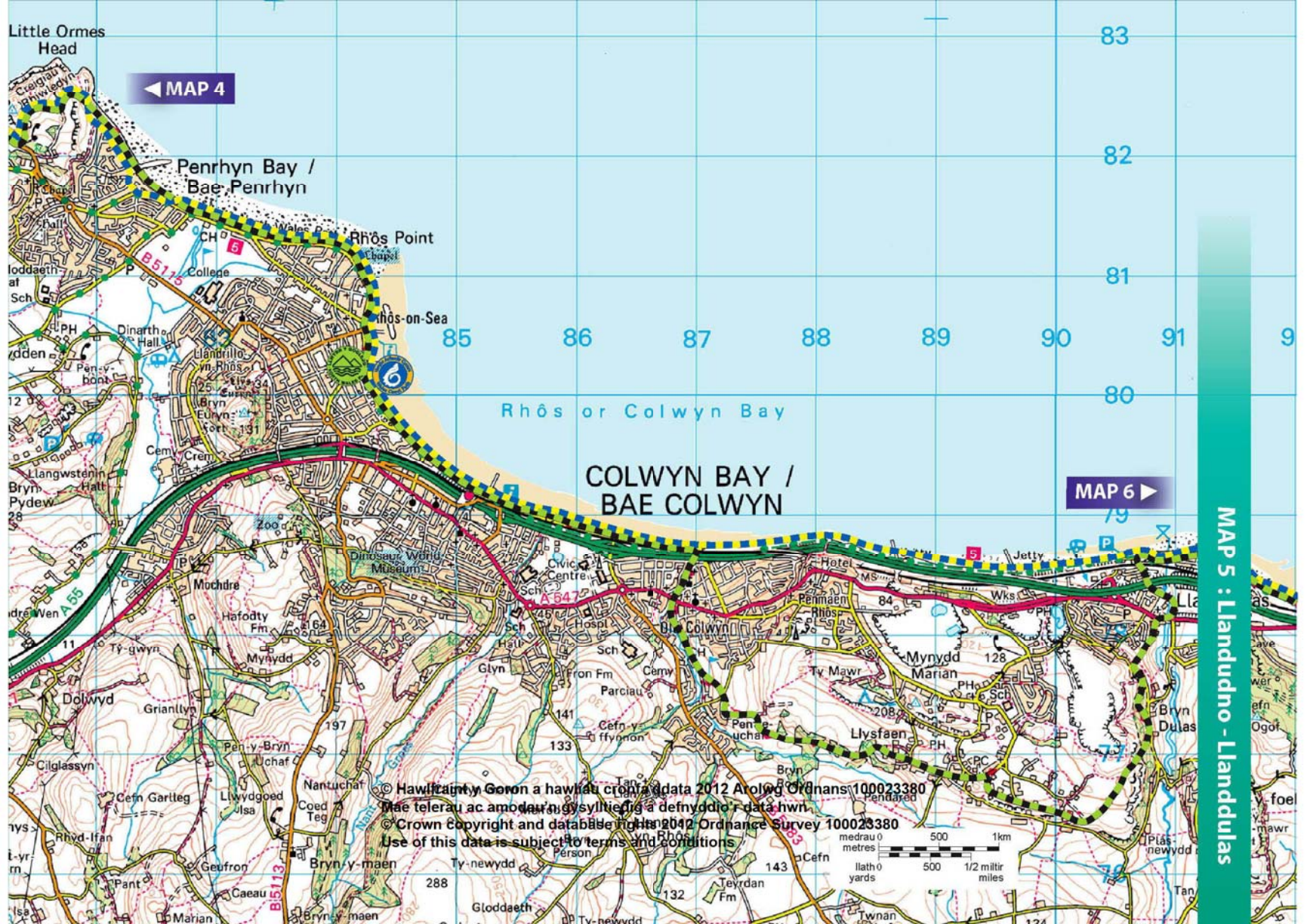
## LLANDUDNO

## Conwy

## CONWY

© Crown copyright and database rights 2012 Ordnance Survey 100023360  
 Mae telerau ac amodau'n gysylltiedig â defnyddio'r data hwn  
 © Crown copyright and database rights 2012 Ordnance Survey 100023360  
 Use of this data is subject to terms and conditions

## MAP 4 : Conwy-Llandudno



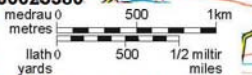
MAP 4

MAP 6

Rhôs or Colwyn Bay

COLWYN BAY / BAE COLWYN

© Crown Copyright and database rights 2012 Ordnance Survey 100023380  
Deddf 1989 a hawliau cronfa ddata 2012 Arolwg Ordnans 100023380  
Dae telerau ac amodau gysylltiedig a defnyddio'r data hwn  
© Crown Copyright and database rights 2012 Ordnance Survey 100023380  
Use of this data is subject to terms and conditions



MAP 5 : Llandudno - Llandudias

91 92 93 94 95 96 97 98

Abergele Roads /  
Angorfa Abergele

MAP 5

MAP 7

Kinmel Bay /  
Bae Cinnel

ABERGELE

MAP 6 : Llanddulas - Rhyil

© Hawlfraint y Goron a hawliau cronfa ddata 2012 Ardwg Ordnans 100023380  
Mae telerau ac amodau'n gysylltiedig a defnyddio'r data hwn.  
© Crown copyright and database rights 2012 Ordnance Survey 100023380  
Use of this data is subject to terms and conditions

0 500 1km  
0 500 1/2 millir  
metres yards  
miles





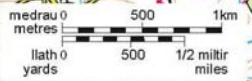
MAP 6



**Llwybr Clawdd Offa:** Mae'r llwybr pellter hir 177m/285km hwn yn thoi cyfle i gerddwyr fwynhau'r golygfeydd a'r hanes a'r ymffwrdd Cymru/Lloegr.

**The Offa's Dyke Path:** This 177m/285km long distance path gives walkers an opportunity to enjoy the spectacular scenery and history along the Welsh/English borders.

© Hawlfraint y Goron a hysbysu cronfa ddata 2012 Arolwg Ordnans 100023380  
 Mae telerau ac amodau'n gysylltiedig â defnyddio'r data hwn © Marian Cwm  
 © Crown copyright and database rights 2012 Ordnance Survey 100023380  
 Use of this data is subject to terms and conditions

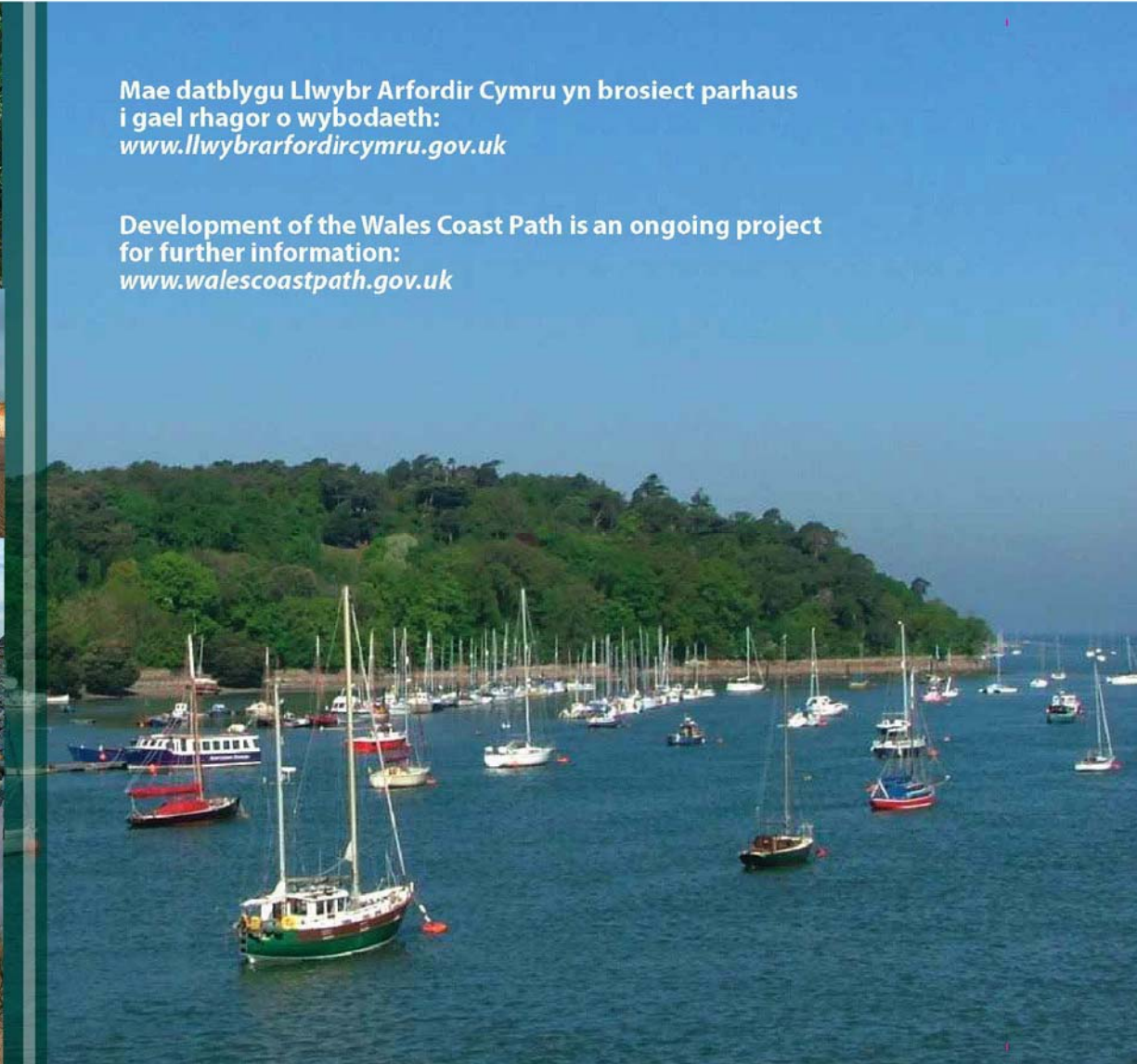


MAP 7 : Rhyl - Prestatyn



Mae datblygu Llwybr Arfordir Cymru yn brosiect parhaus  
i gael rhagor o wybodaeth:  
[www.llwybrarfordircymru.gov.uk](http://www.llwybrarfordircymru.gov.uk)

Development of the Wales Coast Path is an ongoing project  
for further information:  
[www.walescoastpath.gov.uk](http://www.walescoastpath.gov.uk)



# Dilynwch y Côd Cefn Gwlad

*Parchwch. Diogelwch. Mwynhewch.*

- ➡ Byddwch yn ddiogel - cynlluniwch o flaen llaw a dilynwch unrhyw arwyddion
- ➡ Gadewch glwydi ac eiddo fel rydych chi'n eu cael nhw
- ➡ Ewch â'ch sbwriel adref, a gofalwch eich bod yn gwarchod bywyd gwylt
- ➡ Cadwch eich ci o dan reolaeth dynn
- ➡ Byddwch yn ystyriol o bobl eraill



## Please follow The Countryside Code

*Respect. Protect. Enjoy.*

- ➡ Be safe - plan ahead and follow any signs
- ➡ Leave gates and property as you find them
- ➡ Protect plants and animals, and take your litter home
- ➡ Keep dogs under close control
- ➡ Consider other people

Rhoddwr trydyddol delirymiastru nad yw'n gyfyngedig, heb freindal, i chi weid y Data Trydyddolig ar gyfer delirymd amfannachol yn unig, o'r cyfnod y bydd ar gael gan Gyngor Bwrdeistref Sirof Conwy; Ni cheirwch gopïo, is-drolyddio, dosbarthu, gwerthu neu fet arall drolyddio bod y Data Trydyddolig ar gael mewn unrhyw ffurfi i drydydd parti; a Neilltuir harwtiau trydydd parti i orfodi telerau'r drydydd hon i'w Arotwg Ordnam.

You are granted a non-exclusive, royalty free, revocable licence solely to view the Licensed Data for non-commercial purposes for the period during which Conwy County Borough Council makes it available. You are not permitted to copy, sub-license, distribute, sell or otherwise make available the Licensed Data to third parties in any form; and Third party rights to enforce the terms of this licence shall be reserved to Ordnance Survey.

