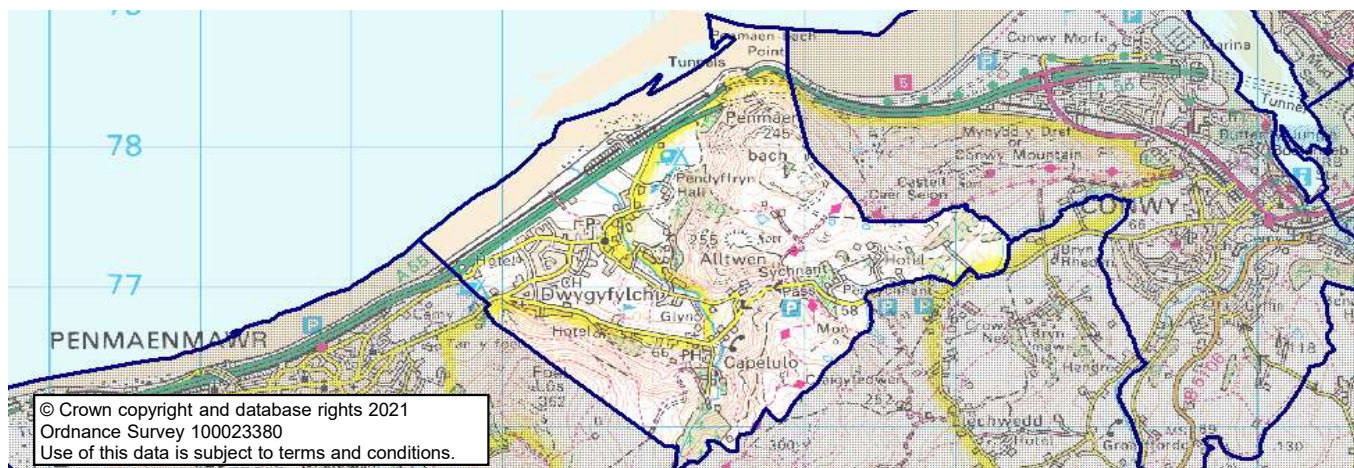


Conwy County Borough Council's ward profiles 2021

Capelulo

Map



These statistics may be used under the terms of the Open Government Licence.

Produced by the Corporate Research and Information Unit, Conwy County Borough Council, November 2021

research.unit@conwy.gov.uk

<http://www.conwy.gov.uk/statistics>

Population characteristics

Population, age and gender 2020 (ONS MYE)

	Capelulo		Conwy CB	Wales	GB
	Number	%	%	%	%
Mid-year population 2010	1,450	Change	Change	Change	Change
Mid-year population 2020	1,400	-5.0%	3.1%	3.9%	6.9%
Males	700	49.2%	48.7%	49.3%	49.4%
Females	700	50.8%	51.3%	50.7%	50.6%
Aged 0-15	200	15.9%	16.0%	17.8%	18.9%
Aged 16-29	150	11.0%	13.5%	17.5%	17.2%
Aged 30-44	200	14.4%	14.8%	17.5%	19.4%
Aged 45-64	400	29.8%	27.9%	26.2%	25.8%
Aged 65+	400	28.8%	27.9%	21.1%	18.7%
Population density 2020 (persons/ha)		2.75	1.05	1.53	4.32

Population characteristics (Census 2011)

	Capelulo		Conwy CB	Wales	E & W
	Number	%			
Born in Wales	890	59.9%	54.4%	72.7%	4.9%
Born outside the UK	32	2.2%	4.3%	5.5%	13.4%
Ethnicity - white British	1,457	98.1%	95.4%	93.2%	80.5%
Other white	14	0.9%	2.3%	2.4%	5.5%
Mixed ethnic group	9	0.6%	0.8%	1.0%	2.2%
Other ethnic groups	5	0.3%	1.5%	3.4%	11.8%
Religion - Christian	961	64.7%	64.7%	57.6%	59.3%
Other religion	14	0.9%	1.5%	2.7%	8.4%
No religion	420	28.3%	26.1%	32.1%	25.1%
(of persons aged 3+)					
Speak Welsh	478	33.3%	27.4%	19.0%	-
No skills in Welsh	704	49.1%	60.6%	73.3%	-

Health

Health and provision of care (Census 2011)

	Capelulo		Conwy CB	Wales	E & W
	Number	%			
People with limiting long term illness	325	21.9%	24.2%	22.7%	17.9%
People providing unpaid care	158	10.6%	11.8%	12.1%	10.3%

Conwy County Borough Council's ward profiles 2021

Capelulo

Housing and living arrangements

Households (Census 2011)

	Capelulo		Conwy CB	Wales	E & W
	Number	%			
Total households	690		51,177	1,302,676	23,366,044
Household composition					
All one person household	236	34.2%	33.8%	30.8%	30.2%
- one person; aged 65+	151	21.9%	17.1%	13.7%	12.4%
All households with dependent children	145	21.0%	24.5%	28.2%	29.1%
- lone parents with dependents	29	4.2%	6.2%	7.5%	7.2%
All households of only pensioners	228	33.0%	29.2%	22.9%	20.9%
Population in private households	1,481	99.7%	97.7%	98.3%	98.2%
Average household size		2.15	2.20	2.31	2.36
Household facilities					
No central heating	30	4.3%	3.6%	2.3%	2.7%
Overcrowded	26	3.8%	4.3%	5.2%	8.5%
Average rooms per household		5.7	5.6	5.7	5.4
No car	120	17.4%	21.7%	22.9%	25.6%
Tenure					
Owner occupied	564	81.7%	70.1%	67.8%	64.3%
Rented from social landlord	43	6.2%	11.6%	16.5%	17.6%
Other rented	83	12.0%	18.3%	15.7%	18.0%

Dwellings by council tax band (VOA, March 2021)

	Capelulo		Conwy CB	Wales
	Number	%		
Total dwellings	780	100%	57,720	1,458,100
Band A	10	1.3%	9.3%	14.5%
Band B	50	6.4%	14.4%	20.9%
Band C	330	42.3%	26.9%	21.8%
Band D	210	26.9%	20.5%	16.2%
Band E	130	16.7%	15.9%	13.5%
Band F	40	5.1%	8.7%	8.2%
Band G	10	1.3%	3.3%	3.7%
Band H	-	-	0.7%	0.9%
Band I	-	-	0.3%	0.4%

House prices (Land Registry, 2020; CACI PayCheck, 2020)

	Capelulo		Conwy CB	Wales	E & W
	£				
Median (All house types)	£ 187,000		£ 175,000	£ 165,000	£ 244,950
Lower quartile (All house types)	£ 150,000		£ 131,000	£ 117,000	£ 156,000
Ratio income:houseprice (median)		5.8	5.9	5.7	7.3
Ratio income:houseprice (lower quartile)		7.9	7.6	7.0	8.3

For this measure, results at ward level are based on data for Conwy CBC strategic sub areas.

Housing related benefits (DWP, August 2021)

	Capelulo		Conwy CB	Wales	GB
	Number	%			
Total claimants	70	100%	10,060	280,630	5,733,155
- housing benefit	40	57.1%	54.0%	51.9%	48.2%
- Universal Credit housing element	30	42.9%	46.0%	48.1%	51.8%
- private rented	35	45.7%	48.5%	34.7%	37.6%
- social rented	35	44.3%	50.9%	64.8%	61.5%
- households with children	35	50.0%	34.2%	36.7%	38.2%

Characteristics for housing benefit only

- single pensioner (% HB)	15	32.5%	35.3%	32.9%	33.9%
---------------------------	----	-------	-------	-------	-------

These statistics may be used under the terms of the Open Government Licence.

Produced by the Corporate Research and Information Unit, Conwy County Borough Council, November 2021

research.unit@conwy.gov.uk

<http://www.conwy.gov.uk/statistics>

Conwy County Borough Council's ward profiles 2021

Capelulo

Community safety

Crime incidences (North Wales Police)

	Capelulo		Conwy CB	Wales	E & W
(year end 31st March)	Number	Rate*			
All crime incidences 2020/21	83	59.41	82.26	72.87	78.03
Violence against the person	42	30.06	40.57	30.04	30.09
Theft & handling	6	4.29	9.22	9.47	11.80
Criminal damage & arson	7	5.01	9.20	8.71	8.04

*annual crime rate per 1,000 population

Economy and employment

Industry of employment (Census 2011)

	Capelulo		Conwy CB	Wales	E & W
	Number	%			
All in employment (aged 16-74)	700		50,093	1,363,615	26,526,336
Agriculture, forestry & fishing	6	0.9%	2.1%	1.7%	0.9%
Mining, quarrying, energy, water	13	1.9%	1.6%	1.9%	1.5%
Manufacturing	38	5.4%	4.9%	10.5%	8.9%
Construction	72	10.3%	8.2%	8.2%	7.7%
Wholesale & retail	114	16.3%	17.0%	15.6%	15.9%
Transport & storage	28	4.0%	3.7%	3.9%	5.0%
Accommodation & food services	44	6.3%	9.9%	6.2%	5.6%
Communication, finance, property	33	4.7%	5.2%	6.6%	9.7%
Professional, scientific, technical	31	4.4%	4.6%	4.3%	6.6%
Administrative & support services	24	3.4%	3.7%	4.0%	4.9%
Public administration & defence	51	7.3%	7.1%	7.9%	6.0%
Education	75	10.7%	10.2%	10.1%	9.9%
Health & social work	125	17.9%	16.7%	14.5%	12.5%
Other	46	6.6%	5.1%	4.5%	5.0%
Work mainly at or from home	47	6.7%	7.2%	5.4%	5.4%
No qualifications (all aged 16+)	270	21.1%	25.6%	25.9%	22.7%
Level 4+ qualification	347	27.2%	25.5%	24.5%	27.2%

Social class (Census, 2011)

	Capelulo		Conwy CB	Wales	E & W
	Number	%			
All aged 16-74	1,101		81,906	2,245,166	41,126,540
Managerial & professional	370	33.6%	29.0%	27.4%	31.1%
Skilled	357	32.4%	31.8%	29.4%	29.1%
Part / unskilled	278	25.2%	27.9%	28.8%	25.2%
Students & other	96	8.7%	11.3%	14.5%	14.6%

Unemployment (claimant count) (NOMIS, 2021)

	Capelulo		Conwy CB	Wales	GB
	Number	%			
October 2021	30	3.7%	4.6%	4.3%	4.8%
July 2021 (previous quarter)	30	4.0%	5.1%	4.8%	5.4%
October 2020 (previous year)	40	5.0%	6.3%	5.7%	6.2%
October 2016 (5 years ago)	10	1.1%	2.1%	2.2%	1.8%
Claimants aged 16-24 (Oct-21)*	10	-	17.4%	19.3%	17.0%
Claimants aged 50+ (Oct 21)*	5	-	29.8%	23.1%	24.3%

* Rounded to nearest 5. % is of all claimants.

These statistics may be used under the terms of the Open Government Licence.

Produced by the Corporate Research and Information Unit, Conwy County Borough Council, November 2021

research.unit@conwy.gov.uk

<http://www.conwy.gov.uk/statistics>

Conwy County Borough Council's ward profiles 2021

Capelulo

Income and benefits

Household income (CACI PayCheck, 2021)

	Capelulo		Conwy CB	Wales	GB
	£	%			
Median income (annual)	30,550		28,300	27,850	32,750
Lower quartile	17,850		16,350	15,900	18,150
Households below 60% GB median (= < £19,642)		29.0%	32.9%	34.0%	28.0%

For this measure, results at ward level are based on data for Conwy CBC strategic sub areas.

Benefits (DWP, May 2021)

There is a discontinuity in the benefits data, as Universal Credit is rolled out and starts to replace older awards systems. % is of all in that age group.

	Capelulo		Conwy CB	Wales	GB
	Number	%			
Children (aged 0-15)					
Disability Living Allowance (DLA)	5	3.2%	5.5%	4.7%	4.5%
Working age (aged 16-66)					
Universal Credit	90	11.2%	14.6%	13.9%	14.1%
Job Seekers Allowance (JSA)	0	-	0.5%	0.4%	0.4%
Employment & Support Allowance (ESA)	30	3.8%	5.9%	6.2%	4.3%
Disability Living Allowance (DLA)	0	-	0.3%	0.2%	0.6%
Personal Independence Payments (PIP)	55	6.9%	7.8%	8.1%	5.5%
Carer's Allowance	35	4.1%	3.0%	3.1%	2.4%
Pensioners (aged 67+)					
State Pension (Nov 2020)	370				
Pension Credit	35	9.6%	13.1%	14.6%	13.2%
Attendance Allowance	50	13.9%	17.2%	16.5%	13.8%
Disability Living Allowance (DLA)	15	4.1%	5.5%	8.6%	5.2%
Personal Independence Payments (PIP)	15	3.6%	4.0%	5.6%	3.6%
Carer's Allowance	10	3.0%	3.7%	4.1%	2.9%

Poverty and deprivation

Children in low income families - relative income poverty (DWP, 2019/2020)

	Capelulo		Conwy CB	Wales	GB
Children in in-work families	30	14.4%	17.4%	16.9%	16.7%
Children in out-of-work families	25	10.8%	7.4%	8.2%	6.7%
Total	55	25.2%	24.8%	25.0%	23.4%

As % all children aged 0-15. 'In work' is working 16 hrs a week or more. Relative income poverty = below 60% of UK median.

Welsh index of multiple deprivation (Welsh Government, 2019)

	Capelulo		Conwy CB	
Total LSOAs in area	1		71	
No. LSOAs in most deprived:	10%	25%	10%	25%
In each deprivation domain				
Overall Index	0	0	4	11
Income	0	0	5	14
Employment	0	0	5	15
Health	0	0	3	10
Education	0	0	1	9
Access to services	0	1	9	18
Housing	0	0	6	17
Community safety	0	0	0	4
Physical environment	0	0	6	16

Deprivation data shows how many lower super output areas (LSOAs) in the area are in the 10% and 25% most deprived LSOAs in Wales.

These statistics may be used under the terms of the Open Government Licence.

Produced by the Corporate Research and Information Unit, Conwy County Borough Council, November 2021

research.unit@conwy.gov.uk

<http://www.conwy.gov.uk/statistics>