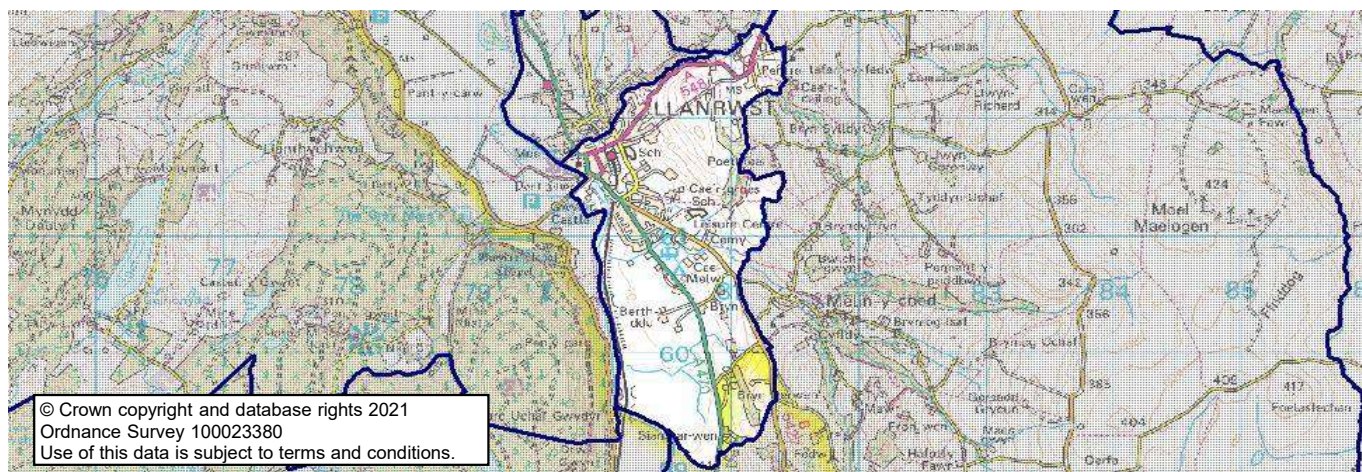


Conwy County Borough Council's ward profiles 2021

Crwst

Map



These statistics may be used under the terms of the Open Government Licence.

Produced by the Corporate Research and Information Unit, Conwy County Borough Council, November 2021

research.unit@conwy.gov.uk

<http://www.conwy.gov.uk/statistics>

Population characteristics

Population, age and gender 2020 (ONS MYE)

	Crwst		Conwy CB	Wales	GB
	Number	%	%	%	%
Mid-year population 2010	2,050	Change	Change	Change	Change
Mid-year population 2020	2,150	4.4%	3.1%	3.9%	6.9%
Males	1,050	49.6%	48.7%	49.3%	49.4%
Females	1,100	50.4%	51.3%	50.7%	50.6%
Aged 0-15	350	16.7%	16.0%	17.8%	18.9%
Aged 16-29	300	14.6%	13.5%	17.5%	17.2%
Aged 30-44	300	14.7%	14.8%	17.5%	19.4%
Aged 45-64	550	26.0%	27.9%	26.2%	25.8%
Aged 65+	600	28.0%	27.9%	21.1%	18.7%
Population density 2020 (persons/ha)		5.40	1.05	1.53	4.32

Population characteristics (Census 2011)

	Crwst		Conwy CB	Wales	E & W
	Number	%			
Born in Wales	1,580	74.6%	54.4%	72.7%	4.9%
Born outside the UK	74	3.5%	4.3%	5.5%	13.4%
Ethnicity - white British	2,036	96.1%	95.4%	93.2%	80.5%
Other white	50	2.4%	2.3%	2.4%	5.5%
Mixed ethnic group	19	0.9%	0.8%	1.0%	2.2%
Other ethnic groups	13	0.6%	1.5%	3.4%	11.8%
Religion - Christian	1,398	66.0%	64.7%	57.6%	59.3%
Other religion	16	0.8%	1.5%	2.7%	8.4%
No religion	525	24.8%	26.1%	32.1%	25.1%
(of persons aged 3+)					
Speak Welsh	1,217	59.6%	27.4%	19.0%	-
No skills in Welsh	533	26.1%	60.6%	73.3%	-

Health

Health and provision of care (Census 2011)

	Crwst		Conwy CB	Wales	E & W
	Number	%			
People with limiting long term illness	556	26.3%	24.2%	22.7%	17.9%
People providing unpaid care	198	9.3%	11.8%	12.1%	10.3%

Conwy County Borough Council's ward profiles 2021

Crwst

Housing and living arrangements

Households (Census 2011)

	Crwst		Conwy CB	Wales	E & W
	Number	%			
Total households	988		51,177	1,302,676	23,366,044
Household composition					
All one person household	373	37.8%	33.8%	30.8%	30.2%
- one person; aged 65+	204	20.6%	17.1%	13.7%	12.4%
All households with dependent children	242	24.5%	24.5%	28.2%	29.1%
- lone parents with dependents	92	9.3%	6.2%	7.5%	7.2%
All households of only pensioners	310	31.4%	29.2%	22.9%	20.9%
Population in private households	2,065	97.5%	97.7%	98.3%	98.2%
Average household size		2.09	2.20	2.31	2.36
Household facilities					
No central heating	34	3.4%	3.6%	2.3%	2.7%
Overcrowded	67	6.8%	4.3%	5.2%	8.5%
Average rooms per household		5.3	5.6	5.7	5.4
No car	281	28.4%	21.7%	22.9%	25.6%
Tenure					
Owner occupied	601	60.8%	70.1%	67.8%	64.3%
Rented from social landlord	218	22.1%	11.6%	16.5%	17.6%
Other rented	169	17.1%	18.3%	15.7%	18.0%

Dwellings by council tax band (VOA, March 2021)

	Crwst		Conwy CB	Wales
	Number	%		
Total dwellings	1,060	100%	57,720	1,458,100
Band A	180	16.8%	9.3%	14.5%
Band B	150	14.0%	14.4%	20.9%
Band C	410	38.3%	26.9%	21.8%
Band D	160	15.0%	20.5%	16.2%
Band E	100	9.3%	15.9%	13.5%
Band F	50	4.7%	8.7%	8.2%
Band G	10	0.9%	3.3%	3.7%
Band H	-	-	0.7%	0.9%
Band I	-	-	0.3%	0.4%

House prices (Land Registry, 2020; CACI PayCheck, 2020)

	Crwst		Conwy CB		Wales		E & W	
	£		£		£		£	
Median (All house types)	£	170,000	£	175,000	£	165,000	£	244,950
Lower quartile (All house types)	£	133,000	£	131,000	£	117,000	£	156,000
Ratio income:houseprice (median)		5.6		5.9		5.7		7.3
Ratio income:houseprice (lower quartile)		7.5		7.6		7.0		8.3

For this measure, results at ward level are based on data for Conwy CBC strategic sub areas.

Housing related benefits (DWP, August 2021)

	Crwst		Conwy CB	Wales	GB
	Number	%			
Total claimants	245	100%	10,060	280,630	5,733,155
- housing benefit	140	56.6%	54.0%	51.9%	48.2%
- Universal Credit housing element	105	43.4%	46.0%	48.1%	51.8%
- private rented	100	41.0%	48.5%	34.7%	37.6%
- social rented	145	60.7%	50.9%	64.8%	61.5%
- households with children	75	31.6%	34.2%	36.7%	38.2%
Characteristics for housing benefit only					
- single pensioner (% HB)	75	55.1%	35.3%	32.9%	33.9%

These statistics may be used under the terms of the Open Government Licence.

Produced by the Corporate Research and Information Unit, Conwy County Borough Council, November 2021

research.unit@conwy.gov.uk

<http://www.conwy.gov.uk/statistics>

Conwy County Borough Council's ward profiles 2021

Crwst

Community safety

Crime incidences (North Wales Police)

	Crwst		Conwy CB	Wales	E & W
(year end 31st March)	Number	Rate*			
All crime incidences 2020/21	148	68.84	82.26	72.87	78.03
Violence against the person	49	22.79	40.57	30.04	30.09
Theft & handling	27	12.56	9.22	9.47	11.80
Criminal damage & arson	42	19.53	9.20	8.71	8.04

*annual crime rate per 1,000 population

Economy and employment

Industry of employment (Census 2011)

	Crwst		Conwy CB	Wales	E & W
	Number	%			
All in employment (aged 16-74)	890		50,093	1,363,615	26,526,336
Agriculture, forestry & fishing	21	2.4%	2.1%	1.7%	0.9%
Mining, quarrying, energy, water	8	0.9%	1.6%	1.9%	1.5%
Manufacturing	65	7.3%	4.9%	10.5%	8.9%
Construction	111	12.5%	8.2%	8.2%	7.7%
Wholesale & retail	131	14.7%	17.0%	15.6%	15.9%
Transport & storage	39	4.4%	3.7%	3.9%	5.0%
Accommodation & food services	98	11.0%	9.9%	6.2%	5.6%
Communication, finance, property	39	4.4%	5.2%	6.6%	9.7%
Professional, scientific, technical	36	4.0%	4.6%	4.3%	6.6%
Administrative & support services	25	2.8%	3.7%	4.0%	4.9%
Public administration & defence	54	6.1%	7.1%	7.9%	6.0%
Education	105	11.8%	10.2%	10.1%	9.9%
Health & social work	111	12.5%	16.7%	14.5%	12.5%
Other	47	5.3%	5.1%	4.5%	5.0%
Work mainly at or from home	53	6.0%	7.2%	5.4%	5.4%
No qualifications (all aged 16+)	560	32.1%	25.6%	25.9%	22.7%
Level 4+ qualification	359	20.5%	25.5%	24.5%	27.2%

Social class (Census, 2011)

	Crwst		Conwy CB	Wales	E & W
	Number	%			
All aged 16-74	1,428		81,906	2,245,166	41,126,540
Managerial & professional	343	24.0%	29.0%	27.4%	31.1%
Skilled	464	32.5%	31.8%	29.4%	29.1%
Part / unskilled	483	33.8%	27.9%	28.8%	25.2%
Students & other	138	9.7%	11.3%	14.5%	14.6%

Unemployment (claimant count) (NOMIS, 2021)

	Crwst		Conwy CB	Wales	GB
	Number	%			
October 2021	40	3.5%	4.6%	4.3%	4.8%
July 2021 (previous quarter)	45	4.0%	5.1%	4.8%	5.4%
October 2020 (previous year)	55	4.7%	6.3%	5.7%	6.2%
October 2016 (5 years ago)	10	0.9%	2.1%	2.2%	1.8%
Claimants aged 16-24 (Oct-21)*	5	-	17.4%	19.3%	17.0%
Claimants aged 50+ (Oct 21)*	10	-	29.8%	23.1%	24.3%

* Rounded to nearest 5. % is of all claimants.

These statistics may be used under the terms of the Open Government Licence.

Produced by the Corporate Research and Information Unit, Conwy County Borough Council, November 2021

research.unit@conwy.gov.uk

<http://www.conwy.gov.uk/statistics>

Conwy County Borough Council's ward profiles 2021

Crwst

Income and benefits

Household income (CACI PayCheck, 2021)

	Crwst		Conwy CB	Wales	GB
	£	%			
Median income (annual)	28,850		28,300	27,850	32,750
Lower quartile	16,650		16,350	15,900	18,150
Households below 60% GB median (= < £19,642)		32.0%	32.9%	34.0%	28.0%

For this measure, results at ward level are based on data for Conwy CBC strategic sub areas.

Benefits (DWP, May 2021)

There is a discontinuity in the benefits data, as Universal Credit is rolled out and starts to replace older awards systems. % is of all in that age group.

	Crwst		Conwy CB	Wales	GB
	Number	%			
Children (aged 0-15)					
Disability Living Allowance (DLA)	15	3.9%	5.5%	4.7%	4.5%
Working age (aged 16-66)					
Universal Credit	190	15.4%	14.6%	13.9%	14.1%
Job Seekers Allowance (JSA)	0	-	0.5%	0.4%	0.4%
Employment & Support Allowance (ESA)	70	5.8%	5.9%	6.2%	4.3%
Disability Living Allowance (DLA)	0	-	0.3%	0.2%	0.6%
Personal Independence Payments (PIP)	100	8.3%	7.8%	8.1%	5.5%
Carer's Allowance	30	2.3%	3.0%	3.1%	2.4%
Pensioners (aged 67+)					
State Pension (Nov 2020)	545				
Pension Credit	110	18.9%	13.1%	14.6%	13.2%
Attendance Allowance	150	26.5%	17.2%	16.5%	13.8%
Disability Living Allowance (DLA)	30	5.6%	5.5%	8.6%	5.2%
Personal Independence Payments (PIP)	25	4.2%	4.0%	5.6%	3.6%
Carer's Allowance	20	3.9%	3.7%	4.1%	2.9%

Poverty and deprivation

Children in low income families - relative income poverty (DWP, 2019/2020)

	Crwst		Conwy CB	Wales	GB
Children in in-work families	55	14.8%	17.4%	16.9%	16.7%
Children in out-of-work families	20	5.6%	7.4%	8.2%	6.7%
Total	75	20.4%	24.8%	25.0%	23.4%

As % all children aged 0-15. 'In work' is working 16 hrs a week or more. Relative income poverty = below 60% of UK median.

Welsh index of multiple deprivation (Welsh Government, 2019)

	Crwst		Conwy CB	
	10%	25%	10%	25%
Total LSOAs in area	1		71	
No. LSOAs in most deprived:	10%	25%	10%	25%
In each deprivation domain				
Overall Index	0	0	4	11
Income	0	0	5	14
Employment	0	0	5	15
Health	0	0	3	10
Education	0	0	1	9
Access to services	0	0	9	18
Housing	0	0	6	17
Community safety	0	0	0	4
Physical environment	0	0	6	16

Deprivation data shows how many lower super output areas (LSOAs) in the area are in the 10% and 25% most deprived LSOAs in Wales.

These statistics may be used under the terms of the Open Government Licence.

Produced by the Corporate Research and Information Unit, Conwy County Borough Council, November 2021

research.unit@conwy.gov.uk

<http://www.conwy.gov.uk/statistics>