



The Welsh language in Conwy County Borough Research bulletin

Corporate Research and
Information Unit

August 2013

Contact us

If you have any suggestions about how we could improve this bulletin, or if you require further information, please contact us.

The Corporate Research and Information Unit
Bodlondeb,
Conwy, LL32 8DU.
Email: research.unit@conwy.gov.uk

Phone: 01492 575291

Next update – ad hoc

The Welsh language in Conwy County Borough – ad hoc research bulletin (August 2013)

Contents

Introduction	3
Headlines	4
Section 1: the 2011 Census	5
Welsh language skills	5
Age structure	5
Geographic spread	7
Change over time	9
Comparative areas	11
Section 2: Welsh language in schools	13
Section 3: language preference of Council staff	14
Appendix 1.1a – Welsh language skills by electoral division (ward), 2011	i
Appendix 1.1b – Welsh language skills by electoral division (ward), 2011	ii
Appendix 1.2a – Welsh language skills by community council area, 2011	iii
Appendix 1.2b – Welsh language skills by community council area, 2011	iv
Appendix 2.1 – change in proportion of Welsh speakers 2001-2011, by electoral division	v
Appendix 2.2 – change in proportion of Welsh speakers 2001-2011, by community council	vi

Introduction

This is an ad hoc research bulletin which has been produced by the Corporate Research and Information Unit.

The bulletin looks at key information about the Welsh language for Conwy County Borough, presenting the latest data, historical context and providing some commentary on what the data shows. It outlines some of the main findings in the 2011 Census of Population for Conwy County Borough, and looks at school census data and our latest staff survey.

Data about the socio-economic characteristics of Welsh speakers will be published as part of the Office for National Statistics' 2011 Census release programme. This data is not yet available, but the bulletin will be updated once it is.

Appendices showing data about the Welsh language at ward (electoral division) and community council level are available at the end of this bulletin.

Headlines

- The 2011 Census estimates that in Conwy County Borough there are 30,600 people aged 3 or over who are able to speak Welsh. This is 27.4% of the population. For Wales as a whole only 19% of the population are able to speak Welsh.
- The ability to speak Welsh differs between age groups:
 - The ability to speak Welsh is most prevalent amongst those of school age – overall, 49.2% of 5-15 year olds can speak Welsh)
 - Those aged 50-69 have the lowest proportions of Welsh speakers (only 20.4%), though even in this age group Conwy CB is well above the Wales average).
- In general, the incidence of Welsh speakers increases towards the west, and as one travels inland from the more highly populated coastal strip. It is:
 - at a peak in the rural southern electoral division (ward) of Uwchaled (71% Welsh speaking); and
 - at its lowest in the eastern coastal community of Towyn & Kinmel Bay (less than 12% Welsh speaking).
- However, numerically there are many more Welsh speakers in the urban areas than in the more sparsely populated rural areas. Rhos-on-Sea has over 1,350 Welsh speakers.
- Between 2001 and 2011 the number of Welsh speakers in the County Borough fell from 31,050 to 30,600 – a decrease of 450 or -6.2%. As a proportion this was a fall from 29.2% of the population aged 3+ in 2001 to 27.4% in 2011. This decline has been continuous over the past four Censuses.
- Not all areas in Conwy CB have seen a persistent decline in Welsh speaking abilities however. Between 2001 and 2011:
 - four electoral divisions saw an overall increase in Welsh speakers within their population in terms of both numbers and proportion – Penrhyn (Llandudno), Kinmel Bay, Llandrillo yn Rhos and Eglwysbach.
 - a further 11 electoral divisions saw a numeric increase in the number of Welsh speakers, even though there was a proportionate decline
- Conwy County Borough has the fifth highest proportion of Welsh speakers in its population, behind Gwynedd, Isle of Anglesey, Ceredigion and Carmarthen. Numerically, the County Borough ranks sixth.
- Conwy County Borough's 30,600 Welsh speakers make up 5.4% of the Welsh speaking population of Wales. (Our population as a whole makes up 3.8% of the total Welsh population).
- Only 12.2% of pupils in local authority schools are fluent in Welsh. 16.4% of pupils are in Welsh medium schools, which is higher than the proportion of fluent Welsh speakers, and a further 21.7% of pupils are educated in schools which provide significant schooling through the medium of Welsh.
- Conwy County Borough Council's 2013 staff survey asked employees 'What is your preferred language?' Overall, 28% of staff expressed a preference for Welsh (10% for Welsh only, 18% for both Welsh and English).

Section 1: the 2011 Census

Welsh language skills

The 2011 Census estimates that in Conwy County Borough there are 30,600 people aged 3 or over who are able to speak Welsh. This is 27.4% of the population. For Wales as a whole only 19% of the population are able to speak Welsh.

Table 1.1: knowledge of Welsh, 2011

Source: 2011 Census table KS207WA, ONS

	Conwy CB		Wales
	Number	%	%
All aged 3+	111,724		2,955,841
No knowledge of Welsh	67,716	60.6%	73.3%
Understands spoken Welsh only	10,655	9.5%	5.3%
All Welsh speakers	30,600	27.4%	19.0%
Speaks but neither reads nor writes Welsh	4,603	4.1%	2.7%
Speaks and reads but cannot write Welsh	2,706	2.4%	1.5%
Speaks, reads and writes Welsh	23,063	20.6%	14.6%
Other combination of skills	2,981	2.7%	2.5%

Definitions

The 2011 Census question asked 'Can you understand, speak, read or write Welsh?' – answered by ticking one or more of five boxes (one for each category and one for 'None of these') in any combination. This question was only asked in Wales, and results are presented for those aged 3 and over. The Census did not collect information on fluency levels or on frequency of use.

The 2011 Census also looked at reading, writing and understanding skills for the Welsh language. Conwy County Borough was well above the Wales average for all skills.

Age structure

The ability to speak Welsh differs between age groups. The ability to speak Welsh is most prevalent amongst those of school age – overall, 49.2% of 5-15 year olds can speak Welsh in Conwy CB (40.3% in Wales as a whole). There is a significant fall-off in the proportion able to speak Welsh after age 15 however, which suggests that skills obtained during the years of compulsory Welsh language learning at school (up to age 16) may begin to be lost quite quickly.

Those aged 50-69 have the lowest proportions of Welsh speakers within their population (only 20.4% overall), though even in this age group Conwy CB is well above the Wales average (13.7%).

Table 1.2: Welsh speakers by age, 2011

Source: 2011 Census table DC2203WA, ONS

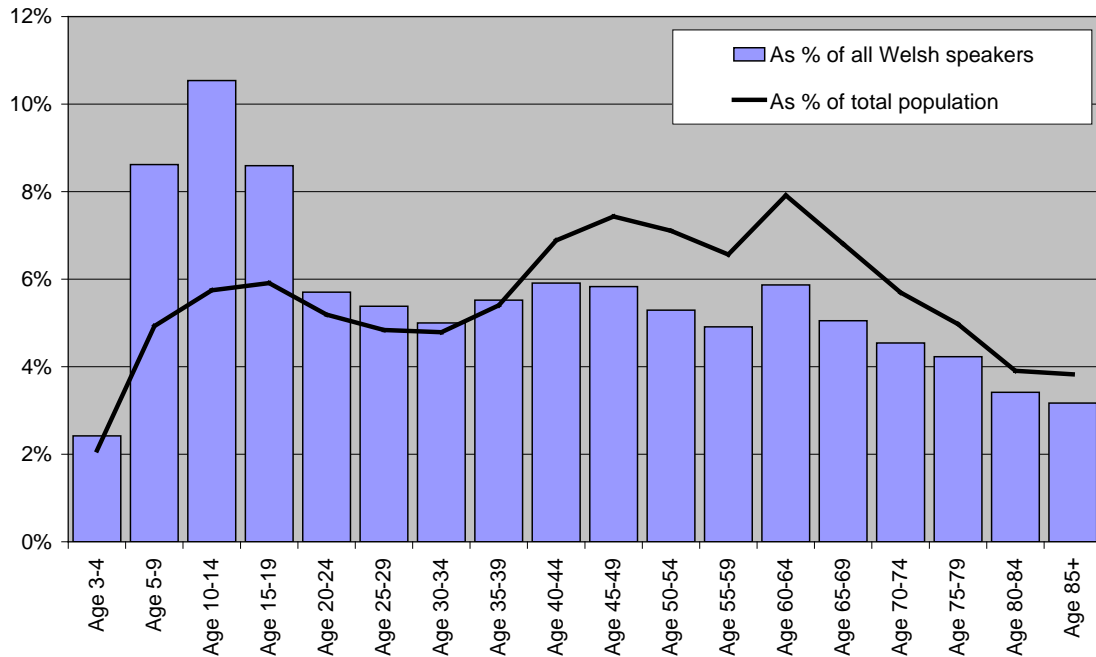
	Conwy CB			Wales		
	Total	Speak Welsh	% Speak Welsh	Total	Speak Welsh	% Speak Welsh
All aged 3+	111,724	30,600	27.4%	2,955,841	562,016	19.0%
Age 3-4	2,335	740	31.7%	70,686	16,495	23.3%
Age 5-7	3,351	1,547	46.2%	99,429	36,985	37.2%
Age 8-9	2,155	1,090	50.6%	63,650	25,315	39.8%
Age 10-14	6,418	3,225	50.2%	177,748	75,093	42.2%
Age 15	1,363	677	49.7%	37,168	14,862	40.0%
Age 16-17	2,849	1,182	41.5%	77,111	25,551	33.1%
Age 18-19	2,390	771	32.3%	84,841	18,100	21.3%
Age 20-24	5,798	1,745	30.1%	211,924	37,258	17.6%
Age 25-29	5,404	1,647	30.5%	185,728	30,425	16.4%
Age 30-34	5,350	1,530	28.6%	174,694	26,733	15.3%
Age 35-39	6,036	1,689	28.0%	183,045	27,297	14.9%
Age 40-44	7,693	1,809	23.5%	213,155	29,029	13.6%
Age 45-49	8,304	1,784	21.5%	220,711	28,724	13.0%
Age 50-54	7,939	1,620	20.4%	201,599	26,530	13.2%
Age 55-59	7,333	1,503	20.5%	186,923	25,097	13.4%
Age 60-64	8,844	1,796	20.3%	204,885	27,590	13.5%
Age 65-69	7,604	1,546	20.3%	166,007	24,705	14.9%
Age 70-74	6,362	1,390	21.8%	134,543	20,407	15.2%
Age 75-79	5,558	1,294	23.3%	108,202	17,542	16.2%
Age 80-84	4,363	1,045	24.0%	79,232	14,025	17.7%
Age 85+	4,275	970	22.7%	74,560	14,253	19.1%

Because of this, the age structure of the Welsh speaking population is very much skewed towards the younger age groups when compared with the population as a whole. There are more than twice as many Welsh speakers in the school age groups as would be expected if the numbers of Welsh speakers were evenly spread across the population.

The chart on the next page shows each 5 year age group as a proportion of the total population and as a proportion of total Welsh speakers. Overall, the age profile of non-Welsh speakers is older than that for Welsh speakers.

Chart 1.1: age structure of Welsh speakers compared to age structure of the population as a whole

Source: 2011 Census table DC2203WA, ONS



Geographic spread

The geographic spread of Welsh speakers is not even. In general, the incidence of Welsh speakers increases towards the west, and as one travels inland from the more highly populated coastal strip.

Table 1.3: electoral divisions with highest and lowest proportion of Welsh speakers, 2011

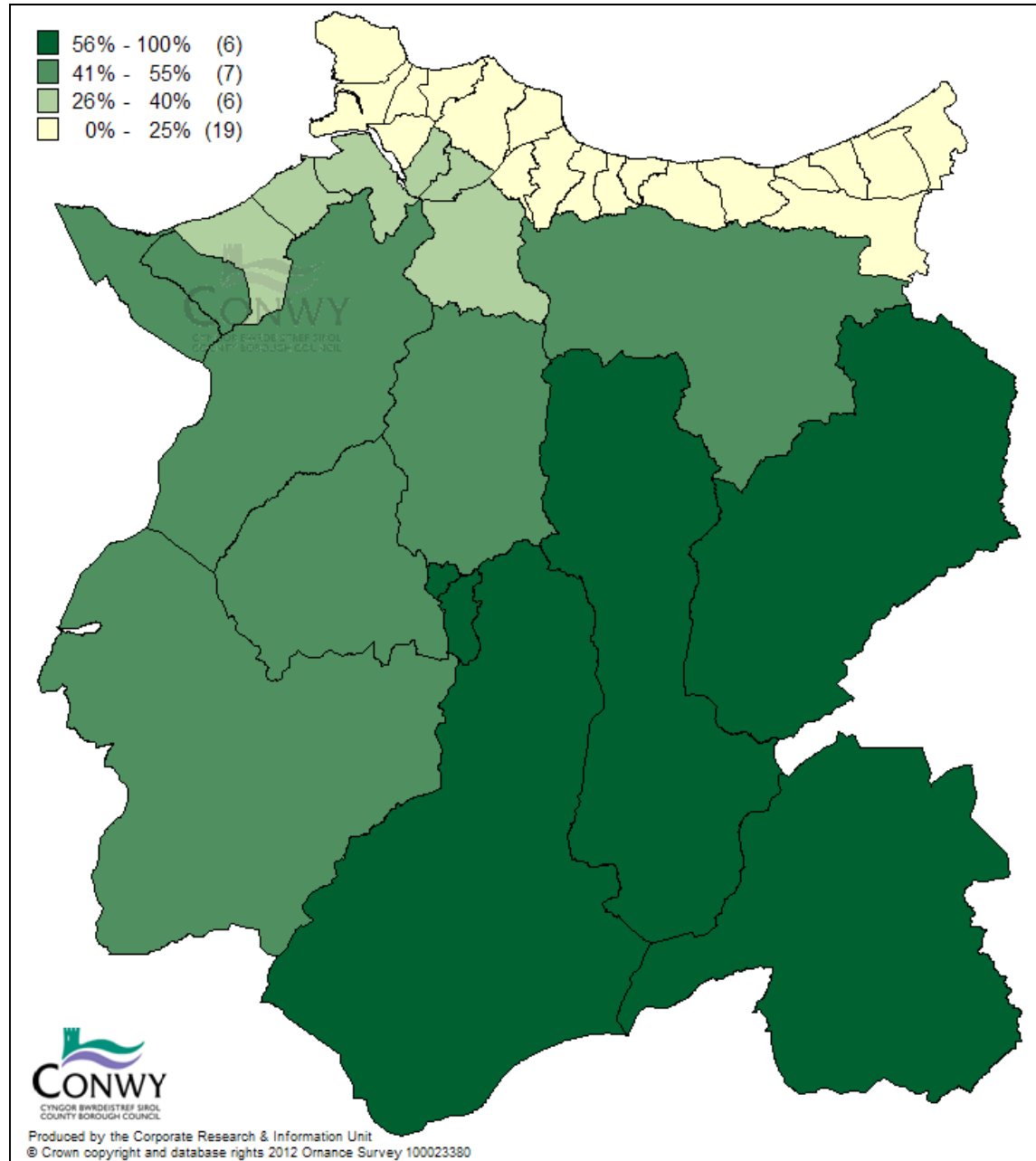
Source: 2011 Census table KS207WA, ONS

Uwchaled	70.8%
Llangernyw	65.8%
Gower	63.5%
Llansannan	63.0%
Uwch Conwy	60.7%
Rhiw	16.7%
Gogarth	16.0%
Abergele Pensarn	11.6%
Kinmel Bay	11.5%
Towyn	10.8%

The ability to speak Welsh is at a peak in the rural southern electoral division (ward) of Uwchaled (71% Welsh speaking), and at its lowest in the eastern coastal community of Towyn & Kinmel Bay (less than 12% Welsh speaking).

Map 1.1: proportion of Welsh speakers in Conwy County Borough, by electoral division (ward)

Source: 2011 Census table KS207WA, ONS



However, though the proportions of Welsh speakers are highest in the rural electoral divisions, numerically there are many more Welsh speakers in the urban areas than in the more sparsely populated rural areas. Rhos-on-Sea has over 1,350 Welsh speakers though that makes up only 18.4% of the population. Uwchaled, which is proportionately the most Welsh speaking electoral division has about 400 fewer

Welsh speaking residents. Towyn has the lowest number of Welsh speakers at only 250.

Other electoral divisions with over 1,000 Welsh speaking residents are Crwst (Llanrwst), Llansannan, Conwy, Tudno and Penrhyn (Llandudno), Marl (Llandudno Junction), Rhiw (Colwyn Bay) and Gele (Abergele).

Tables showing Welsh language skills at electoral division and community council area level are available in appendices 1.1 and 1.2.

Change over time

Between 2001 and 2011 the number of Welsh speakers in the County Borough fell from 31,050 to 30,600 – a decrease of 450 or -6.2%. As a proportion this was a fall from 29.2% of the population aged 3+ in 2001 to 27.4% in 2011. This decline has been continuous over the past four Censuses.

Wales as a whole saw an increase in the proportion of Welsh speakers between 1991 and 2001, following the introduction of the Welsh language Act 1993 which gave equal status to Welsh and English, and the introduction of compulsory teaching of Welsh in all schools from 1999. However, no such increase was seen in Conwy County Borough in 2001.

Chart 1.2: change in the proportion of Welsh speakers over time

Source: Census of Population, ONS

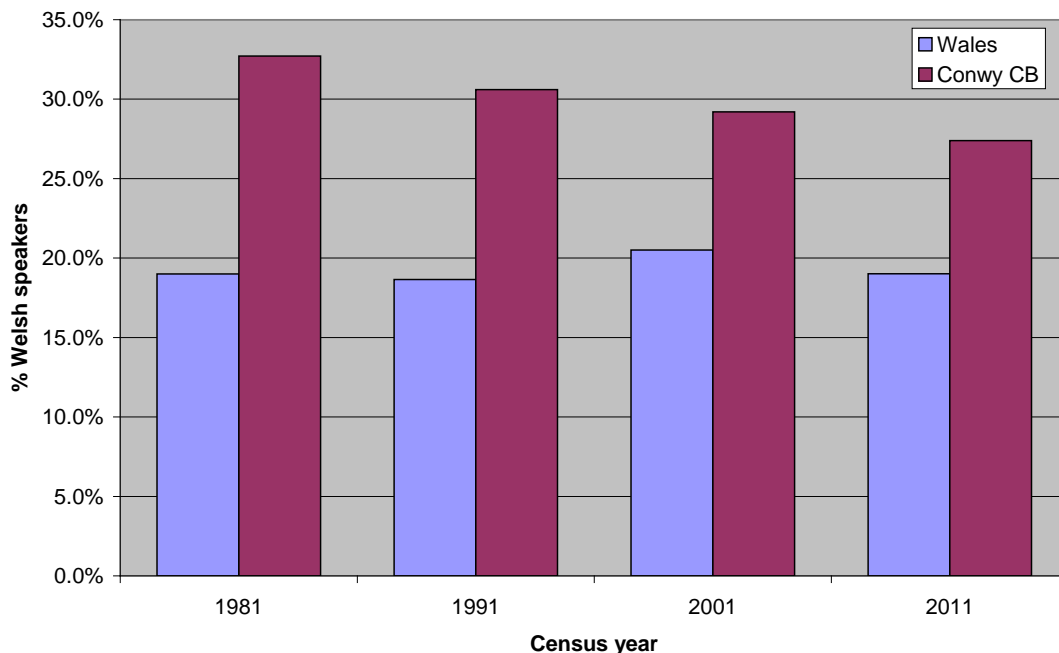


Table 1.4: Welsh speakers 1981 to 2011

Source: 2001 and 2011 Censuses, ONS

	Conwy County Borough		Wales	
	Number	%	Number	%
2011 Census	30,600	27.4%	562,016	19.0%
2001 Census	31,042	29.2%	575,640	20.5%
1991 Census	31,431	30.6%	508,098	18.7%
1981 Census	30,276	32.7%	508,207	19.0%

Not all areas in Conwy CB have seen a persistent decline in Welsh speaking abilities however. Between 2001 and 2011 four electoral divisions saw an overall increase in Welsh speakers within their population in terms of both numbers and proportion – Penrhyn (Llandudno), Kinmel Bay, Llandrillo yn Rhos and Eglwysbach. A further 11 electoral divisions saw a numeric increase in the number of Welsh speakers between 2001 and 2011 even though there was a proportionate decline. Llansanfraidd (Glan Conwy) saw a slight proportional increase, but a numeric decrease.

Table 1.5: electoral divisions where Welsh speaking has increased between 2001 and 2011

Source: 2001 and 2011 Censuses, ONS

	Numeric change	Proportional change
Llandrillo yn Rhos	114	0.4%
Kinmel Bay	72	0.4%
Penrhyn	70	0.9%
Rhiw	70	-1.2%
Betws yn Rhos	65	-1.0%
Pant-yr-afon/Penmaenan	63	-4.1%
Crwst	49	-3.7%
Eglwysbach	32	0.1%
Deganwy	31	-0.7%
Gele	19	-0.6%
Llangernyw	18	-3.5%
Marl	16	-0.6%
Llansannan	15	-2.6%
Gower	13	-2.9%
Towyn	11	-0.2%
Llansanffraid	-26	0.2%

Tables showing change over time at electoral division and community council area level are available in appendices 2.1 and 2.2.

Comparative areas

In comparison to other unitary authorities in Wales, Conwy County Borough has the fifth highest proportion of Welsh speakers in its population, behind Gwynedd, Isle of Anglesey, Ceredigion and Carmarthen.

However, though the County Borough has well above the national average proportion of Welsh speakers, it is well below the rates in our neighbouring authorities to the West – Gwynedd is 65.4% Welsh speaking and Anglesey's proportion is 57.2%.

Table 1.6: Welsh speakers in North Wales unitary authorities, 2011

Source: 2011 Census table KS207WA, ONS

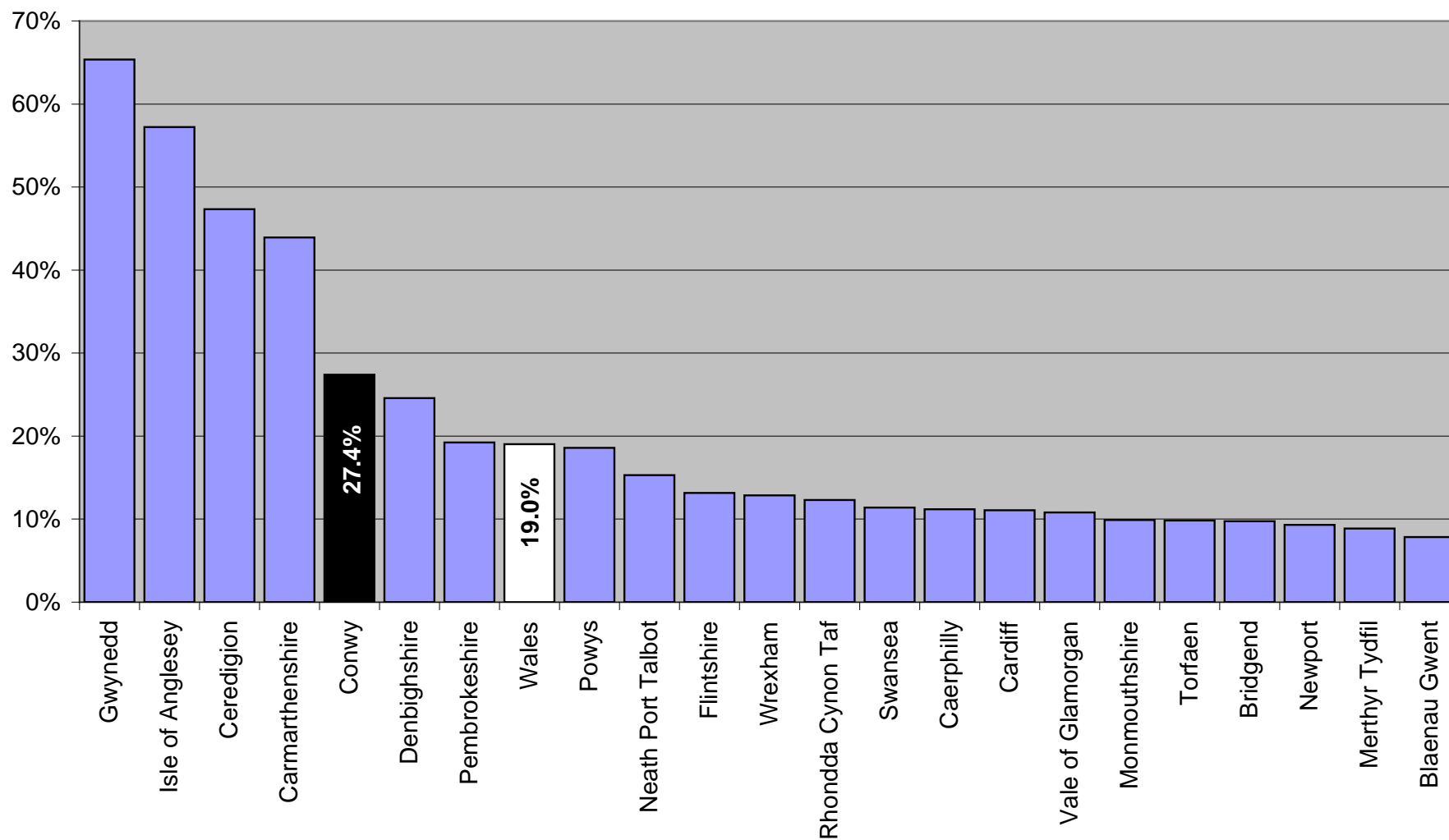
	Total population aged 3+	Speak Welsh	
		Number	%
Wales	2,955,841	562,016	19.0%
Isle of Anglesey	67,403	38,568	57.2%
Gwynedd	117,789	77,000	65.4%
Conwy	111,724	30,600	27.4%
Denbighshire	90,527	22,236	24.6%
Flintshire	146,940	19,343	13.2%
Wrexham	129,425	16,659	12.9%

Numerically, the County Borough ranks sixth, behind Carmarthenshire, Gwynedd, Isle of Anglesey, Cardiff and Ceredigion.

Conwy County Borough's 30,600 Welsh speakers make up 5.4% of the Welsh speaking population of Wales. (Our population as a whole makes up 3.8% of the total Welsh population). This proportion hasn't changed significantly since 2001, but is a decline on 1981 and 1991.

Chart 1.3: Welsh speakers in Welsh unitary authorities, 2011

Source: 2011 Census table KS207WA, ONS



Section 2: Welsh language in schools

Only 12.2% of pupils in Conwy County Borough Council schools are fluent in Welsh. 16.4% of pupils are in Welsh medium schools, which is higher than the proportion of fluent Welsh speakers, and a further 21.7% of pupils are educated in schools which provide significant schooling through the medium of Welsh. Nearly two thirds of all pupils are in English medium schools.

These figures are for school pupils educated in Conwy County Borough by the Local Education Authority and so do not include children resident in the County who are educated outside of Conwy CB, or children in private or independent schools. The figures also include some children who live outside the area but are educated in Conwy CB's Local Education Authority schools.

Table 2.1: Welsh speaking pupils in Conwy County Borough, 2013

Source: Pupil Level Annual School Census

	All schools		Primary		Secondary	
	Number	%	Number	%	Number	%
All pupils	15,903		8,694		7,209	
Speak Welsh fluently	1,938	12.2%	930	10.7%	1,008	14.0%
Speak Welsh but not fluently	6,414	40.3%	2,406	27.7%	4,008	55.6%
Cannot speak Welsh at all	7,384	46.4%	5,307	61.0%	2,077	28.8%

Table 2.2: pupils by school type in Conwy County Borough, 2013

Source: Pupil Level Annual School Census

	Number	%
All pupils	15,903	
Pupils in Welsh medium schools	2,602	16.4%
Pupils in bilingual schools	692	4.4%
Pupils in dual stream schools	412	2.6%
Pupils in English schools (with significant Welsh)	2,343	14.7%
Pupils in English medium schools	9,854	62.0%

Definitions

Welsh medium school: Welsh is the day to day language of the school.

Bilingual school: at least 80% of subjects, except English and Welsh are taught through Welsh medium and also English medium.

Dual stream school: both Welsh and English are used day to day, depending on curricular provision.

English schools (with significant Welsh): both languages are used in teaching, depending on context.

English medium school: English is day to day language of the school (Welsh is also used)

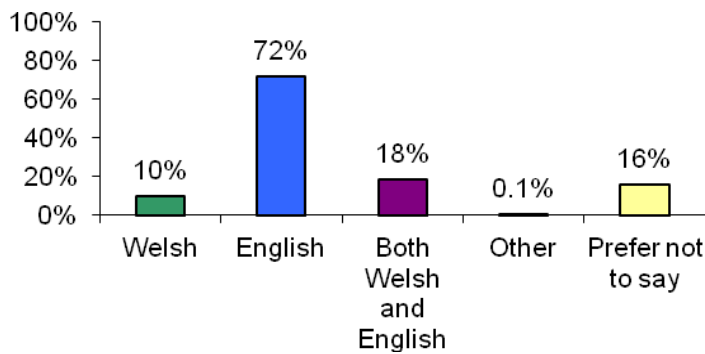
Section 3: language preference of Council staff

Conwy County Borough Council's 2013 staff survey asked employees 'What is your preferred language?'

Overall, 28% of staff expressed a preference for Welsh (10% for Welsh only, 18% for both Welsh and English).

Table and chart 3.1: language preferences for Conwy County Borough Council staff

Source: 2013 Staff survey, Conwy County Borough Council



Language Preference	Count	Percentage
Welsh	158	10%
English	1148	72%
Both Welsh and English	296	18%
Other	2	0.1%
Prefer not to say	299	16%

Appendix 1.1a – Welsh language skills by electoral division (ward), 2011

Source: 2011 Census table KS207WA, ONS

	All people aged 3 and over	No skills in Welsh	Understands spoken Welsh only*	Can speak Welsh	Can speak, read & write Welsh	Other skill combination
Wales	2,955,841	2,167,987	157,792	562,016	430,717	199,345
Conwy County Borough	111,724	67,716	10,655	30,600	23,063	10,290
Abergele Pensarn	2,380	1,913	163	275	183	121
Betws-y-Coed	1,199	440	134	603	512	113
Betws yn Rhos	2,064	902	185	938	750	227
Bryn	1,761	690	238	793	571	262
Caerhun	1,967	878	220	824	657	212
Capelulo	1,434	704	209	478	335	186
Colwyn	4,407	2,913	436	913	670	388
Conwy	3,954	2,134	572	1,134	806	442
Craig-y-Don	3,342	2,340	297	626	459	246
Crwst	2,043	533	246	1,217	943	321
Deganwy	3,844	2,513	367	875	640	324
Eglwysbach	1,509	559	112	819	678	160
Eirias	3,437	2,149	383	806	593	312
Gele	4,498	3,047	328	1,020	777	346
Glyn	4,156	2,852	379	817	584	341
Gogarth	3,642	2,655	328	581	429	230
Gower	1,144	239	151	726	585	169
Kinmel Bay	5,872	4,797	295	676	434	346
Llanddulas	1,504	1,010	146	308	212	136
Llandrillo yn Rhos	7,422	5,290	596	1,366	965	571
Llangernyw	1,388	389	76	913	796	127
Llansanffraid	2,139	1,067	252	765	567	253
Llansannan	1,870	553	122	1,179	1,057	138
Llysaen	2,621	1,734	253	552	383	251
Marl	3,741	2,099	403	1,114	817	422
Mochdre	1,847	1,206	177	416	293	171
Mostyn	3,517	2,396	381	646	442	298
Pandy	1,762	660	210	853	604	288
Pant-yr-afon/Penmaenan	2,776	1,365	377	947	683	351
Penrhyn	4,770	3,078	469	1,092	807	416
Pensarn	2,735	1,466	390	778	547	332
Pentre Mawr	3,401	2,316	275	719	532	278
Rhiw	6,449	4,658	532	1,080	766	493
Towyn	2,322	1,923	116	251	160	123
Trefriw	1,188	458	154	542	393	183
Tudno	4,840	3,037	517	1,134	796	490
Uwch Conwy	1,422	433	105	863	760	124
Uwchaled	1,357	320	61	961	877	99

* 'Understands spoken Welsh only' means that the person understands spoken Welsh but has no other skills in the language.

Appendix 1.1b – Welsh language skills by electoral division (ward), 2011

Source: 2011 Census table KS207WA, ONS

	All people aged 3 and over	No skills in Welsh	Understands spoken Welsh only*	Can speak Welsh	Can speak, read & write Welsh	Other skill combination
Wales	2,955,841	73.3%	5.3%	19.0%	14.6%	6.7%
Conwy County Borough	111,724	60.6%	9.5%	27.4%	20.6%	9.2%
Abergele Pensarn	2,380	80.4%	6.8%	11.6%	7.7%	5.1%
Betws-y-Coed	1,199	36.7%	11.2%	50.3%	42.7%	9.4%
Betws yn Rhos	2,064	43.7%	9.0%	45.4%	36.3%	11.0%
Bryn	1,761	39.2%	13.5%	45.0%	32.4%	14.9%
Caerhun	1,967	44.6%	11.2%	41.9%	33.4%	10.8%
Capelulo	1,434	49.1%	14.6%	33.3%	23.4%	13.0%
Colwyn	4,407	66.1%	9.9%	20.7%	15.2%	8.8%
Conwy	3,954	54.0%	14.5%	28.7%	20.4%	11.2%
Craig-y-Don	3,342	70.0%	8.9%	18.7%	13.7%	7.4%
Crwst	2,043	26.1%	12.0%	59.6%	46.2%	15.7%
Deganwy	3,844	65.4%	9.5%	22.8%	16.6%	8.4%
Eglwysbach	1,509	37.0%	7.4%	54.3%	44.9%	10.6%
Eirias	3,437	62.5%	11.1%	23.5%	17.3%	9.1%
Gele	4,498	67.7%	7.3%	22.7%	17.3%	7.7%
Glyn	4,156	68.6%	9.1%	19.7%	14.1%	8.2%
Gogarth	3,642	72.9%	9.0%	16.0%	11.8%	6.3%
Gower	1,144	20.9%	13.2%	63.5%	51.1%	14.8%
Kinmel Bay	5,872	81.7%	5.0%	11.5%	7.4%	5.9%
Llanddulas	1,504	67.2%	9.7%	20.5%	14.1%	9.0%
Llandrillo yn Rhos	7,422	71.3%	8.0%	18.4%	13.0%	7.7%
Llangernyw	1,388	28.0%	5.5%	65.8%	57.3%	9.1%
Llansanffraid	2,139	49.9%	11.8%	35.8%	26.5%	11.8%
Llansannan	1,870	29.6%	6.5%	63.0%	56.5%	7.4%
Llysfaen	2,621	66.2%	9.7%	21.1%	14.6%	9.6%
Marl	3,741	56.1%	10.8%	29.8%	21.8%	11.3%
Mochdre	1,847	65.3%	9.6%	22.5%	15.9%	9.3%
Mostyn	3,517	68.1%	10.8%	18.4%	12.6%	8.5%
Pandy	1,762	37.5%	11.9%	48.4%	34.3%	16.3%
Pant-yr-afon/Penmaenan	2,776	49.2%	13.6%	34.1%	24.6%	12.6%
Penrhyn	4,770	64.5%	9.8%	22.9%	16.9%	8.7%
Pensarn	2,735	53.6%	14.3%	28.4%	20.0%	12.1%
Pentre Mawr	3,401	68.1%	8.1%	21.1%	15.6%	8.2%
Rhiw	6,449	72.2%	8.2%	16.7%	11.9%	7.6%
Towyn	2,322	82.8%	5.0%	10.8%	6.9%	5.3%
Trefriw	1,188	38.6%	13.0%	45.6%	33.1%	15.4%
Tudno	4,840	62.7%	10.7%	23.4%	16.4%	10.1%
Uwch Conwy	1,422	30.5%	7.4%	60.7%	53.4%	8.7%
Uwchaed	1,357	23.6%	4.5%	70.8%	64.6%	7.3%

* 'Understands spoken Welsh only' means that the person understands spoken Welsh but has no other skills in the language.

Appendix 1.2a – Welsh language skills by community council area, 2011

Source: 2011 Census table KS207WA, ONS

	All people aged 3 and over	No skills in Welsh	Understands spoken Welsh only*	Can speak Welsh	Can speak, read & write Welsh	Other skill combination
Wales	2,955,841	2,167,987	157,792	562,016	430,717	199,345
Conwy County Borough	111,724	67,716	10,655	30,600	23,063	10,290
Abergele	10,279	7,276	766	2,014	1,492	745
Betws-y-Coed	542	214	69	252	199	60
Betws yn Rhos	1,020	447	83	473	391	99
Bro Garmon	635	202	49	372	332	52
Bro Machno	596	197	50	340	292	57
Caerhun	1,263	548	124	563	459	132
Capel Curig	198	59	22	113	98	19
Cerrigydrudion	711	123	32	549	508	48
Colwyn Bay	10,605	7,510	911	1,897	1,350	834
Conwy	14,274	8,212	1,732	3,901	2,810	1,520
Dolgarrog	427	142	70	200	132	83
Dolwyddelan	459	167	43	238	215	34
Eglwysbach	914	388	68	448	361	97
Henryd	704	330	96	261	198	80
Llanddoged and Maenan	595	171	44	371	317	63
Llanddulas & Rhyd-y-Foel	1,504	1,010	146	308	212	136
Llandudno	20,111	13,506	1,992	4,079	2,933	1,680
Llanfairfechan	3,523	1,350	448	1,646	1,175	550
Llanfairtalhaearn	1,044	455	102	465	359	128
Llanfihangel Glyn Myfyr	184	44	9	128	120	11
Llangernyw	1,043	303	58	672	585	97
Llangwm	462	153	20	284	249	40
Llanefydd	571	189	30	348	308	44
Llanrwst	3,187	772	397	1,943	1,528	490
Llansanffraid Glan Conwy	2,139	1,067	252	765	567	253
Llansannan	1,299	364	92	831	749	94
Llysfaen	2,621	1,734	253	552	383	251
Mochdre	1,847	1,206	177	416	293	171
Old Colwyn	7,844	5,062	819	1,719	1,263	700
Penmaenmawr	4,210	2,069	586	1,425	1,018	537
Pentrefoelas	345	86	18	241	211	30
Rhos-on-Sea	7,422	5,290	596	1,366	965	571
Towyn and Kinmel Bay	8,194	6,720	411	927	594	469
Trefriw	761	316	84	342	261	100
Ysbyty Ifan	191	34	6	151	136	15

* 'Understands spoken Welsh only' means that the person understands spoken Welsh but has no other skills in the language.

Appendix 1.2b – Welsh language skills by community council area, 2011

Source: 2011 Census table KS207WA, ONS

	All people aged 3 and over	No skills in Welsh	Understands spoken Welsh only*	Can speak Welsh	Can speak, read & write Welsh	Other skill combination
Wales	2,955,841	73.3%	5.3%	19.0%	14.6%	6.7%
Conwy County Borough	111,724	60.6%	9.5%	27.4%	20.6%	9.2%
Abergele	10,279	70.8%	7.5%	19.6%	14.5%	7.2%
Betws-y-Coed	542	39.5%	12.7%	46.5%	36.7%	11.1%
Betws yn Rhos	1,020	43.8%	8.1%	46.4%	38.3%	9.7%
Bro Garmon	635	31.8%	7.7%	58.6%	52.3%	8.2%
Bro Machno	596	33.1%	8.4%	57.0%	49.0%	9.6%
Caerhun	1,263	43.4%	9.8%	44.6%	36.3%	10.5%
Capel Curig	198	29.8%	11.1%	57.1%	49.5%	9.6%
Cerrigydrudion	711	17.3%	4.5%	77.2%	71.4%	6.8%
Colwyn Bay	10,605	70.8%	8.6%	17.9%	12.7%	7.9%
Conwy	14,274	57.5%	12.1%	27.3%	19.7%	10.6%
Dolgarrog	427	33.3%	16.4%	46.8%	30.9%	19.4%
Dolwyddelan	459	36.4%	9.4%	51.9%	46.8%	7.4%
Eglwysbach	914	42.5%	7.4%	49.0%	39.5%	10.6%
Henryd	704	46.9%	13.6%	37.1%	28.1%	11.4%
Llanddoged and Maenan	595	28.7%	7.4%	62.4%	53.3%	10.6%
Llanddulas & Rhyd-y-Foel	1,504	67.2%	9.7%	20.5%	14.1%	9.0%
Llandudno	20,111	67.2%	9.9%	20.3%	14.6%	8.4%
Llanfairfechan	3,523	38.3%	12.7%	46.7%	33.4%	15.6%
Llanfairtalhaearn	1,044	43.6%	9.8%	44.5%	34.4%	12.3%
Llanfihangel Glyn Myfyr	184	23.9%	4.9%	69.6%	65.2%	6.0%
Llangernyw	1,043	29.1%	5.6%	64.4%	56.1%	9.3%
Llangwm	462	33.1%	4.3%	61.5%	53.9%	8.7%
Llanefydd	571	33.1%	5.3%	60.9%	53.9%	7.7%
Llanrwst	3,187	24.2%	12.5%	61.0%	47.9%	15.4%
Llansanffraid Glan Conwy	2,139	49.9%	11.8%	35.8%	26.5%	11.8%
Llansannan	1,299	28.0%	7.1%	64.0%	57.7%	7.2%
Llysfaen	2,621	66.2%	9.7%	21.1%	14.6%	9.6%
Mochdre	1,847	65.3%	9.6%	22.5%	15.9%	9.3%
Old Colwyn	7,844	64.5%	10.4%	21.9%	16.1%	8.9%
Penmaenmawr	4,210	49.1%	13.9%	33.8%	24.2%	12.8%
Pentrefoelas	345	24.9%	5.2%	69.9%	61.2%	8.7%
Rhos-on-Sea	7,422	71.3%	8.0%	18.4%	13.0%	7.7%
Towyn and Kinmel Bay	8,194	82.0%	5.0%	11.3%	7.2%	5.7%
Trefriw	761	41.5%	11.0%	44.9%	34.3%	13.1%
Ysbyty Ifan	191	17.8%	3.1%	79.1%	71.2%	7.9%

* 'Understands spoken Welsh only' means that the person understands spoken Welsh but has no other skills in the language.

Appendix 2.1 – change in proportion of Welsh speakers 2001-2011, by electoral division

Source: 2001 and 2011 Censuses, ONS

	2001		2011		Change 2001-2011	
	Number	%	Number	%	Number	%
Wales	582,368	20.8%	562,016	19.0%	-20,352	-1.7%
Conwy County Borough	31,042	29.2%	30,600	27.4%	-442	-1.8%
Abergele Pensarn	302	14.4%	275	11.6%	-27	-2.8%
Betws-y-Coed	648	56.1%	603	50.3%	-45	-5.8%
Betws yn Rhos	873	46.4%	938	45.4%	65	-1.0%
Bryn	880	45.8%	793	45.0%	-87	-0.7%
Caerhun	824	44.8%	824	41.9%	0	-2.9%
Capelulo	529	37.3%	478	33.3%	-51	-4.0%
Colwyn	947	22.9%	913	20.7%	-34	-2.2%
Conwy	1,322	33.4%	1,134	28.7%	-188	-4.7%
Craig-y-Don	701	21.1%	626	18.7%	-75	-2.3%
Crwst	1,168	63.3%	1,217	59.6%	49	-3.7%
Deganwy	844	23.4%	875	22.8%	31	-0.7%
Eglwysbach	787	54.1%	819	54.3%	32	0.1%
Eirias	846	25.9%	806	23.5%	-40	-2.4%
Gele	1,001	23.3%	1,020	22.7%	19	-0.6%
Glyn	865	22.6%	817	19.7%	-48	-2.9%
Gogarth	649	18.5%	581	16.0%	-68	-2.6%
Gower	713	66.4%	726	63.5%	13	-2.9%
Kinmel Bay	604	11.1%	676	11.5%	72	0.4%
Llanddulas	354	23.2%	308	20.5%	-46	-2.8%
Llandrillo yn Rhos	1,252	18.0%	1,366	18.4%	114	0.4%
Llangernyw	895	69.3%	913	65.8%	18	-3.5%
Llansanffraid	791	35.5%	765	35.8%	-26	0.2%
Llansannan	1,164	65.6%	1,179	63.0%	15	-2.6%
Llysfaen	598	23.8%	552	21.1%	-46	-2.7%
Marl	1,098	30.3%	1,114	29.8%	16	-0.6%
Mochdre	438	24.4%	416	22.5%	-22	-1.9%
Mostyn	690	20.0%	646	18.4%	-44	-1.6%
Pandy	953	55.5%	853	48.4%	-100	-7.1%
Pant-yr-afon/Penmaenan	884	38.2%	947	34.1%	63	-4.1%
Penrhyn	1,022	22.0%	1,092	22.9%	70	0.9%
Pensarn	865	33.3%	778	28.4%	-87	-4.8%
Pentre Mawr	727	21.7%	719	21.1%	-8	-0.6%
Rhiw	1,010	18.0%	1,080	16.7%	70	-1.2%
Towyn	240	11.0%	251	10.8%	11	-0.2%
Trefriw	652	50.3%	542	45.6%	-110	-4.7%
Tudno	1,187	25.8%	1,134	23.4%	-53	-2.4%
Uwch Conwy	970	66.9%	863	60.7%	-107	-6.2%
Uwchaled	1,005	73.6%	961	70.8%	-44	-2.8%

Appendix 2.2 – change in proportion of Welsh speakers 2001-2011, by community council

Source: 2001 and 2011 Censuses, ONS

	2001		2011		Change 2001-2011	
	Number	%	Number	%	Number	%
Wales	582,368	20.8%	562,016	19.0%	-20,352	-1.7%
Conwy County Borough	31,042	29.2%	30,600	27.4%	-442	-1.8%
Abergele	2,008	20.6%	2,014	19.6%	6	-1.0%
Betws-y-Coed	298	57.4%	252	46.5%	-46	-10.9%
Betws yn Rhos	447	48.5%	473	46.4%	26	-2.1%
Bro Garmon	419	66.5%	372	58.6%	-47	-7.9%
Bro Machno	369	61.1%	340	57.0%	-29	-4.1%
Caerhun	556	47.6%	563	44.6%	7	-3.0%
Capel Curig	115	52.8%	113	57.1%	-2	4.3%
Cerrigydrudion	515	76.4%	549	77.2%	34	0.8%
Colwyn Bay	1,836	19.4%	1,897	17.9%	61	-1.5%
Conwy	4,103	29.8%	3,901	27.3%	-202	-2.5%
Dolgarrog	200	49.9%	200	46.8%	0	-3.1%
Dolwyddelan	232	55.4%	238	51.9%	6	-3.5%
Eglwysbach	439	48.9%	448	49.0%	9	0.1%
Henryd	261	39.0%	261	37.1%	0	-1.9%
Llanddoged and Maenan	347	62.3%	371	62.4%	24	0.1%
Llanddulas & Rhyd-y-Foel	352	23.1%	308	20.5%	-44	-2.6%
Llandudno	4,205	21.5%	4,079	20.3%	-126	-1.2%
Llanfairfechan	1,828	50.2%	1,646	46.7%	-182	-3.5%
Llanfairtalhaearn	421	43.9%	465	44.5%	44	0.6%
Llanfihangel Glyn Myfyr	133	69.6%	128	69.6%	-5	0.0%
Llangernyw	639	66.5%	672	64.4%	33	-2.1%
Llangwm	356	71.2%	284	61.5%	-72	-9.7%
Llanefydd	327	61.2%	348	60.9%	21	-0.3%
Llanrwst	1,876	64.3%	1,943	61.0%	67	-3.3%
Llansanffraid Glan Conwy	790	35.5%	765	35.8%	-25	0.3%
Llansannan	834	67.3%	831	64.0%	-3	-3.3%
Llysfaen	591	23.5%	552	21.1%	-39	-2.4%
Mochdre	434	24.2%	416	22.5%	-18	-1.7%
Old Colwyn	1,775	24.0%	1,719	21.9%	-56	-2.1%
Penmaenmawr	1,402	37.5%	1,425	33.8%	23	-3.7%
Pentrefoelas	256	77.3%	241	69.9%	-15	-7.4%
Rhos-on-Sea	1,236	17.8%	1,366	18.4%	130	0.6%
Towyn and Kinmel Bay	814	10.7%	927	11.3%	113	0.6%
Trefriw	448	50.1%	342	44.9%	-106	-5.2%
Ysbyty Ifan	180	83.3%	151	79.1%	-29	-4.2%