

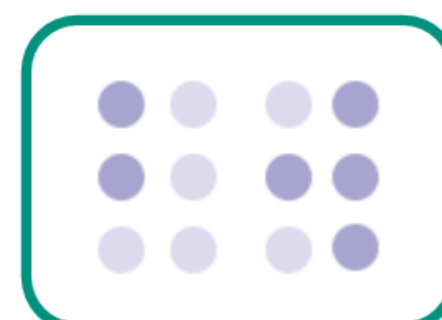
# INVESTING IN YOUR COMMUNITY

## Conwy Council Tax 2020/21



# CONTENTS

What your money is spent on each year	03
How we are funded	04
How we spend the funding	05
How this is invested by our main services	07
How your Council Tax is calculated	10
Reducing your Council Tax bill	12
Contact Us	13



**We are happy to provide this document in large print, audio, braille and British Sign Language.**

# What your money is spent on each year

2020/21

This example is based on a **Band D property council tax** of **£1,343.86** per year.

## Education & Schools



£462.07

## Social Care



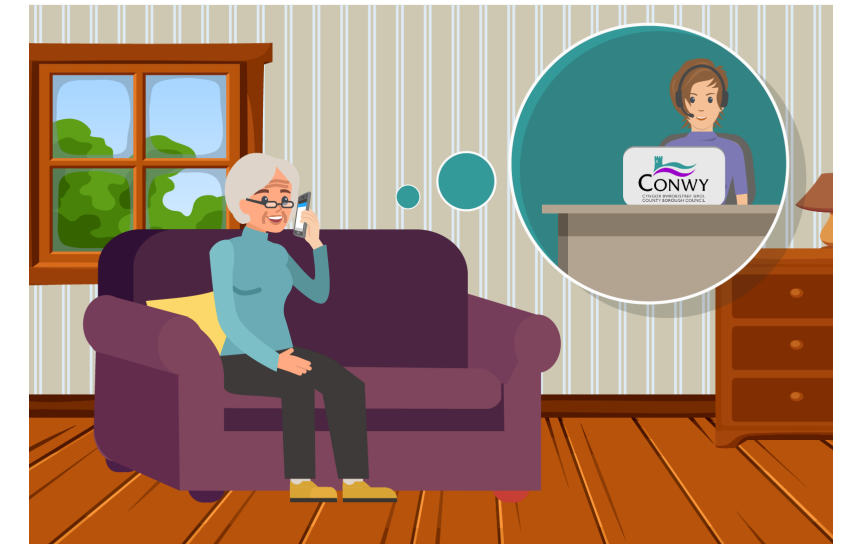
£392.44

## Interest Costs & Asset Repayment



£89.16

## Council Tax Reduction Scheme & Business Rate Relief



£64.05

## Corporate Support Services



£37.66

## Fire Service & National Park payments



£38.16

## Recycling & Waste Collection



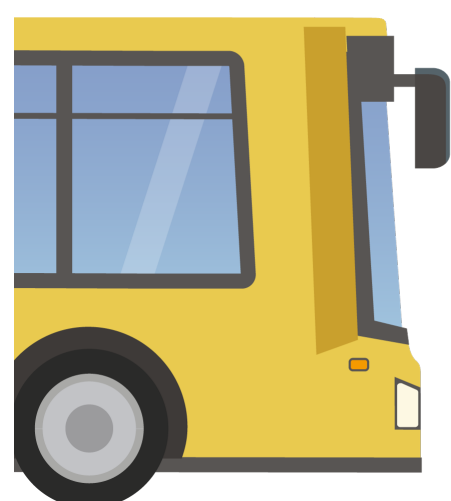
£33.26

## Roads & Infrastructure



£30.21

## School Transport



£30.27

## Public Protection, Licensing & Environmental Health



£18.19

## Modernisation & Corporate Fees



£24.52

## Tourism, Theatres, Conferences & Events



£14.23

## Managing Council Buildings



£12.77

## Democracy



£10.70

## Waste to Energy Site/Disposal



£11.55

## Libraries



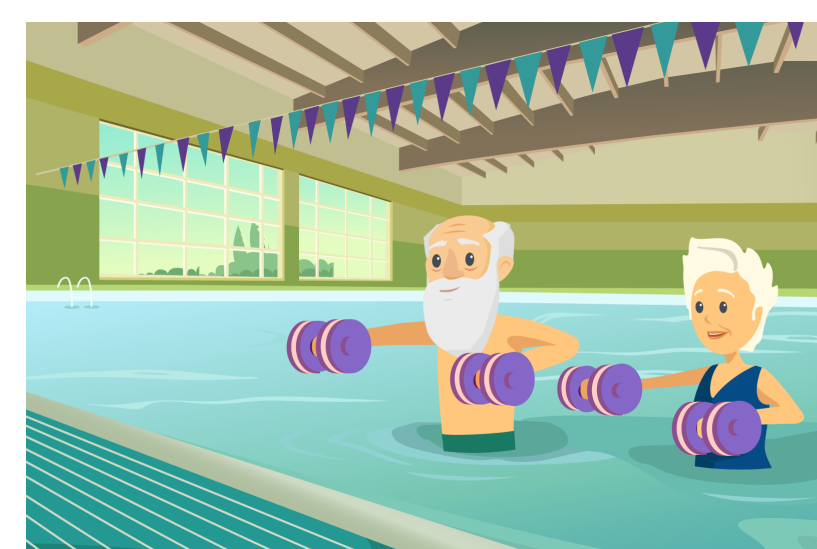
£12.87

## Street Cleaning



£11.13

## Swimming Pools & Leisure Centres



£11.09

## Homelessness Prevention



£10.25

## Supporting Businesses & the Community



£7.78

## Parks & Gardens



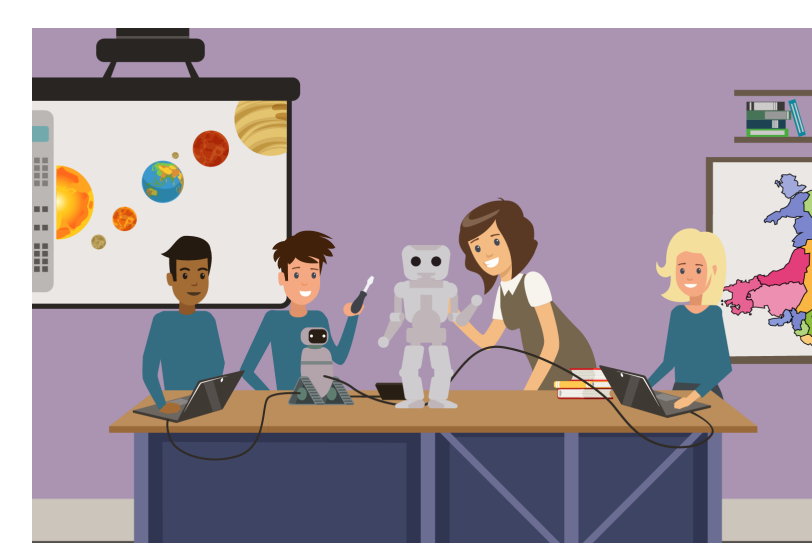
£6.86

## Revenue and Benefits & Financial Assessment Team



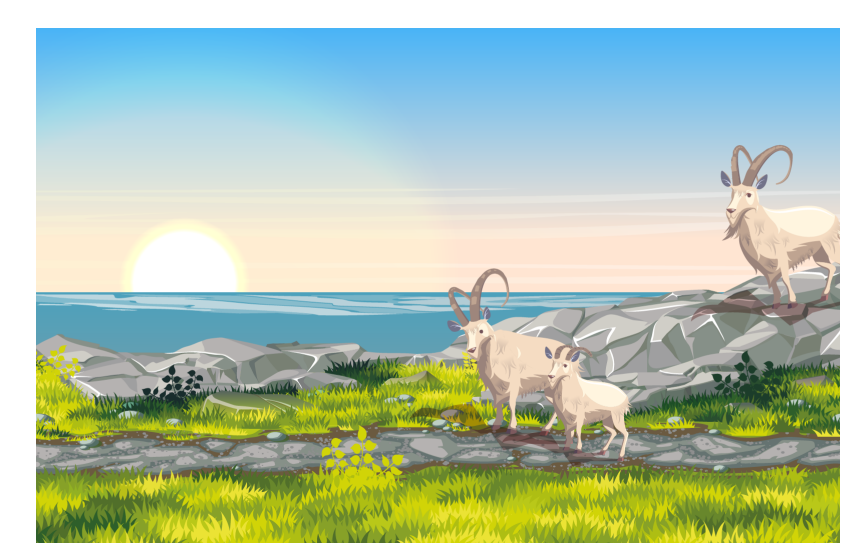
£6.50

## Youth Services



£5.26

## Countryside Management



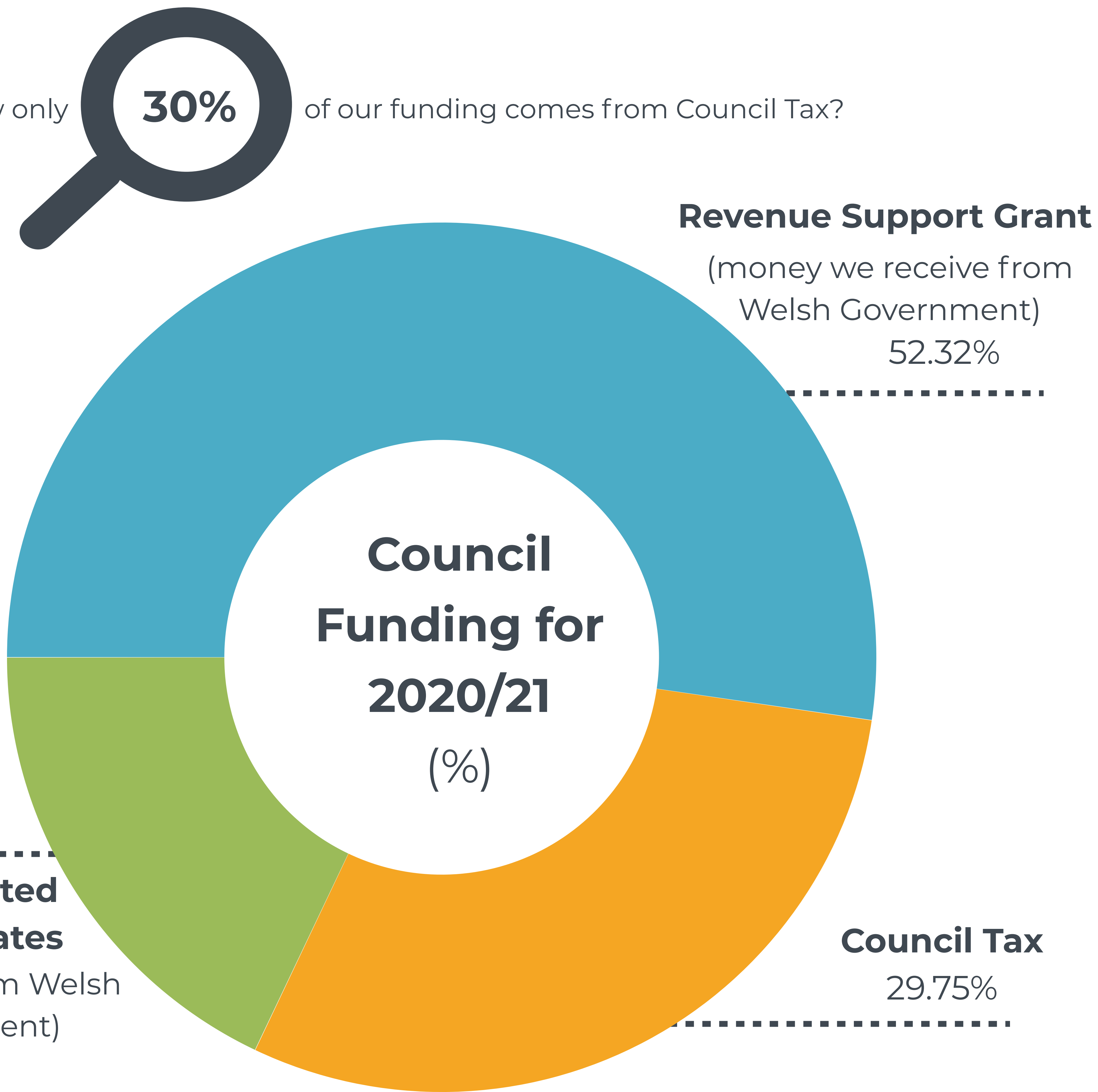
£2.88

# How we are funded

Did you know only

**30%**

of our funding comes from Council Tax?



**Re-distributed Business Rates**

(received from Welsh Government)

17.93%

**Revenue Support Grant**

(money we receive from Welsh Government)

52.32%

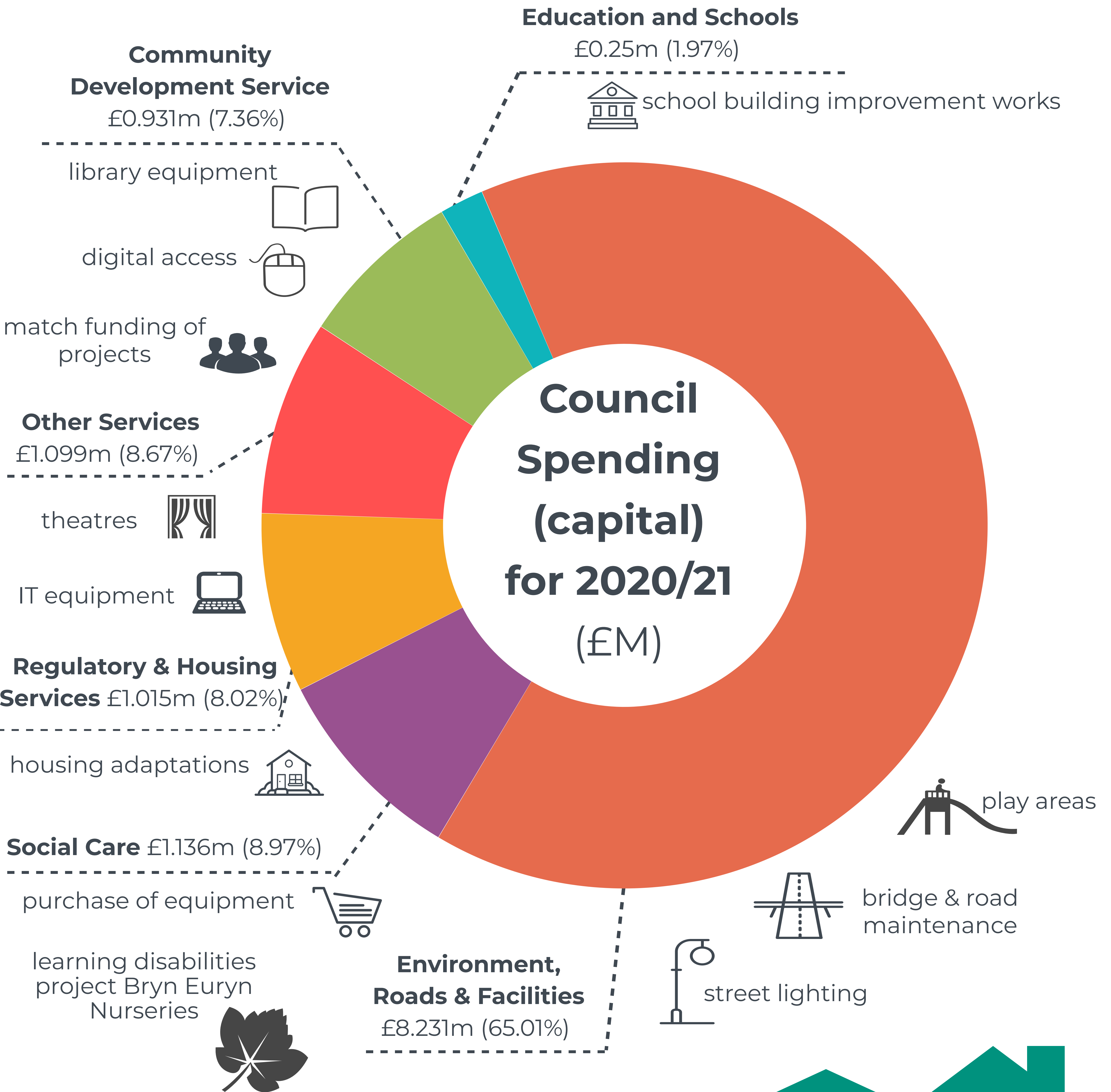
**Council Tax**

29.75%

	£M
Revenue Support Grant	£120.198m
Amount raised from Council Tax Payers	£68.362m
Re-distributed Business Rates	£41.200m
<b>Total</b>	<b>£229.760m</b>

# How we spend the capital funding

For the financial year April 2020 to March 2021 the Council has a **capital budget** of **£12.661m** to invest in the community. Here are some examples -

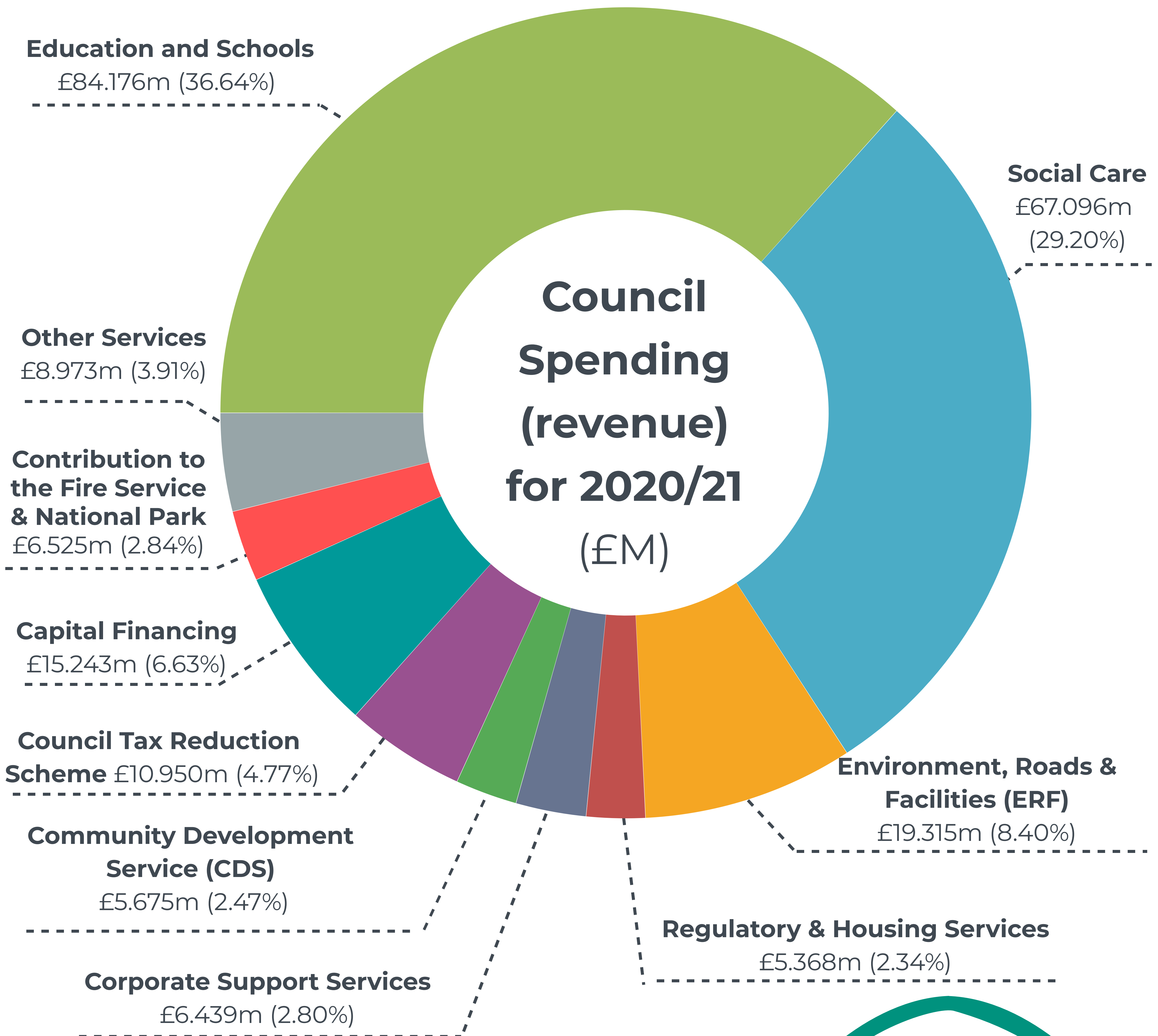


**Capital**  
 This is the money we use on big investments - such as roads, buildings, schools, re-cycling wagons and leisure centres etc.



# How we spend the revenue funding

For the financial year April 2020 to March 2021 the Council has a **revenue budget** of **£229.760m** to invest in the community -

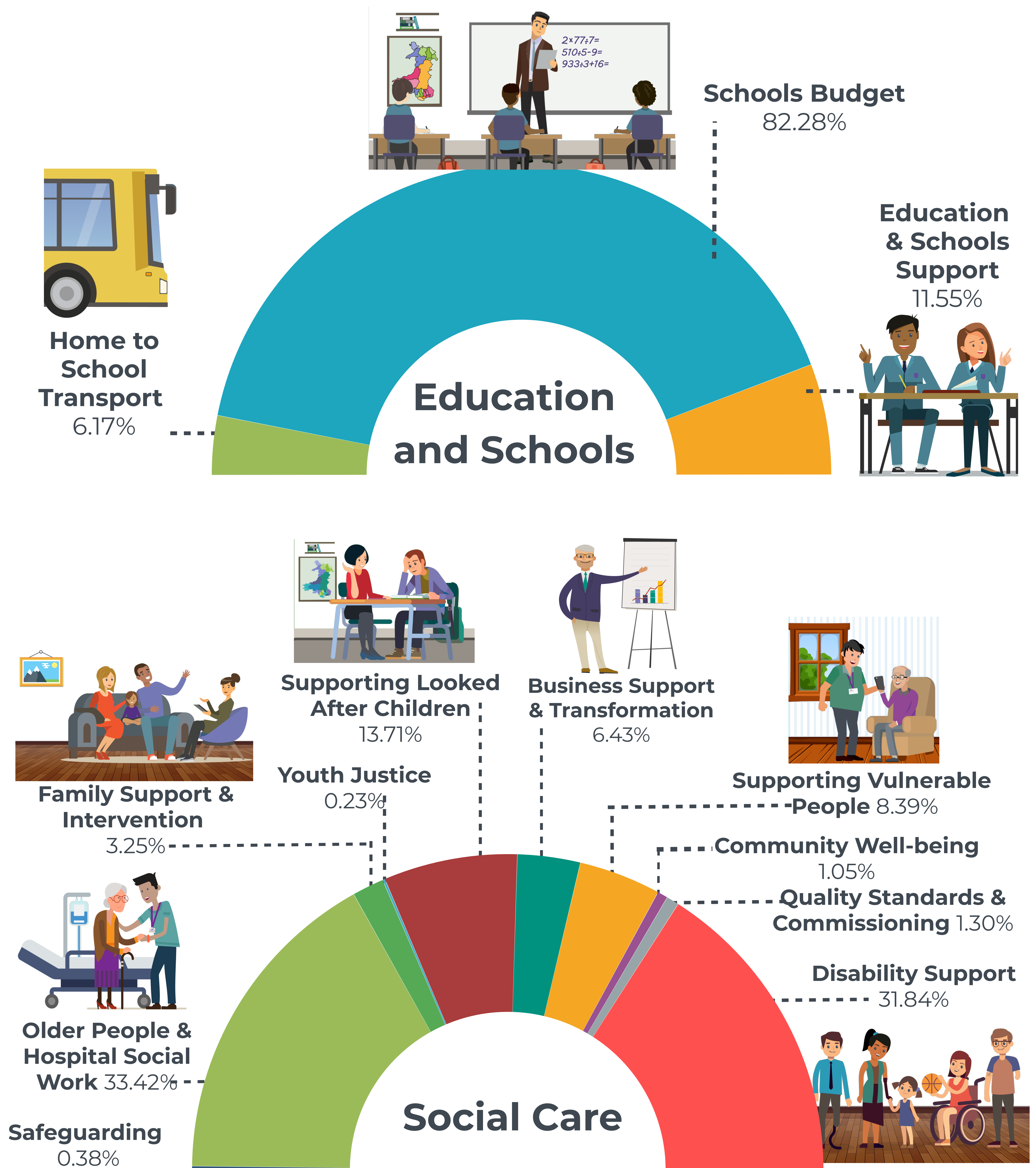


## Revenue

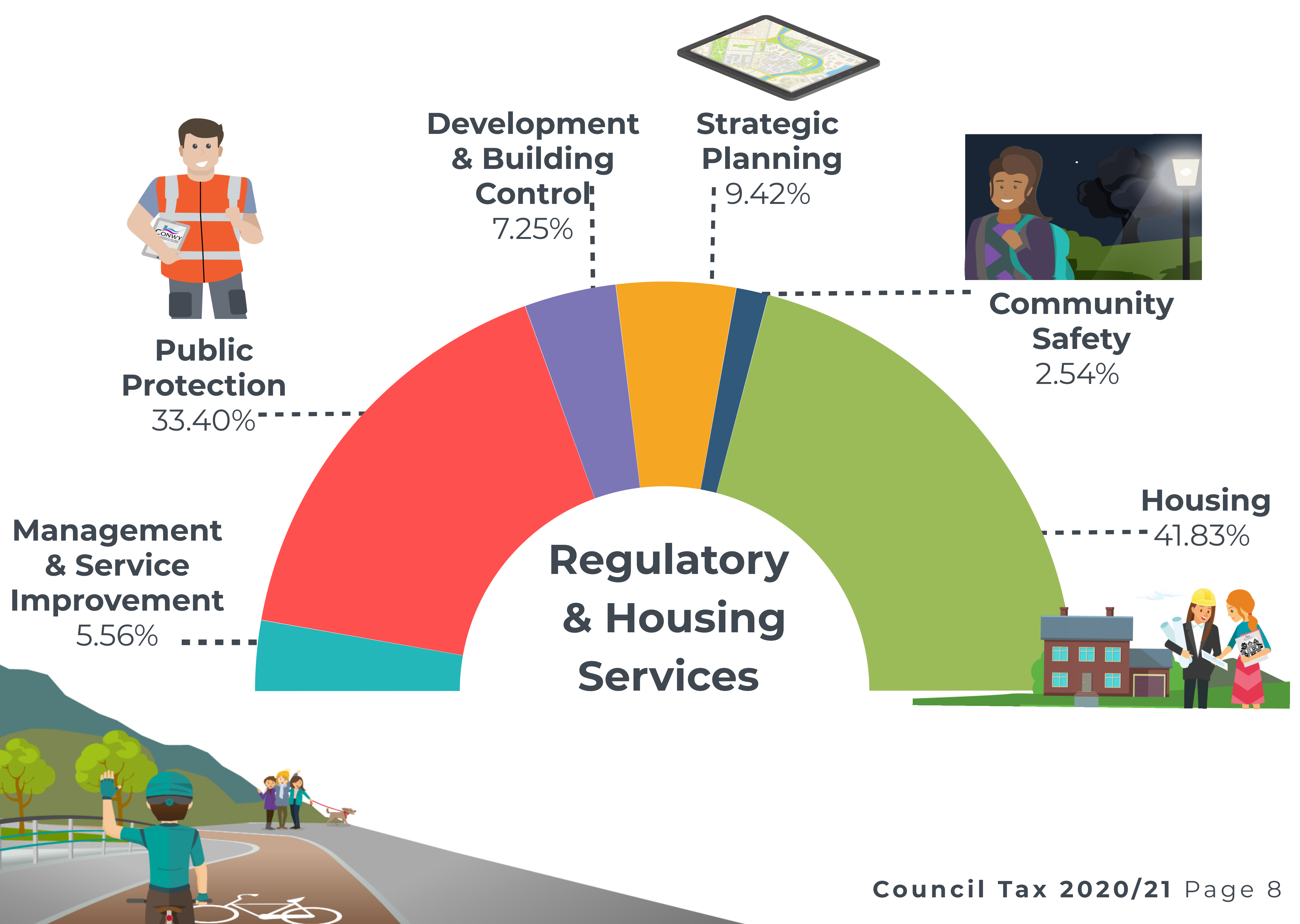
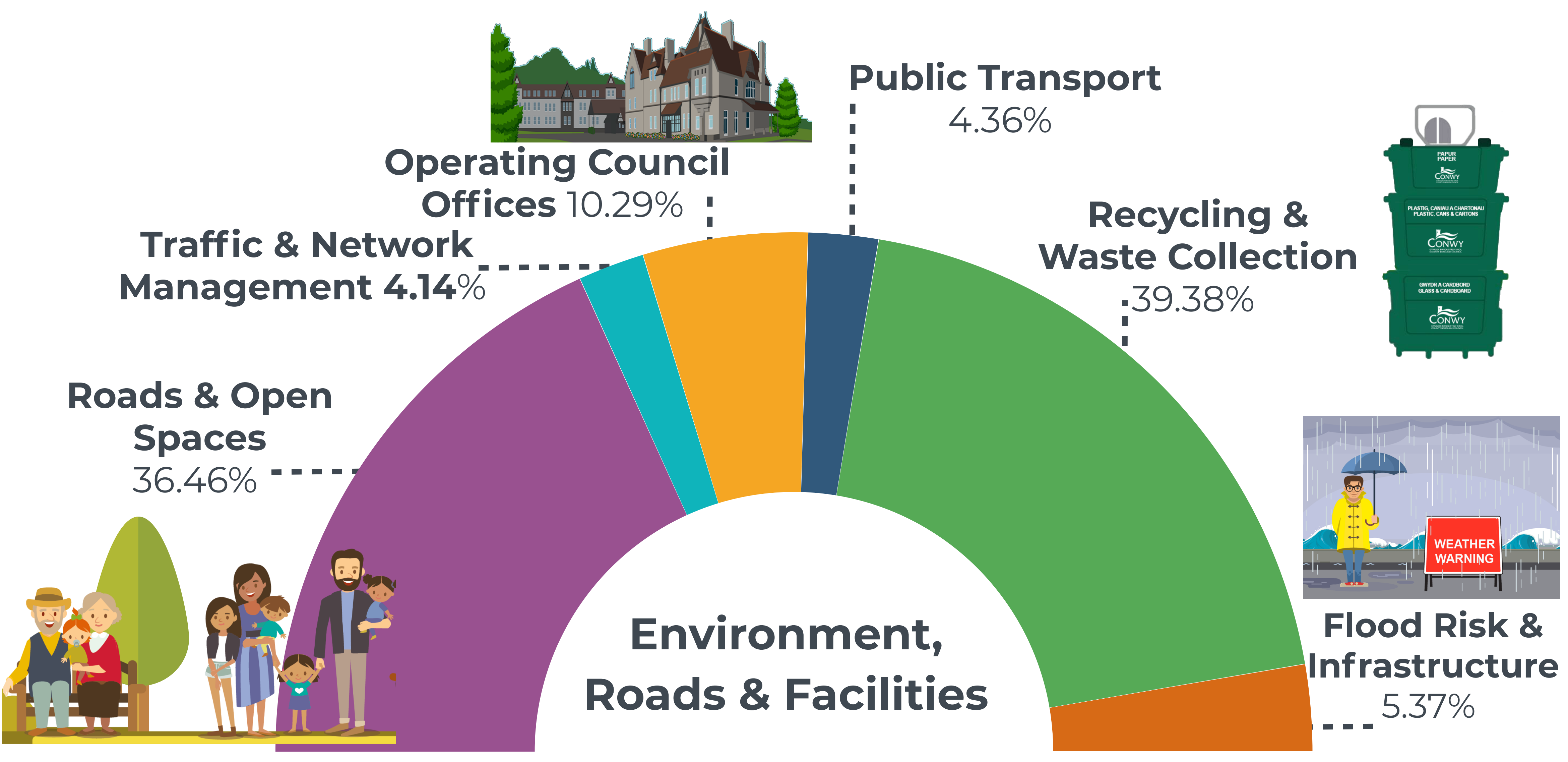
This is the money we use to pay for your day to day services - such as educating your children, caring for the elderly and collecting & disposing of your recycling and waste.



# How this is invested by our main services



# How this is invested by our main services



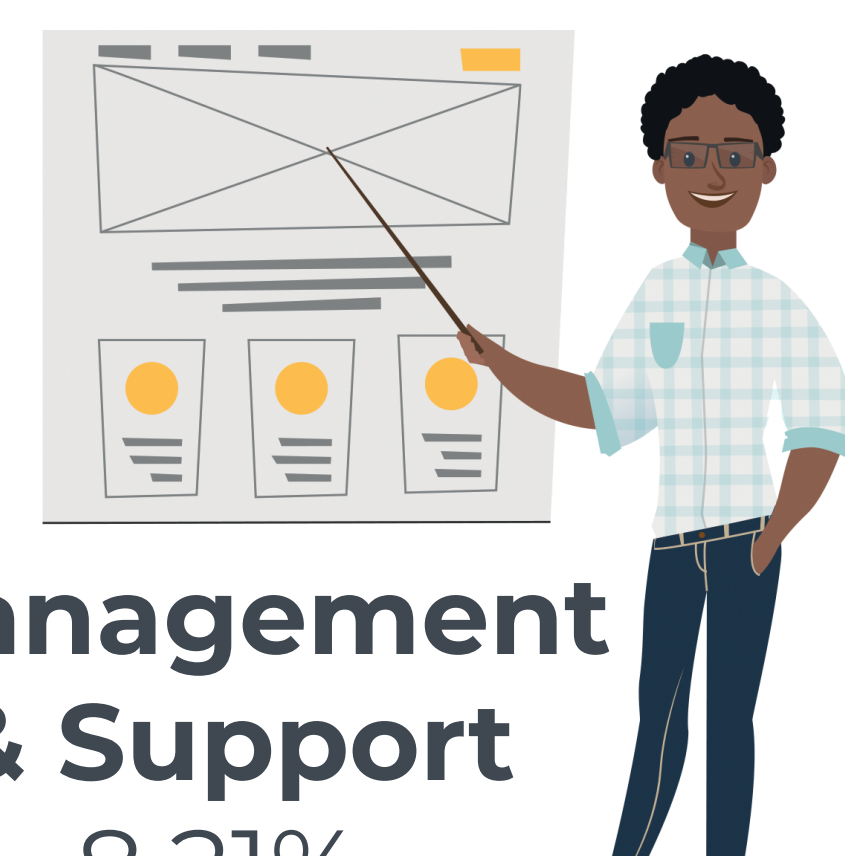


# How this is invested by our main services

**Culture & Information**  
36.41%



**Youth Services**  
14.86%



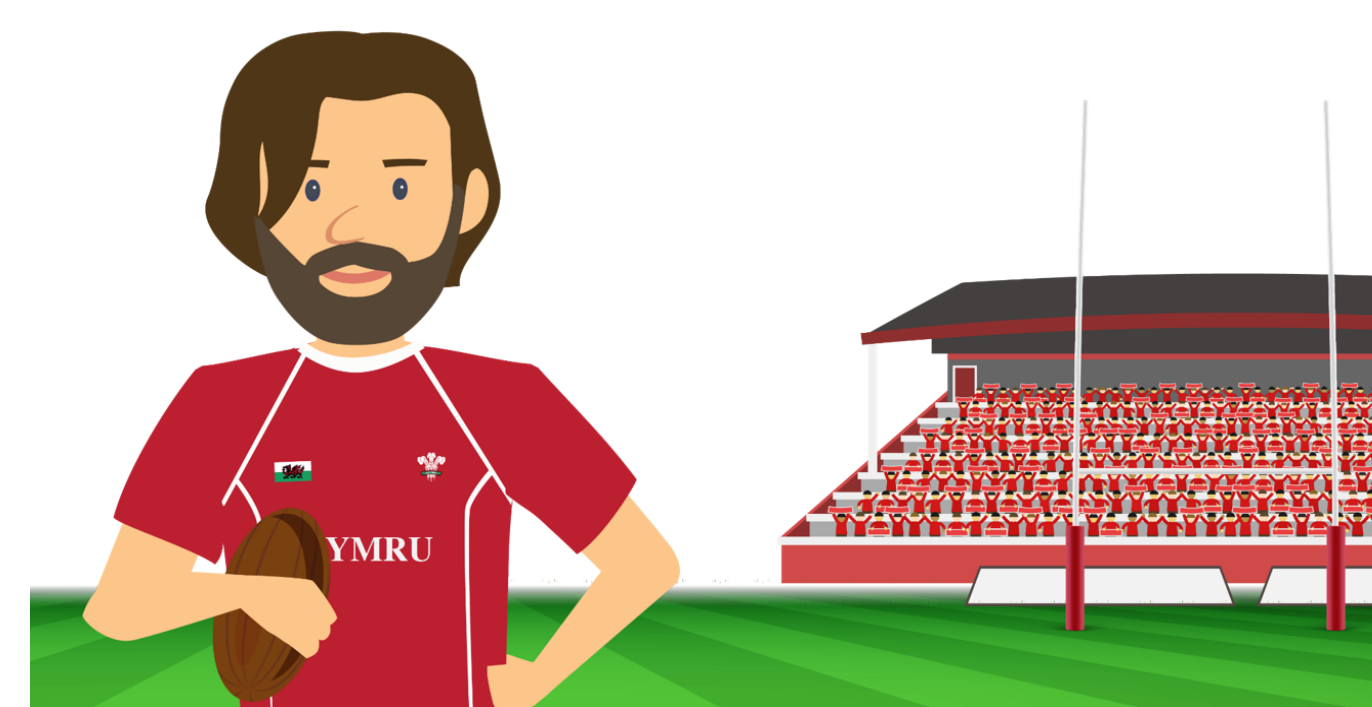
**Management & Support**  
8.21%

**Community Development Service**

**Business & Tourism**  
11.24%



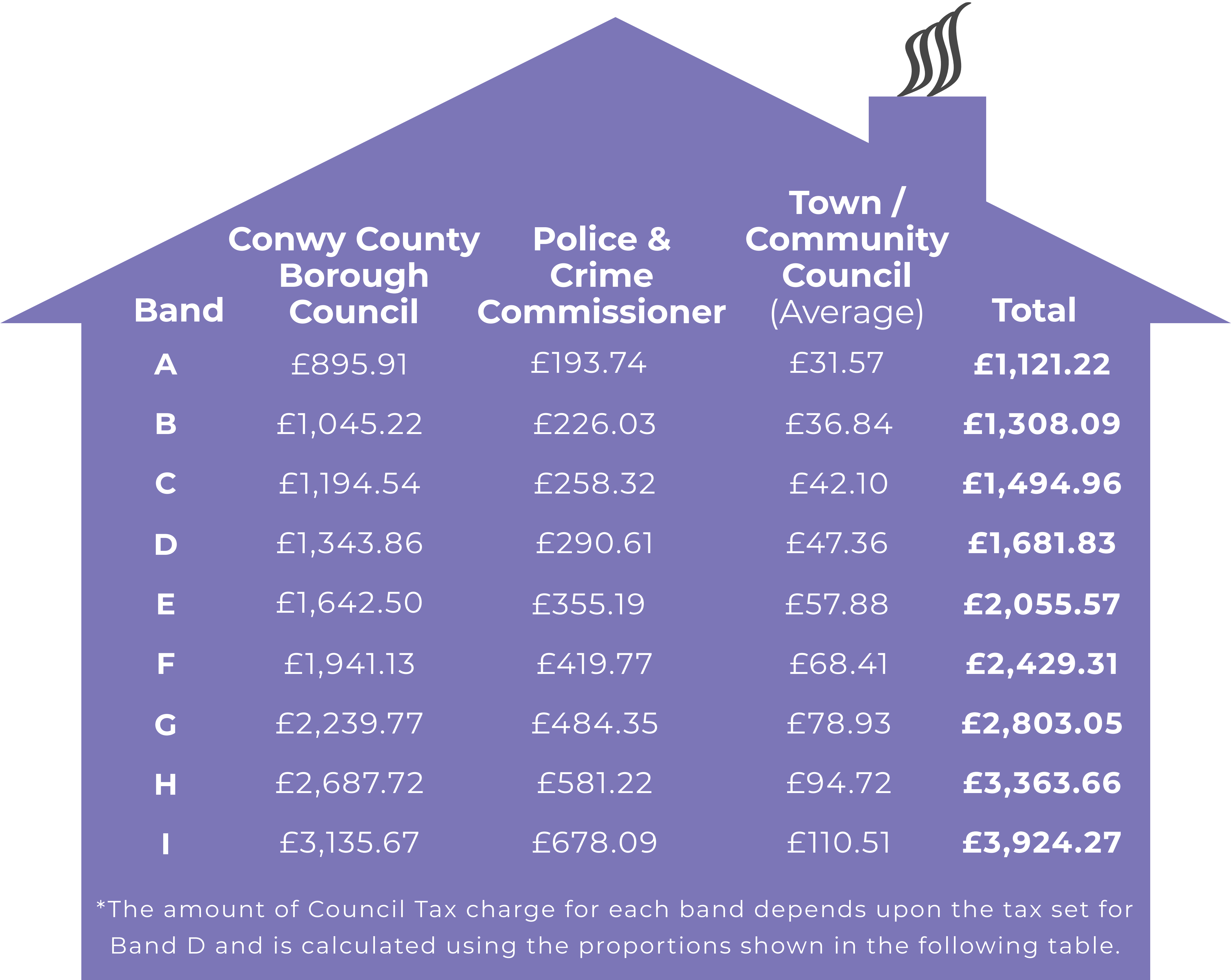
**Leisure Facilities**  
29.28%



# How your Council Tax is calculated

The Council Tax you pay depends on the valuation your property. Your property will have been allocated a band based on the value of your house as at 1 April 2003.

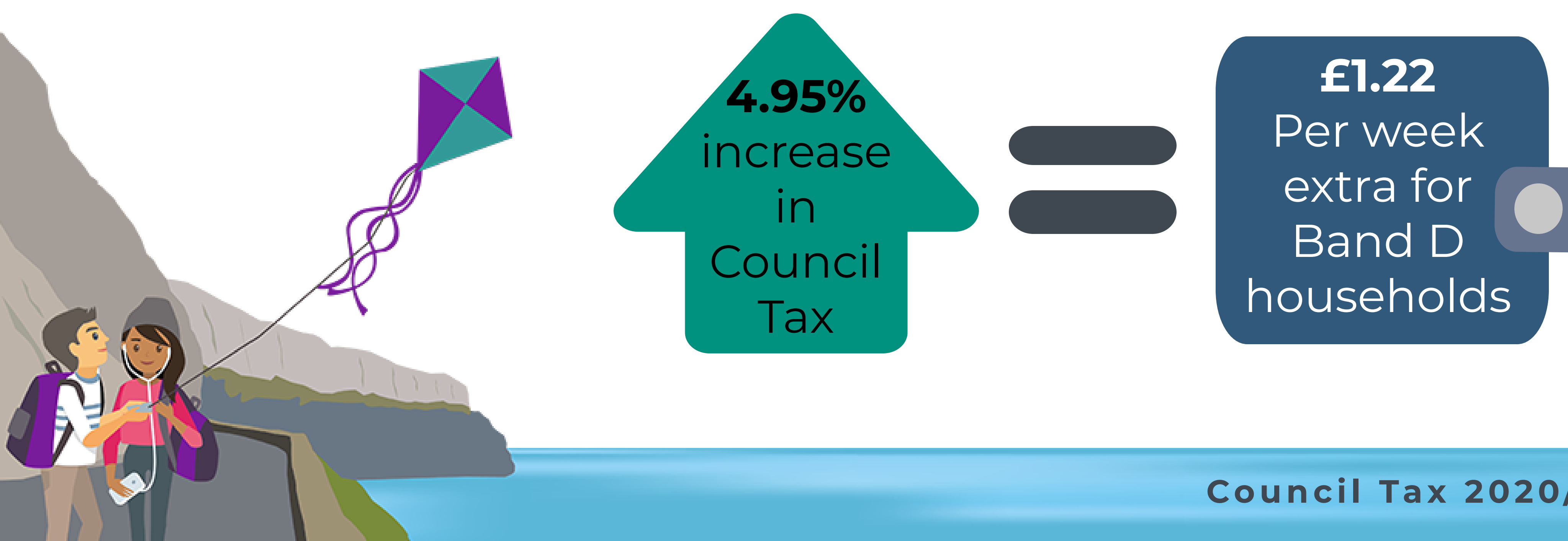
Not all Council Tax collected pays for council services, it also supports **North Wales Police & Crime Commissioner** and individual Town and Community Councils.



Band	Conwy County Borough Council	Police & Crime Commissioner	Town / Community Council (Average)	Total
A	£895.91	£193.74	£31.57	<b>£1,121.22</b>
B	£1,045.22	£226.03	£36.84	<b>£1,308.09</b>
C	£1,194.54	£258.32	£42.10	<b>£1,494.96</b>
D	£1,343.86	£290.61	£47.36	<b>£1,681.83</b>
E	£1,642.50	£355.19	£57.88	<b>£2,055.57</b>
F	£1,941.13	£419.77	£68.41	<b>£2,429.31</b>
G	£2,239.77	£484.35	£78.93	<b>£2,803.05</b>
H	£2,687.72	£581.22	£94.72	<b>£3,363.66</b>
I	£3,135.67	£678.09	£110.51	<b>£3,924.27</b>

\*The amount of Council Tax charge for each band depends upon the tax set for Band D and is calculated using the proportions shown in the following table.

There is an increase in demand for our statutory services. To contribute to the **£11 million** resource shortfall for 2020/21 there has been a...



Treth y Cyngor Band D ym mhob Tref/Cymuned / Band D Council Tax in Each Town/Community

Bandiau/Banding

Taliadau Cyngorau Tref/Cymuned Town/Community Council Precepts		CYNGOR TREF/CYMUNED TOWN/COMMUNITY COUNCIL	Treth Sylfaenol Council Tax Base	Cyngor Sir Bwrdeistref Conwy Conwy County Borough Council	Comisiynydd Heddlu a Throsedd G.Cymru Police & Crime Commissioner N.Wales	Cyngorau Tref/Cymuned Town/Community Council	Treth y cyngor yn ôl BAND D Council Tax at BAND D	Annedd yn Property in	Byddwch yn Talu You Pay
2019/20 £	2020/21 £			£	£	£	£		
270,000	290,238	<b>Abergele</b>	4,804.67	1,343.86	290.61	60.41	1,694.88	<b>BAND A</b>	6/9fed o daliad Band D yn eich Cymuned
456,000	479,700	<b>Bae Colwyn / Bay of Colwyn</b>	11,488.89	1,343.86	290.61	41.75	1,676.22		6/9ths of the Band D Charge in your Community
3,000	3,000	<b>Betws-y-Coed</b>	255.63	1,343.86	290.61	11.74	1,646.21		
9,000	9,000	<b>Betws-yn-Rhos</b>	500.36	1,343.86	290.61	17.99	1,652.46	<b>BAND B</b>	7/9fed o daliad Band D yn eich Cymuned
3,500	3,600	<b>Bro Garmon</b>	321.99	1,343.86	290.61	11.18	1,645.65		7/9ths of the Band D Charge in your Community
5,000	5,500	<b>Bro Machno</b>	350.21	1,343.86	290.61	15.70	1,650.17		
10,500	10,250	<b>Caerhun</b>	668.01	1,343.86	290.61	15.34	1,649.81	<b>BAND C</b>	8/9fed o daliad Band D yn eich Cymuned
2,000	2,500	<b>Capel Curig</b>	104.34	1,343.86	290.61	23.96	1,658.43		8/9ths of the Band D Charge in your Community
5,000	6,000	<b>Cerrigydrudion</b>	294.98	1,343.86	290.61	20.34	1,654.81		
276,363	284,653	<b>Conwy</b>	7,267.47	1,343.86	290.61	39.17	1,673.64	<b>BAND D</b>	Y taliad yn eich cymuned a ddangosir yn y tabl
5,775	5,775	<b>Dolgarrog</b>	163.48	1,343.86	290.61	35.33	1,669.80		The charge for your community in the table
9,000	10,000	<b>Dolwyddelan</b>	244.75	1,343.86	290.61	40.86	1,675.33		
7,057	7,057	<b>Eglwysbach</b>	456.64	1,343.86	290.61	15.45	1,649.92	<b>BAND E</b>	11/9fed o daliad Band D yn eich Cymuned
4,596	4,688	<b>Henryd</b>	402.61	1,343.86	290.61	11.64	1,646.11		11/9ths of the Band D Charge in your Community
5,500	6,200	<b>Llanddoged a/and Maenan</b>	293.06	1,343.86	290.61	21.16	1,655.63		
16,582	16,582	<b>Llanddulas a/and Rhyd-y-Foel</b>	760.42	1,343.86	290.61	21.81	1,656.28	<b>BAND F</b>	13/9fed o daliad Band D yn eich Cymuned
467,254	514,491	<b>Llandudno</b>	9,327.83	1,343.86	290.61	55.16	1,689.63		13/9ths of the Band D Charge in your Community
97,999	100,974	<b>Llanfairfechan</b>	1,477.28	1,343.86	290.61	68.35	1,702.82		
12,000	10,000	<b>Llanfairtalhaiarn</b>	461.58	1,343.86	290.61	21.66	1,656.13	<b>BAND G</b>	15/9fed o daliad Band D yn eich Cymuned
4,800	4,800	<b>Llanfihangel Glyn Myfyr</b>	96.71	1,343.86	290.61	49.63	1,684.10		15/9ths of the Band D Charge in your Community
9,750	9,750	<b>Llangernyw</b>	494.29	1,343.86	290.61	19.73	1,654.20		
4,200	4,200	<b>Llangwm</b>	226.07	1,343.86	290.61	18.58	1,653.05	<b>BAND H</b>	21/9fed o daliad Band D yn eich Cymuned
8,000	9,000	<b>Llanefydd</b>	253.78	1,343.86	290.61	35.46	1,669.93		21/9ths of the Band D Charge in your Community
89,738	96,257	<b>Llanrwst</b>	1,219.97	1,343.86	290.61	78.90	1,713.37		
25,000	30,000	<b>Llansanffraid Glan Conwy</b>	1,085.33	1,343.86	290.61	27.64	1,662.11	<b>BAND I</b>	Dwywaith cyfanswm taliad Band D yn eich Cymuned
20,000	20,600	<b>Llansannan</b>	587.87	1,343.86	290.61	35.04	1,669.51		Twice the Band D Charge in your Community
14,248	16,959	<b>Llysfaen</b>	887.67	1,343.86	290.61	19.11	1,653.58		
13,084	13,084	<b>Mochdre</b>	665.67	1,343.86	290.61	19.65	1,654.12	<b>BAND I</b>	21/9fed o daliad Band D yn eich Cymuned
148,625	153,110	<b>Penmaenmawr</b>	1,796.87	1,343.86	290.61	85.21	1,719.68		21/9ths of the Band D Charge in your Community
4,100	4,200	<b>Pentrefoelas</b>	144.28	1,343.86	290.61	29.11	1,663.58		
203,850	238,545	<b>Towyn / Bae Cinmel/Kinmel Bay</b>	3,135.35	1,343.86	290.61	76.08	1,710.55	<b>BAND I</b>	
22,439	26,441	<b>Trefriw</b>	377.71	1,343.86	290.61	70.00	1,704.47		
3,800	3,800	<b>Ysbyty Ifan</b>	85.27	1,343.86	290.61	44.56	1,679.03		
<b>2,237,760</b>	<b>2,400,954</b>	<b>CYFANSWM/TOTAL</b>	<b>50,701.04</b>						
CYFARALEDD / AVERAGE				1,343.86	290.61	47.36	1,681.83		

Ar gyfer anheddau ym Mand D yn unig y mae'r tabl uchod. Os yw eich annedd chi mewn band arall, defnyddiwch y tabl i ganfod beth fydd eich bil treth. Amcangyfrif o'r incwm a dderbynnir am bob £1 o Dreth y Cyngor yw'r Dreth Sylfaenol. Mynegir hyn fel "cyfwerth â Band D", gan gymryd i ystyriaeth nifer yr anheddau o fewn pob band, ym mhob ardal gymunedol.

If your property falls within another property band other than Band D the information at the right of the table will help you calculate how much you will pay. Alternatively look at your council tax bill. The Tax Base is the estimated income that will be received for each £1 of Council Tax. It is expressed as a "Band D equivalent" and takes into account the number of properties within each band, in each community area.

# Reducing your Council Tax bill

## Reductions & Benefits

If you need help or advice about Council Tax Reduction or Housing Benefit you can contact the Revenue and Benefit Service by either emailing [benefits@conwy.gov.uk](mailto:benefits@conwy.gov.uk) or calling **01492 576491**.

If you already receive a reduction in your bill through a discount, you do not need to apply again.

## Benefit Fraud

Benefit fraud is a crime so if you know someone who is cheating the system call the 24 hour free fraud line in confidence on **0800 854 440** or visit [www.gov.uk/report-benefit-fraud](http://www.gov.uk/report-benefit-fraud).

## Discounts or Exemptions

If you believe you may be entitled to any discounts or exemptions, please visit [www.conwy.gov.uk/council-tax](http://www.conwy.gov.uk/council-tax) or contact the Council Tax unit on [counciltax@conwy.gov.uk](mailto:counciltax@conwy.gov.uk) or **01492 576607**.

You may qualify for a council tax reduction if you or someone who lives with you...



has a disability & your home has been adapted to meet their needs



is severely mentally impaired



is a care worker on low pay, employed for at least 24 hours per week & living where the care is given



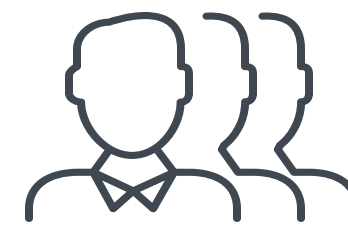
a person caring for someone on state benefits (more than 35 hours per week) who is not their spouse, partner or child under 18



is a full time student, student nurse, apprentice or Youth Training Trainee



is 18 or 19 years old who is at or has just left school



are members of certain religious communities that meet specified criteria



is in prison (except those in prison for non payment of Council Tax or a fine)



are in the Armed Forces & own a second home in Wales



is residing in hospital or a care home



are staying in hostels or night shelters



Or live on your own



Or you are on a low income

**Conwy has discretionary power to vary discounts in exceptional circumstances; for example, following flooding, under section 13a of the Local Government Finance Act 1992**



There are a number of properties on which you do not have to pay Council Tax. They include properties that are -

- Unfurnished (exempt for 6 months)
- Unoccupied & owned by a charity (exempt for 6 months)
- Unoccupied & undergoing or in need of structural repair or major alterations (exempt for 12 months)
- Unoccupied & are waiting for probate or letters of administration to be granted (exempt for up to 6 months after)
- Left empty by someone who has gone into prison, hospital or residential care home
- Left empty by someone who has moved in order to provide or receive personal care
- Left empty by students
- Repossessed
- The responsibility of a bankrupt's trustee
- Empty because their occupation is forbidden by law

## Universal Credit

The Department for Work & Pensions have been nationally rolling out Universal Credit Full Service since May, 2016.

Universal Credit Full Service is now operational in the whole of Conwy County Borough.

Click on the following link for more information [www.conwy.gov.uk/universalcredit](http://www.conwy.gov.uk/universalcredit)

For information on how we use your data, visit [www.conwy.gov.uk/council-tax-privacy-notice](http://www.conwy.gov.uk/council-tax-privacy-notice)

— **However where a property has been left empty for longer than 6 months**

— **or is classed as a second home no discount will apply. An additional 25% Council Tax Premium for both Second & Long-term Empty Home will be applied from 1st April 2020.**

# BE DIGITAL

Conwy is modernising

Did you know Conwy offers the following services?

## E-Billing

Conwy County Borough Council can now offer you the option to receive your Council Tax bill by e-mail rather than through the post.

Visit [www.conwy.gov.uk/e-billing](http://www.conwy.gov.uk/e-billing) to find out more!

## Direct Debit

Direct Debit is the easiest method of payment for Council Tax and is the preferred option for more than 83% of the Council Tax payers in the Authority!

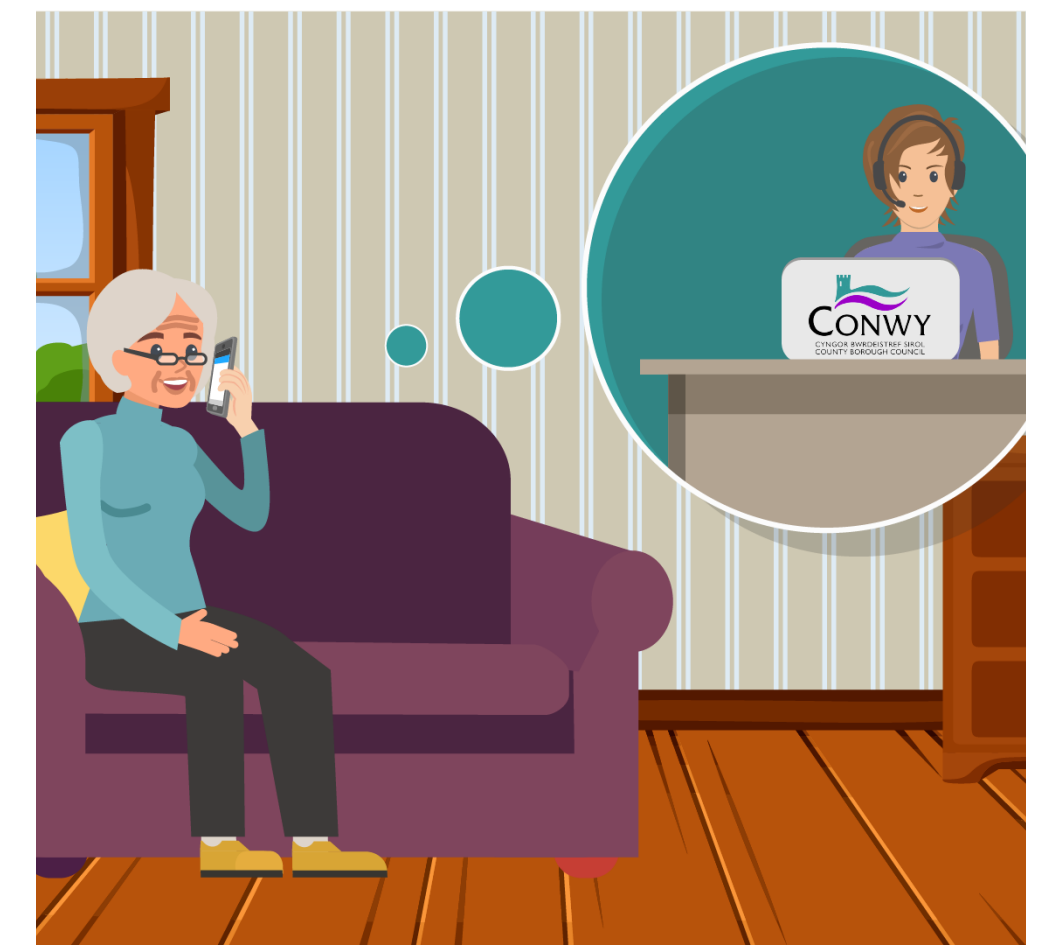
Visit [www.conwy.gov.uk/direct-debit](http://www.conwy.gov.uk/direct-debit) to find out more!

## AppConwy

This is a quick and efficient way to contact Conwy County Borough Council. AppConwy provides the latest news updates from the Council and features local service information such as school announcements, job vacancies and waste collection days.

To try our app simply download AppConwy from the AppStore, PlayStore or Windows Store.

Visit [www.conwy.gov.uk/AppConwy](http://www.conwy.gov.uk/AppConwy) to find out more!



[www.conwy.gov.uk/council-tax](http://www.conwy.gov.uk/council-tax)



[counciltax@conwy.gov.uk](mailto:counciltax@conwy.gov.uk)



01492 576607



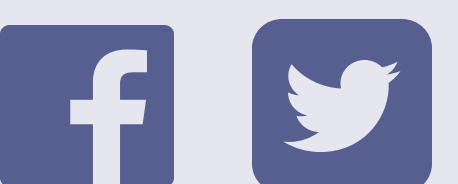
**Textphone:** Dial 18001 + the number of the service you want to contact

### Write to Us

PO Box 1  
Conwy  
LL30 9GN

### Visit Us

Coed Pella  
Conwy Road  
Colwyn Bay  
LL29 7AY



Call: 01492 576350

Email: [fostering@conwy.gov.uk](mailto:fostering@conwy.gov.uk)



  
**CONWY**  
CYNGOR BWRDEISTREF SIROL  
COUNTY BOROUGH COUNCIL