

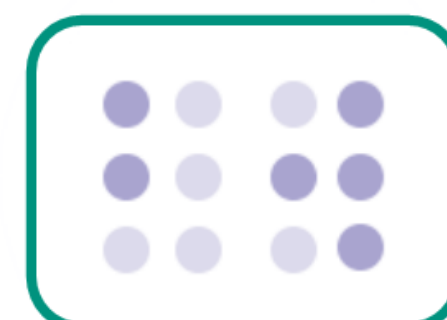
INVESTING IN YOUR COMMUNITY

Conwy Council Tax 2022/23



CONTENTS

What your money is spent on each year	03
How we are funded	04
How we spend the funding	05
How this is invested by our main services	07
How your Council Tax is calculated	10
Band D Council Tax in each Town/Community	11
Reducing your Council Tax bill	12
Contact Us	13



We are happy to provide this document in large print, audio, braille and British Sign Language.

What your money is spent on each year

2022/23

This example is based on a **Band D property council tax** of **£1,438.15** per year.

Education & Schools



£491.96

Social Care



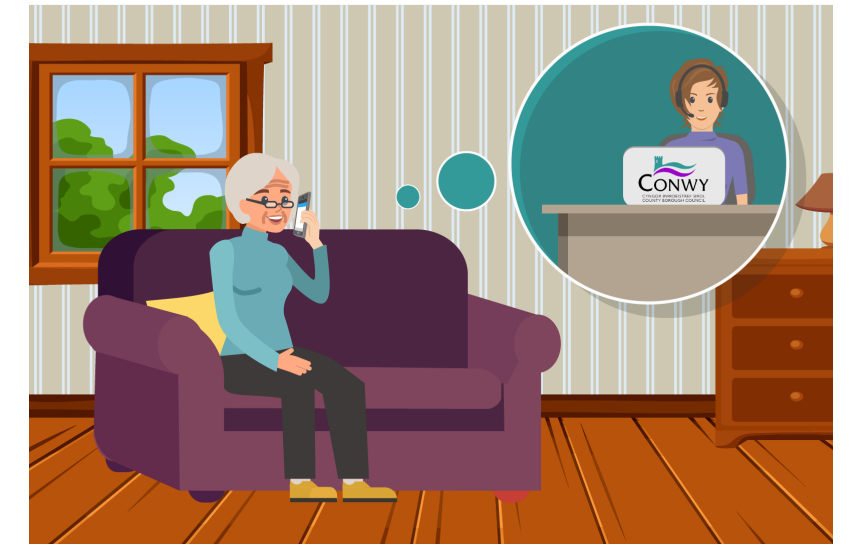
£420.93

Interest Costs & Asset Repayment



£91.14

Council Tax Reduction Scheme & Business Rate Relief



£66.38

Corporate Support Services



£43.48

Fire Service & National Park payments



£40.19

Emptying Bins & Recycling



£33.70

Roads & Infrastructure



£26.56

School Transport



£31.41

Public Protection, Licensing & Environmental Health



£18.25

Modernisation & Corporate Fees



£29.47

Tourism, Theatres, Conferences & Events



£11.61

Managing Council Buildings



£10.52

Democracy



£12.49

Waste to Energy Site/Disposal



£10.94

Libraries



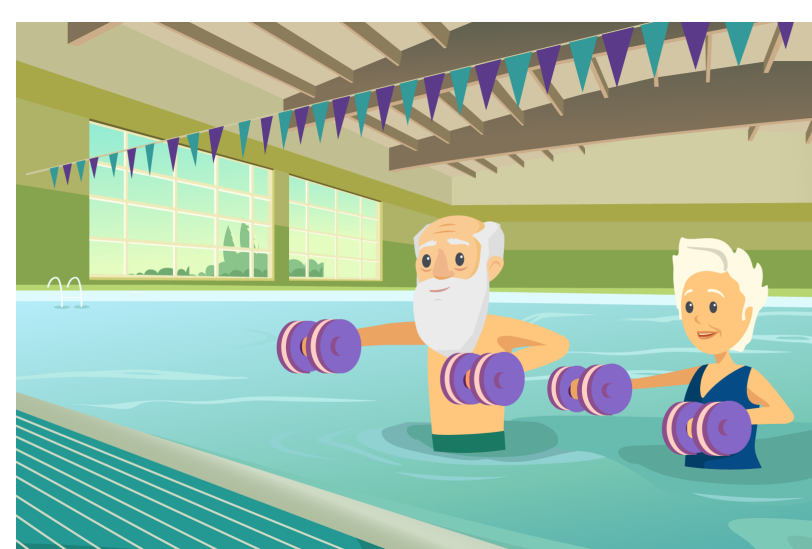
£13.24

Street Cleaning



£11.77

Swimming Pools & Leisure Centres



£12.93

Homelessness Prevention



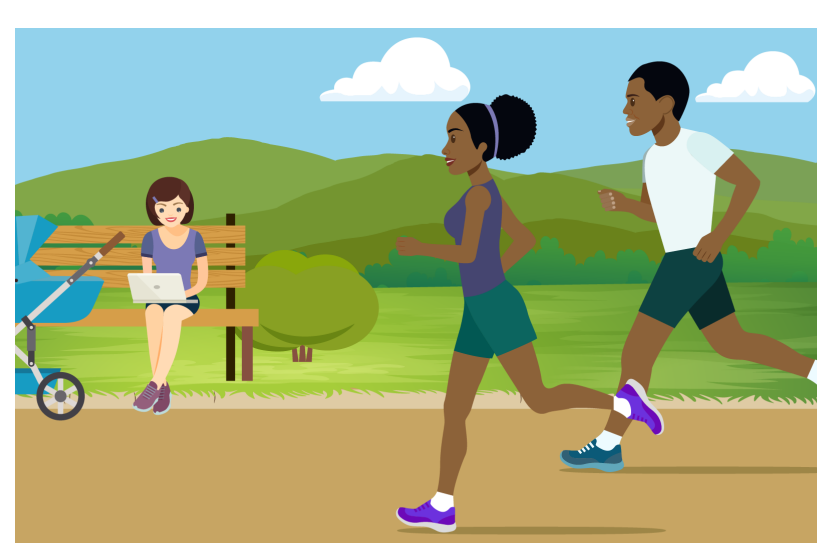
£23.79

Supporting Businesses & the Community



£12.53

Parks & Gardens



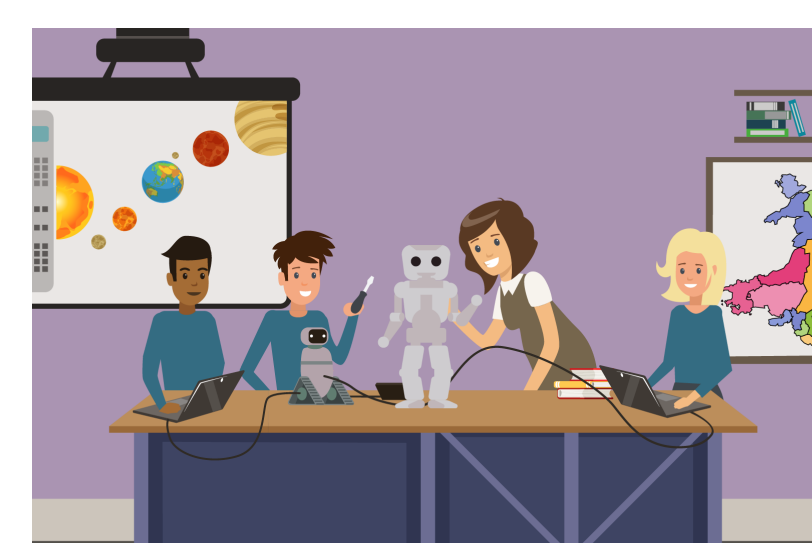
£8.12

Revenue and Benefits & Financial Assessment Team



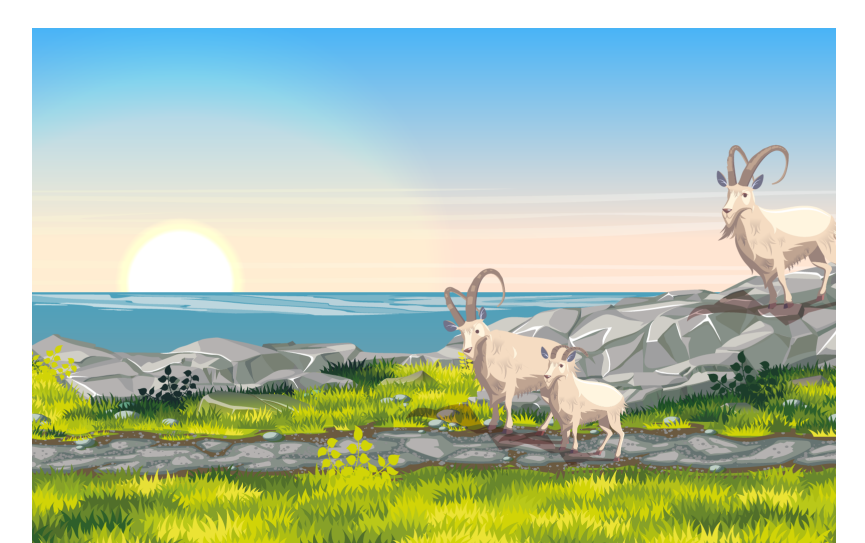
£6.82

Youth Services



£5.62

Countryside Management



£4.30

How we are funded

Did you know only



29%

of our funding comes from Council Tax?

Revenue Support Grant
(money we receive from
Welsh Government)

54.49%

**Council
Funding for
2022/23**
(%)

**Re-distributed
Business Rates**
(money received from
Welsh Government)

16.86%

Council Tax
28.65%

Revenue Support Grant £140.002m

Amount raised from Council Tax Payers £73.603m

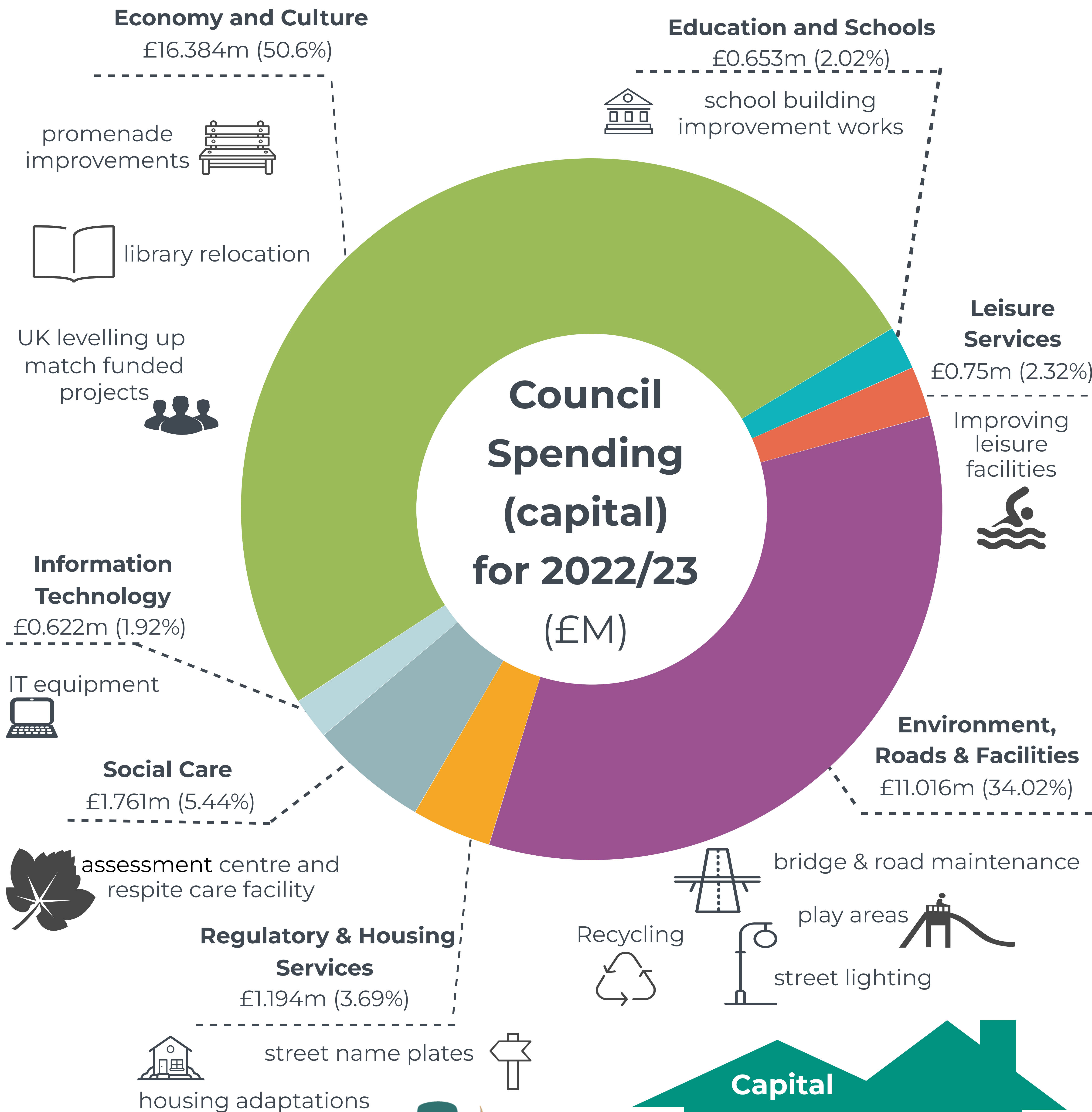
Re-distributed Business Rates £43.306m

Total £256.911m



How we spend the capital funding

For the financial year April 2022 to March 2023 the Council has a **capital budget** of **£32.380 million** to invest in the community. Here are some examples -

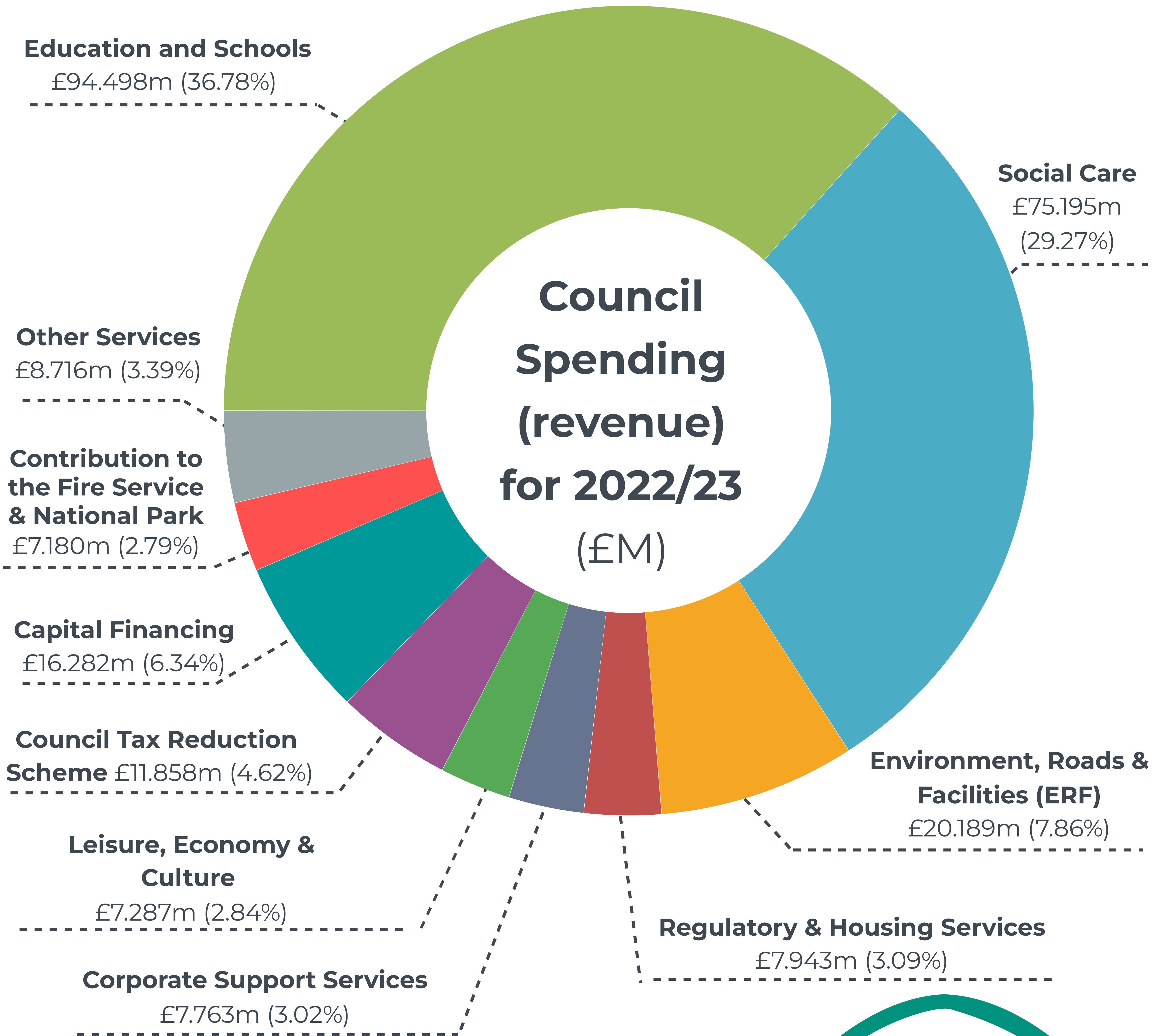


Capital
This is the money we use on big investments - such as roads, buildings, schools, re-cycling wagons and leisure centres etc.



How we spend the revenue funding

For the financial year April 2022 to March 2023 the Council has a **revenue budget** of **£256.911m** to invest in the community -

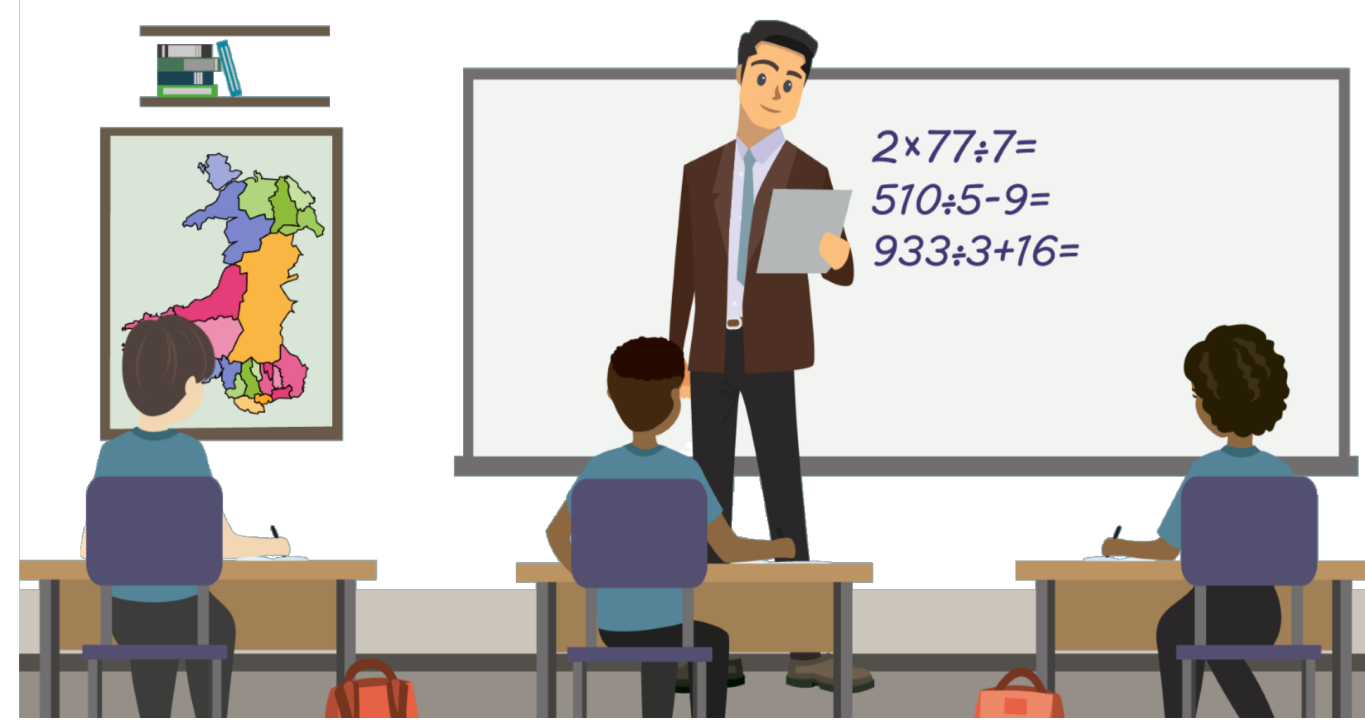


Revenue

This is the money we use to pay for your day to day services - such as educating your children, caring for the elderly and collecting & disposing of your recycling and waste.

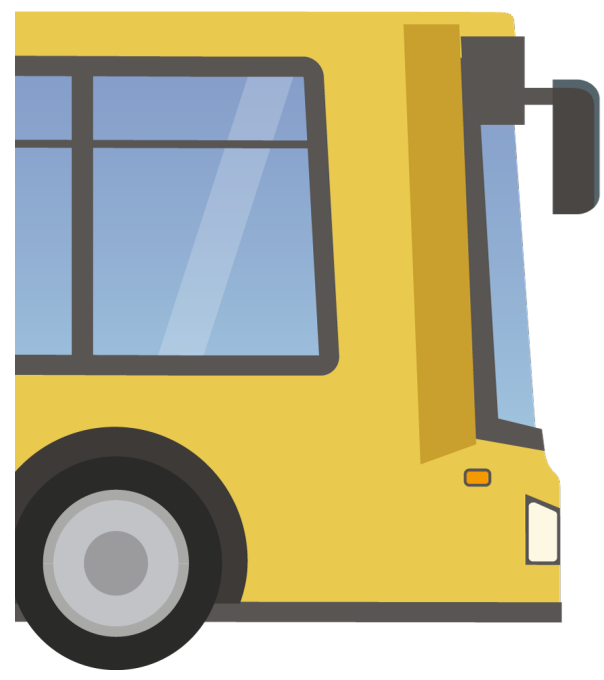


How this is invested by our main services



Schools Budget
80.87%

Youth & Family Services
1.06%



Home to School Transport
5.94%

Education & Schools Support
12.13%



Family Support & Intervention
3.02%



Supporting Looked After Children
13.32%



Business Support & Transformation
6.15%



Supporting Vulnerable People
8.35%

Youth Justice
0.22%

Community Well-being
1.16%



Older People & Hospital Social Work
34.45%

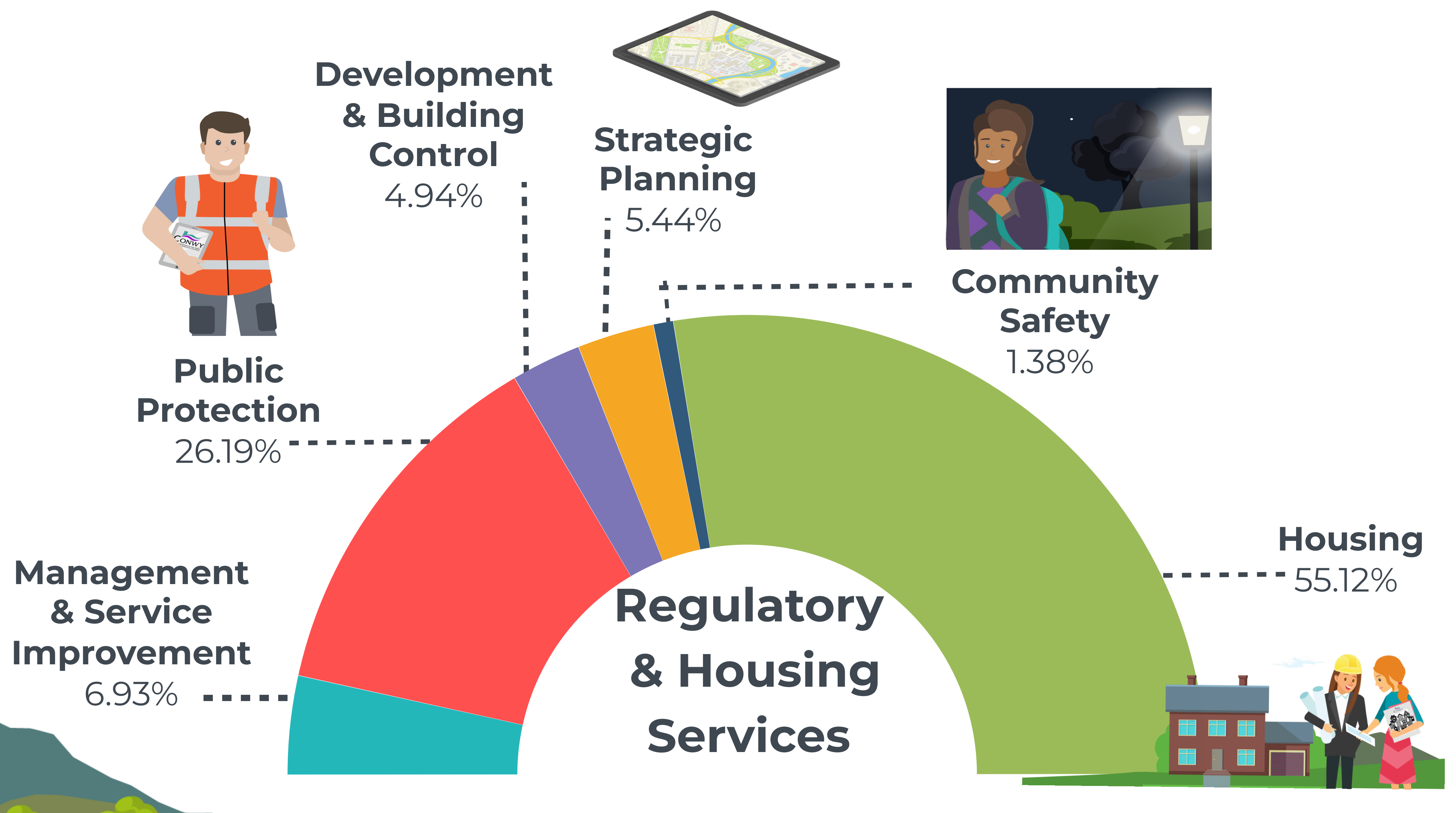
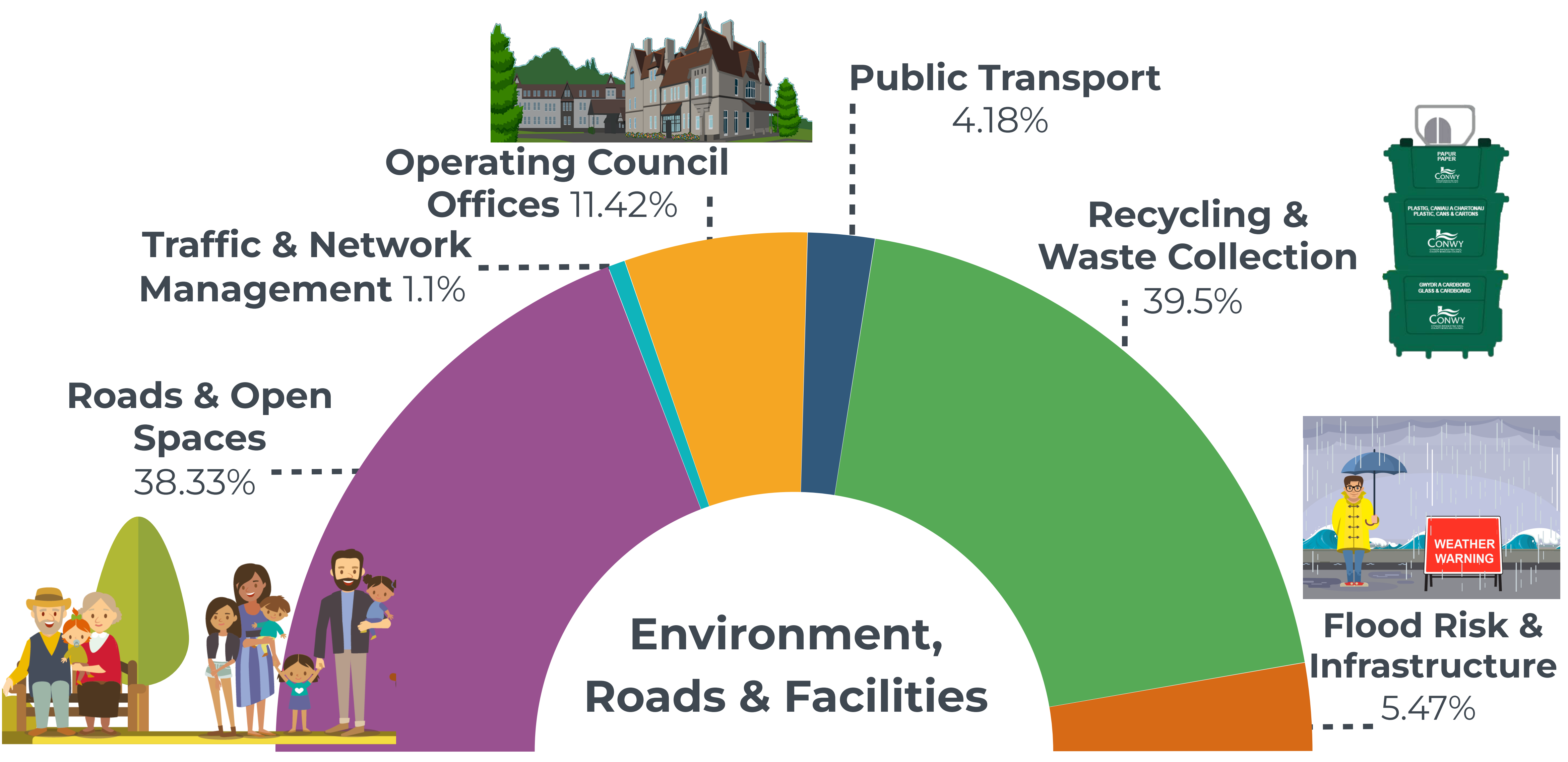
Quality Standards & Commissioning
1.44%

Disability Support
31.55%

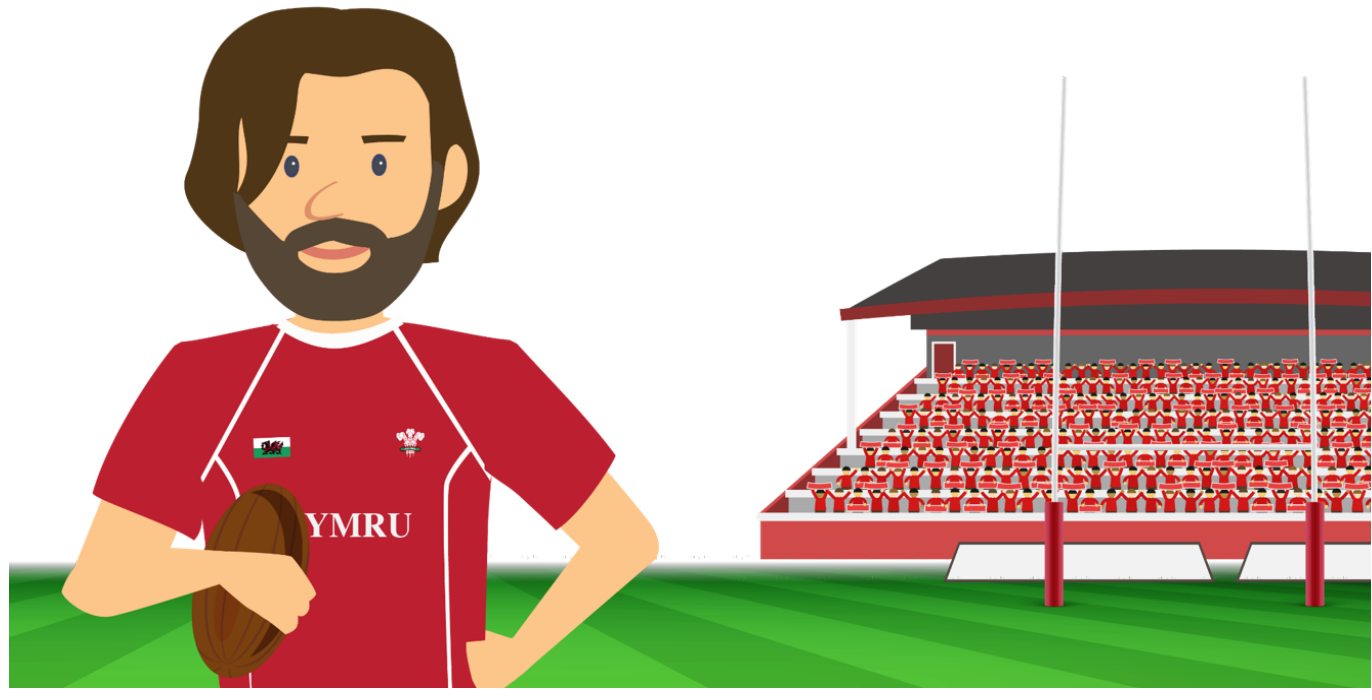
Safeguarding
0.34%



How this is invested by our main services



How this is invested by our main services



Leisure Facilities

31.69%



Business & Tourism

13.21%

Marketing & Communications

7.19%

Leisure, Economy & Culture

Venues, Events and Estate Management

15.43%

Culture & Information

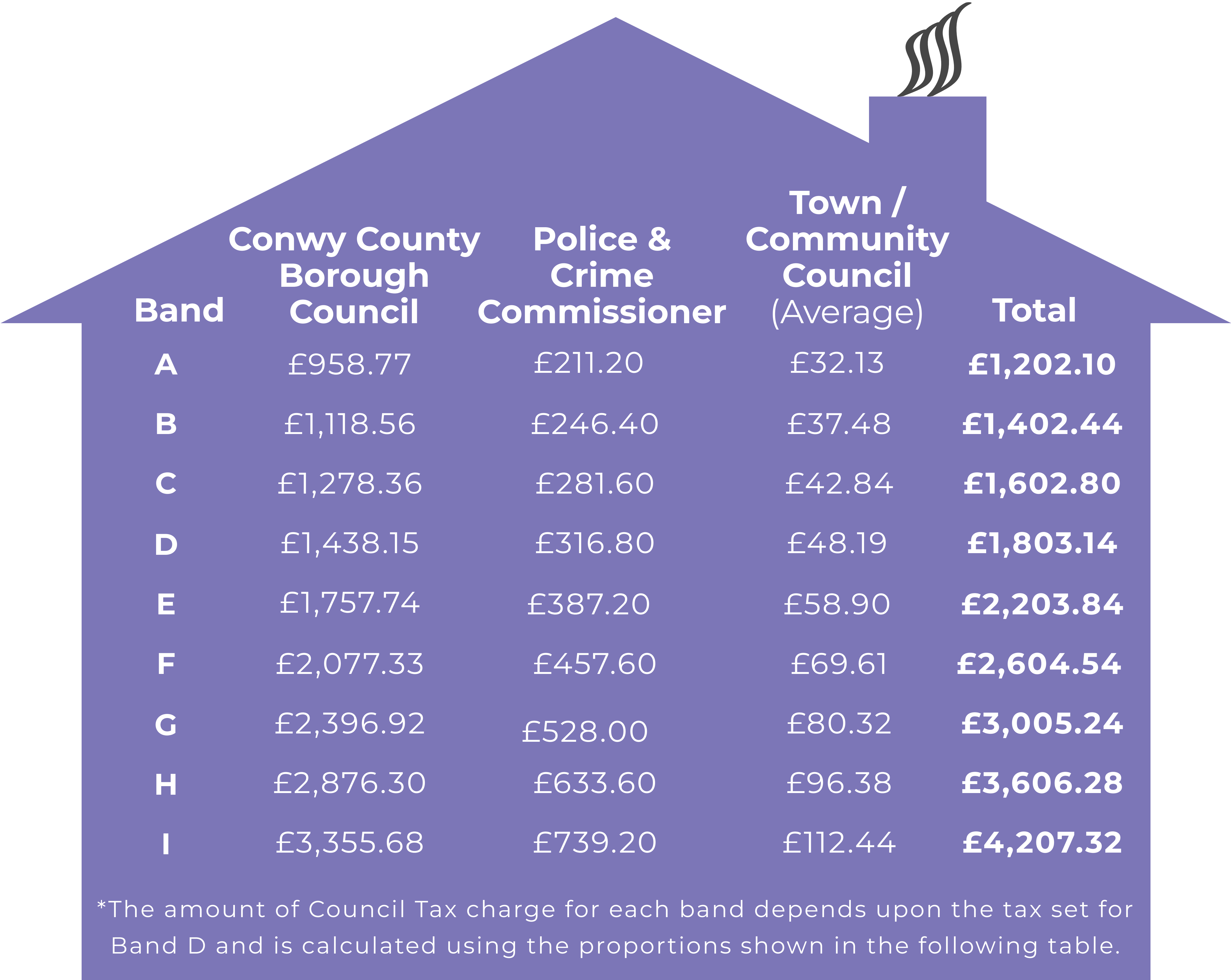
32.48%



How your Council Tax is calculated

The Council Tax you pay depends on the valuation your property. Your property will have been allocated a band based on the value of your house as at 1 April 2003.

Not all Council Tax collected pays for council services, it also supports [North Wales Police & Crime Commissioner](#) and individual Town and Community Councils.



Band	Conwy County Borough Council	Police & Crime Commissioner	Town / Community Council (Average)	Total
A	£958.77	£211.20	£32.13	£1,202.10
B	£1,118.56	£246.40	£37.48	£1,402.44
C	£1,278.36	£281.60	£42.84	£1,602.80
D	£1,438.15	£316.80	£48.19	£1,803.14
E	£1,757.74	£387.20	£58.90	£2,203.84
F	£2,077.33	£457.60	£69.61	£2,604.54
G	£2,396.92	£528.00	£80.32	£3,005.24
H	£2,876.30	£633.60	£96.38	£3,606.28
I	£3,355.68	£739.20	£112.44	£4,207.32

*The amount of Council Tax charge for each band depends upon the tax set for Band D and is calculated using the proportions shown in the following table.

There is an increase in demand for our statutory services. To contribute to the **£7.843 million** resource shortfall for 2022/23 there has been a...



Band D Council Tax in each Town / Community

Treth y Cyngor Band D ym mhob Tref/Cymuned / Band D Council Tax in Each Town/Community

Bandiau/Banding

Taliadau Cyngorau Tref/Cymuned Town/Community Council Precepts		CYNGOR TREF/CYMUNED TOWN/COMMUNITY COUNCIL	Treth Sylfaenol Council Tax Base	Cyngor Sir	Comisiynydd Heddlu a	Cyngorau	Treth y cyngor	Annedd yn Property in	Byddwch yn Talu You Pay
2021/22 £	2022/23 £			Bwrdeistref Conwy Conwy County Borough Council	Throsedd G.Cymru Police & Crime Commissioner N.Wales	Tref/Cymuned Town/Community Council	yn ôl BAND D Council Tax at BAND D		
				£	£	£	£		
297,249	299,749	Abergele	4,951.02	1,438.15	316.80	60.54	1,815.49	BAND A	6/9fed o daliad Band D yn eich Cymuned
484,000	484,000	Bae Colwyn / Bay of Colwyn	11,576.17	1,438.15	316.80	41.81	1,796.76		6/9ths of the Band D Charge in your Community
3,000	0	Betws-y-Coed	248.02	1,438.15	316.80	0.00	1,754.95	BAND B	7/9fed o daliad Band D yn eich Cymuned
8,000	8,000	Betws-yn-Rhos	498.69	1,438.15	316.80	16.04	1,770.99		7/9ths of the Band D Charge in your Community
3,750	4,500	Bro Garmon	320.08	1,438.15	316.80	14.06	1,769.01	BAND C	8/9fed o daliad Band D yn eich Cymuned
5,500	6,000	Bro Machno	342.97	1,438.15	316.80	17.49	1,772.44		8/9ths of the Band D Charge in your Community
10,500	10,500	Caerhun	670.58	1,438.15	316.80	15.66	1,770.61	BAND D	Y taliad yn eich cymuned a ddangosir yn y tabl
2,500	2,499	Capel Curig	105.29	1,438.15	316.80	23.73	1,778.68		The charge for your community in the table
5,000	6,000	Cerrigydrudion	301.18	1,438.15	316.80	19.92	1,774.87	BAND E	11/9fed o daliad Band D yn eich Cymuned
284,653	286,659	Conwy	7,378.65	1,438.15	316.80	38.85	1,793.80		11/9ths of the Band D Charge in your Community
5,775	5,775	Dolgarrog	158.65	1,438.15	316.80	36.40	1,791.35	BAND F	13/9fed o daliad Band D yn eich Cymuned
10,000	10,000	Dolwyddelan	243.76	1,438.15	316.80	41.02	1,795.97		13/9ths of the Band D Charge in your Community
7,763	7,763	Eglwysbach	452.05	1,438.15	316.80	17.17	1,772.12	BAND G	15/9fed o daliad Band D yn eich Cymuned
4,688	4,688	Henryd	405.55	1,438.15	316.80	11.56	1,766.51		15/9ths of the Band D Charge in your Community
6,200	6,500	Llanddoded a/and Maenan	291.15	1,438.15	316.80	22.33	1,777.28	BAND H	Dwywaith cyfanswm taliad Band D yn eich Cymuned
15,536	27,196	Llanddulas a/and Rhyd-y-Foel	756.21	1,438.15	316.80	35.96	1,790.91		Twice the Band D Charge in your Community
487,234	501,600	Llandudno	9,299.99	1,438.15	316.80	53.94	1,808.89	BAND I	21/9fed o daliad Band D yn eich Cymuned
100,000	100,000	Llanfairfechan	1,481.26	1,438.15	316.80	67.51	1,822.46		21/9ths of the Band D Charge in your Community
12,500	12,000	Llanfairtalhaiarn	467.26	1,438.15	316.80	25.68	1,780.63		
4,800	5,300	Llanfihangel Glyn Myfyr	94.76	1,438.15	316.80	55.93	1,810.88		
8,750	10,230	Llangernyw	484.43	1,438.15	316.80	21.12	1,776.07		
4,200	4,200	Llangwm	224.08	1,438.15	316.80	18.74	1,773.69		
9,000	9,000	Llanefydd	257.99	1,438.15	316.80	34.89	1,789.84		
95,657	112,072	Llanrwst	1,209.21	1,438.15	316.80	92.68	1,847.63		
30,000	30,000	Llansanffraid Glan Conwy	1,098.17	1,438.15	316.80	27.32	1,782.27		
20,000	20,000	Llansannan	585.67	1,438.15	316.80	34.15	1,789.10		
16,956	19,455	Llysfaen	880.58	1,438.15	316.80	22.09	1,777.04		
13,084	13,083	Mochdre	667.80	1,438.15	316.80	19.59	1,774.54		
156,110	163,916	Penmaenmawr	1,809.62	1,438.15	316.80	90.58	1,845.53		
4,400	4,600	Pentrefoelas	142.09	1,438.15	316.80	32.37	1,787.32		
284,532	252,964	Towyn / Bae Cinnel/Kinmel Bay	3,154.46	1,438.15	316.80	80.19	1,835.14		
22,203	26,345	Trefriw	380.17	1,438.15	316.80	69.30	1,824.25		
3,800	4,000	Ysbyty Ifan	83.41	1,438.15	316.80	47.96	1,802.91		
2,427,339	2,458,593	CYFANSWM/TOTAL	51,020.98						
CYFARTALEDD / AVERAGE				1,438.15	316.80	48.19	1,803.14		

Ar gyfer anheddau ym Mand D yn unig y mae'r tabl uchod. Os yw eich annedd chi mewn band arall, defnyddiwch y tabl i ganfod beth fydd eich bil treth. Amcangyfrif o'r incwm a dderbynnir am bob £1 o Dreth y Cyngor yw'r Dreth Sylfaenol. Mynegir hyn fel "cyfwerth â Band D", gan gymryd i ystyriaeth nifer yr anheddau o fewn pob band, ym mhob ardal gymunedol.

If your property falls within another property band other than Band D the information at the right of the table will help you calculate how much you will pay. Alternatively look at your council tax bill. The Tax Base is the estimated income that will be received for each £1 of Council Tax. It is expressed as a "Band D equivalent" and takes into account the number of properties within each band, in each community area.

If your property falls within another property band other than Band D the information at the right will help you calculate how much you will pay. Alternatively look at your council tax bill. The Tax Base is the estimated income that will be received for each £1 of Council Tax. It is expressed as a "Band D equivalent" and takes into account the number of properties within each band, in each community area.

- A** - 6/9ths of the Band D Charge in your Community
- B** - 7/9ths of the Band D Charge in your Community
- C** - 8/9ths of the Band D Charge in your Community
- D** - The charge for your community in the table
- E** - 11/9ths of the Band D Charge in your Community
- F** - 13/9ths of the Band D Charge in your Community
- G** - 15/9ths of the Band D Charge in your Community
- H** - Twice the Band D Charge in your Community
- I** - 21/9ths of the Band D Charge in your Community

Reducing your Council Tax bill

Reductions & Benefits

If you need help or advice about Council Tax Reduction or Housing Benefit you can contact the Revenue and Benefit Service by either emailing benefits@conwy.gov.uk or calling **01492 576491**.

If you already receive a reduction in your bill through a discount, you do not need to apply again.

Benefit Fraud

Benefit fraud is a crime so if you know someone who is cheating the system call the 24 hour free fraud line in confidence on **0800 854 440** or visit www.gov.uk/report-benefit-fraud.

Discounts or Exemptions

If you believe you may be entitled to any discounts or exemptions, please visit www.conwy.gov.uk/council-tax or contact the Council Tax unit on counciltax@conwy.gov.uk or **01492 576607**.

You may qualify for a council tax reduction if you or someone who lives with you...



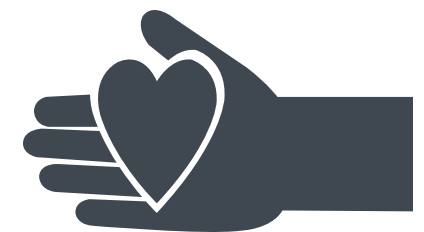
has a disability & your home has been adapted to meet their needs



is severely mentally impaired



is a care worker on low pay, employed for at least 24 hours per week & living where the care is given



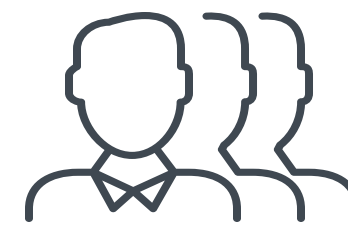
a person caring for someone on state benefits (more than 35 hours per week) who is not their spouse, partner or child under 18



is a full time student, student nurse, apprentice or Youth Training Trainee



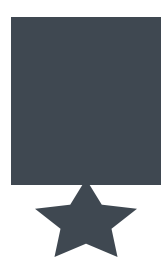
is 18 or 19 years old who is at or has just left school



are members of certain religious communities that meet specified criteria



is in prison (except those in prison for non payment of Council Tax or a fine)



are in the Armed Forces & own a second home in Wales



is residing in hospital or a care home



are staying in hostels or night shelters



Or live on your own



Or you are on a low income

Conwy has discretionary power to vary discounts in exceptional circumstances; for example, following flooding, under section 13a of the Local Government Finance Act 1992



There are a number of properties on which you do not have to pay Council Tax. They include properties that are -

- Unfurnished (exempt for 6 months)
- Unoccupied & owned by a charity (exempt for 6 months)
- Unoccupied & undergoing or in need of structural repair or major alterations (exempt for 12 months)
- Unoccupied & are waiting for probate or letters of administration to be granted (exempt for up to 6 months after)
- Left empty by someone who has gone into prison, hospital or residential care home
- Left empty by someone who has moved in order to provide or receive personal care
- Left empty by students
- Repossessed
- The responsibility of a bankrupt's trustee
- Empty because their occupation is forbidden by law

However where a property has been left empty for longer than 6 months or is classed as a second home no discount will apply. An additional 25% Council Tax Premium for Second Homes & a 50% premium for Long-term Empty Homes will be applied from 1st April 2022.

Universal Credit

The Department for Work & Pensions have been nationally rolling out Universal Credit Full Service since May, 2016.

Universal Credit Full Service is now operational in the whole of Conwy County Borough.

Click on the following link for more information www.conwy.gov.uk/universalcredit

For information on how we use your data, visit www.conwy.gov.uk/council-tax-privacy-notice

BE DIGITAL

Conwy is modernising

Did you know Conwy offers the following services?

E-Billing

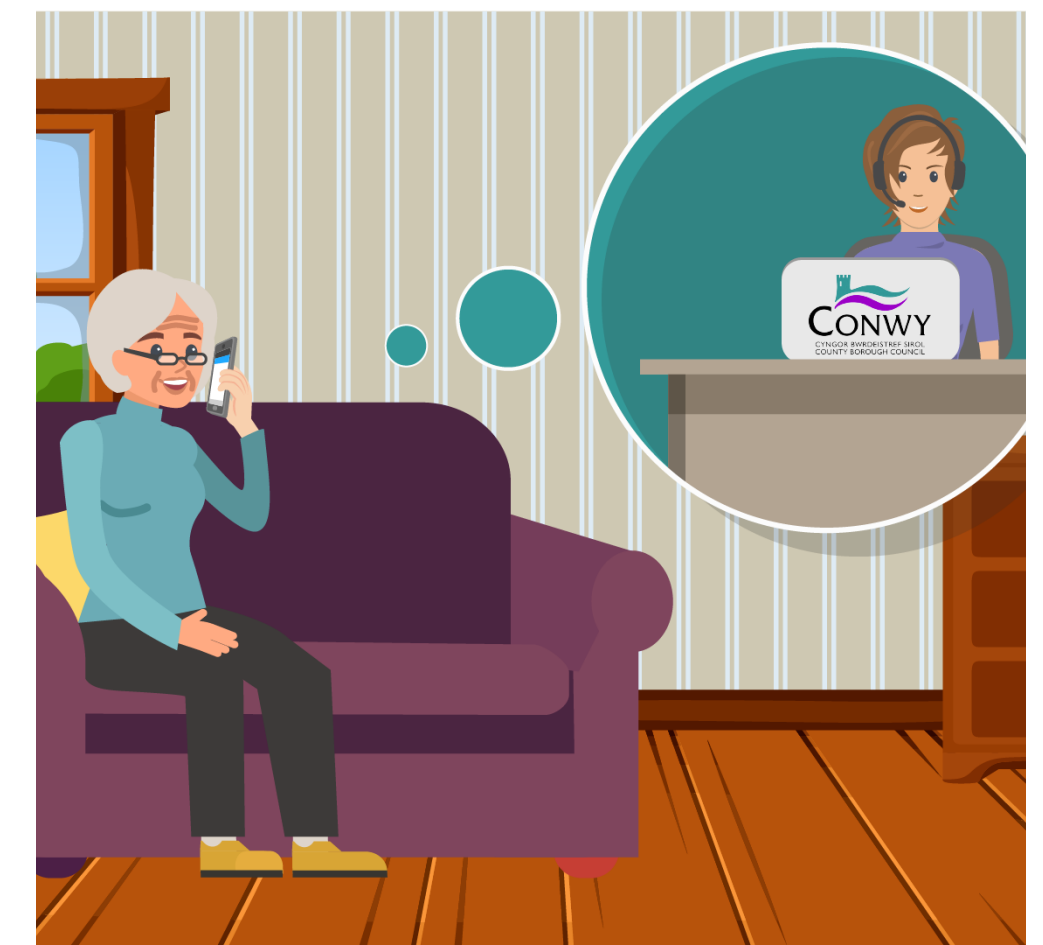
Conwy County Borough Council can now offer you the option to receive your Council Tax bill by e-mail rather than through the post.

Visit www.conwy.gov.uk/e-billing to find out more!

Direct Debit

Direct Debit is the easiest method of payment for Council Tax and is the preferred option for more than 84% of the Council Tax payers in the Authority!

Visit www.conwy.gov.uk/direct-debit to find out more!



www.conwy.gov.uk/council-tax



counciltax@conwy.gov.uk



01492 576607



Textphone: Dial 18001 + the number of the service you want to contact

Write to Us

PO Box 1
Conwy
LL30 9GN

Visit Us

Coed Pella
Conwy Road
Colwyn Bay
LL29 7AY



maethu | foster
cymru | wales

Conwy

01492 576350

maethu@conwy.gov.uk
fostering@conwy.gov.uk

conwy.maethucymru.llyw.cymru
conwy.fosterwales.gov.wales




CONWY

CYNGOR BWRDEISTREF SIROL
COUNTY BOROUGH COUNCIL