

What's Changing in Conwy's Learning Communities?

A new 9-year modernisation plan for 2026–2035

A summary



Conwy County Borough Council wants to make sure our school buildings and education facilities encourage learning and are healthy places to thrive.

So, we've developed a new 9-year modernisation plan — Strategy for Modernising Learning Communities.

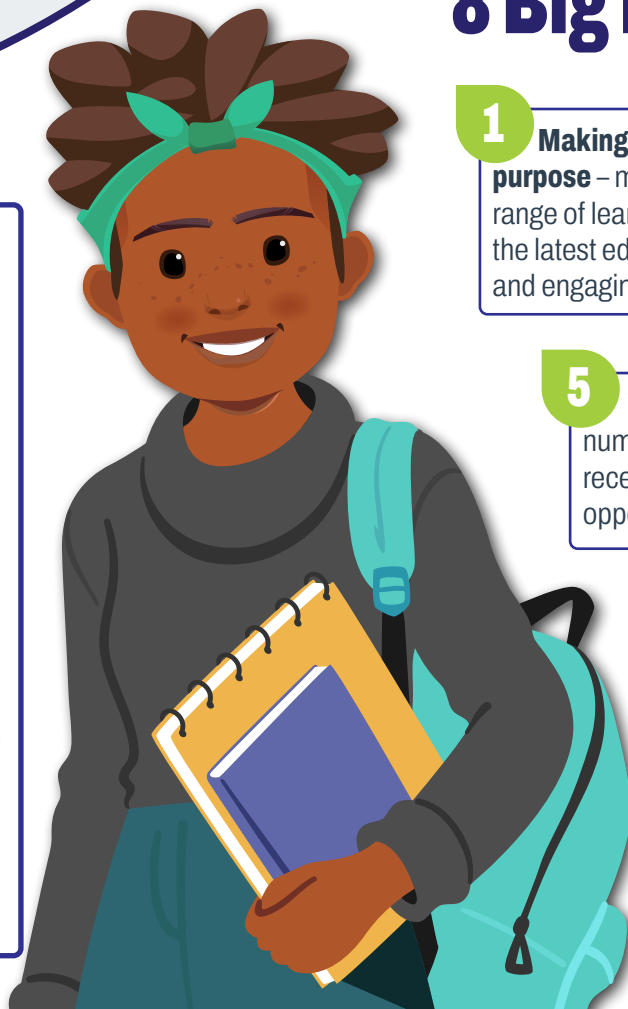
It builds on what's worked since the last plan in 2010. It covers everything from improving school buildings, dealing with challenges, Welsh language provision, funding, and how education facilities connect to their communities.

This tells you about the plan, and we want to know what you think.

Challenges

Some of the things that are driving these changes.

- ➡ There are 18 small primary schools (under 91 pupils). This makes it harder to use resources efficiently and well. We need to make the most of our resources so we can help all learners.
- ➡ Pupil numbers across Conwy have dropped so, we need to do something about it.
- ➡ Some buildings are in poor condition and expensive to run. Repairs alone won't be enough.
- ➡ The new curriculum needs time, resources, and space to succeed fully.



Vision for the Future

In Conwy our learning communities are dynamic, inclusive and resilient. They are:

- **full of energy and life** — where teaching and learning thrives so pupils reach their full potential
- **welcoming and open** — where pupils feel like they belong and inspired
- **strong and sustainable** — engaging families and the community and supporting activities and lifelong learning.

8 Big Priorities

1 Making education facilities fit for purpose — making sure pupils have a full range of learning experiences. This includes the latest educational technologies and safe and engaging outdoor play areas.

2 Additional Learning Needs — working together to make sure all pupils can reach their goals.

3 Fewer unfilled places — making sure our primary schools have more than 75% of their places filled and can make the most of their funding and resources.

5 Welsh language and Culture — increasing the number of Welsh-medium places in nursery and reception classes and making sure there's more opportunities for Welsh medium or bilingual learning.

4 Post-16 education — reviewing class sizes so all young people have the best support to succeed.

6 Finances — working with education facilities so they are sustainable. This includes helping them make the most of funding, cope with the rising running costs and be energy efficient.

7 Net Zero by 2030 — making school buildings greener for Net Zero.

8 The new curriculum — giving schools the spaces, equipment and tools they need to deliver the new curriculum and help pupils achieve.

To meet these priorities we could:

Build a new area school

This would involve closing existing schools and building one new school to serve the whole community in that geographic area.

Support schools to work together

Multiple schools can informally, or formally work together either by amalgamating or federating.

Include specialist support units within mainstream schools

We plan to develop 'Satellite Provision'—specialist units based in mainstream schools to support pupils with additional learning needs. This allows children to benefit from inclusive school life while easing the pressure on Conwy's only special school.

Create an all-through school

This means joining existing schools together to form a single school, with one Headteacher and one Governing Body. It can support a smoother journey for pupils from early years through to secondary education.

Close a school or schools

In some cases, closing a school may be the decision made — after fully considering other alternatives and following proper consultation.

The plan

We can't do this all at once, so we've divided it into sections.

Short term
Years 1-3

Medium term
Years 4-6

Long term
Years 7-9

Your Voice Matters

Any big changes – like merging or closing education facilities – will include:

- Public consultation (you get to have your say)
- A clear legal process with timelines
- All views, risks, and impacts.

What it means for families

- More community use of school facilities
- More opportunities for childcare on school sites
- Smoother transitions for children
- More inclusive Welsh-medium opportunities
- A more joined-up learning experience
- More opportunities to enjoy outdoor learning experiences
- More opportunities to connect to after school clubs and youth services
- Improved learning environments

What it means for education facilities

- Stronger leadership
- More collaboration across staff teams
- Better use of resources
- Efficient governance
- Improved school administration
- More use of digital systems benefit from Hwb funding
- Financial efficiency
- Environmental improvements

What do you think about this plan?

Scan the QR code or click the link to fill in the quick survey.

