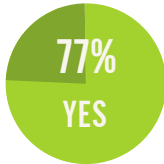


21st Century Schools Engagement results

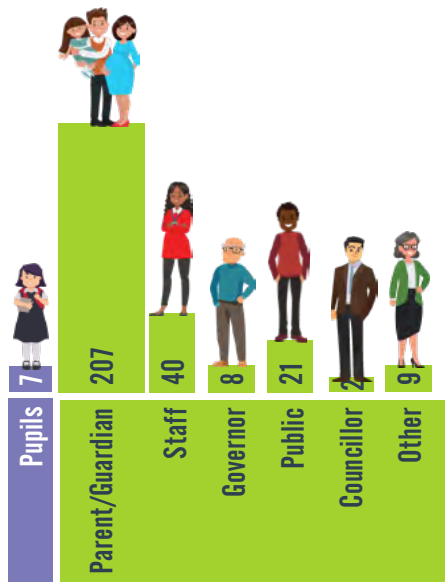
Abergele

Do you think building improvement is required?



What school are you linked with?

Ysgol Glan Gele	74
Ysgol Glan Morfa	94
Ysgol St Elfod	96
Ysgol St George	7
Ysgol Emrys ap Iwan	79
Creuddyn	6
None	4

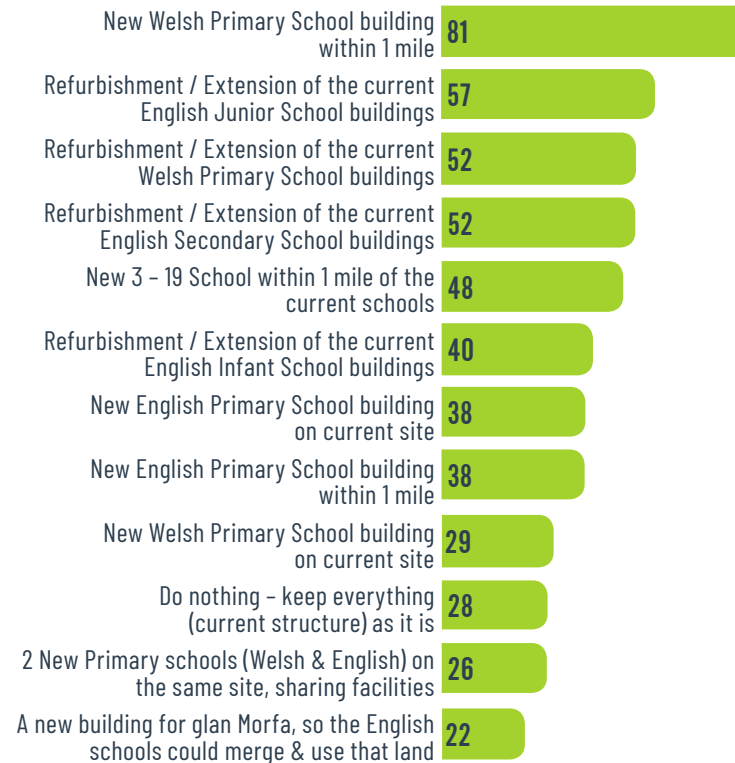


Who took part?

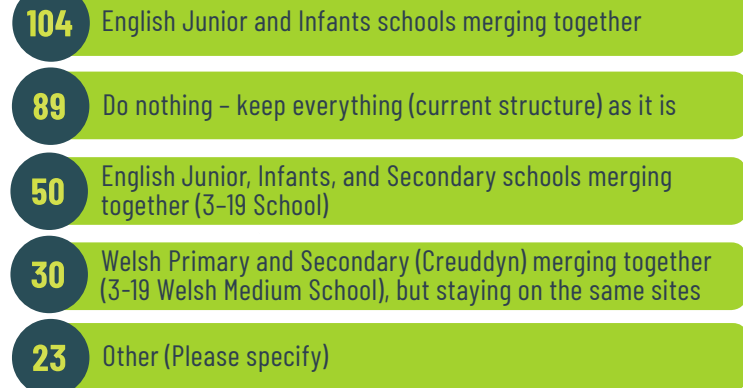
How far away from the current school sites would you be willing to travel to any new school?



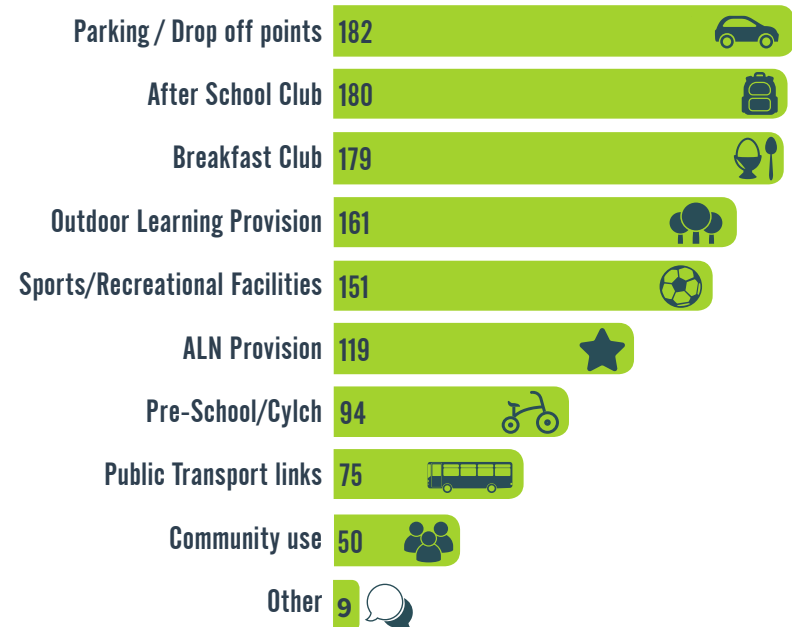
What would you like to see?



In terms of school organisation change, which of the following would you like us to look into further?



What 'additional' services are important to you in a school?



Is building improvement required at your current school?

Some responses

There should be a close working relationship between primary and secondary with shared resources to enhance the transition located on the same site or close by.

You need to merge the English infant/junior, build a new welsh primary on another site in the town therefore freeing up the current site to develop the new merge English offer. You need to be mindful of changes in the town could have an effect on smaller schools such as St.George- here small improvements such as a toilet in the house could make a big difference. It is important to maintain a balanced offer in the town which covers English and welsh medium and a church offer.

I do not feel there is a benefit for 3-19 schools this was proposed in Wrexham where I teach a few years ago and was widely opposers. It brings so many things to consider, how do you keep the different ages apart? How do you manage staffing when there are peak and dip years. How do you manage class sizes, timetables? Getting all pupils through lunch/break? Site would need to be large is there a place for this. There would be an implication for staffing.

The benefit would be a continuous curriculum, joint policies and procedures, shared expertise between phases, better continuity in pastoral and all aspects of education.

To reach the government's target to reach a million Welsh speakers I believe a new Welsh 1st language primary school is needed to support this in the community.

This option makes the most sense for promoting the new curriculum changes. Most students go from st Elfod to Emrys. The school buildings are in a densely packed area with poor infrastructure and limited solutions. By building a new school on the outskirts of Abergele these plots can be developed for housing needs.

The current situation of the 3 primary schools on one site is causing serious and dangerous driving problems local to the school. It would make sense to have the current land for the use of the two growing English schools and to move the Welsh school away from the site

The current 3 school site opposite Emrys ap Iwan secondary school is not appropriate moving forward because of congestion and safety of children before and after school. The current Ysgol Glan Morfa site depends on temporary classrooms and is therefore not fir for purpose. Building on this site would involve losing limited outdoor area needed for Health and Wellbeing of children. Cylch Meithrin and Clwb y Morfa also contribute to the attractiveness of this Welsh medium primary school to parents and these must be maintained on same site as the school.

Abergele needs a specialist asd unit in all schools within the community

Stop outsourcing maintenance in your schools and hire skilled care takers who have the ability to work in house and in turn, hugely reduce costs. A maintenance team that works across multiple sites would be the most financially beneficial.

Glan morfa is an amazing school that is unable to progress on the current site. Currently they do not have their own working kitchen & not a lot for outdoor play/education. I feel that all schools would benefit from glan morfa moving to a new site. I also believe that this would elevate some of the traffic issues.

I think it makes sense to share resources where possible

I feel the appearance of Emrys ap Iwan very dated and feel it is in desperate need of a refurb. It's a shame as the school is very good otherwise.

Extension or new school maybe within 1 mile

Other responses

I feel, personally, being both a teacher and parent myself, I disagree wholeheartedly with the proposal of merging schools and making one big super school. I chose a small village school for my own child and I think it's important to give parents that choice. I decided against sending my child to the local school in our town because I felt it was too big and I wanted a smaller, family feel school for my child.

I personally think having a new welsh school would be the best outcome. The traffic is dangerous for all 3 schools together. There are not enough welsh speaking children and adults in Abergele. Glan Morfa school has limited spaces so parents don't get a choice. Glan Gele and St Elfod could then use Glan Morfa ground for parking and alleviate traffic within the streets by and around the school.

Parking or drop off would be great in an ideal world. The current site if the 3 schools is very busy and I believe dangerous as there are no facilities and parent take risks with their parking

Welsh facilities for Abergele community are very very poor especially in comparison to the English facilities.

Current road conditions are dangerous. Near misses on a daily basis with cars and larger vehicles mounting curbs and pavements on ffordd y morfa and faenol Avenue. It needs to become one-way system. Also, frequent dog poo

on the pavements near the school is a health and safety risk

I don't feel the current schools in Abergele make use of the space. The welsh school is nowhere near big enough. I chose to put my daughter into a welsh medium school even though our first language is English. I do not feel that either English nor welsh school is big enough to accommodate the number of children currently and going forward living in the area.

There are 4schools within 100m of each other; serious parking and traffic problems at school times.

I feel that maintaining the welsh language is very important and that the Welsh school population has grown dramatically over the past 10 years which reflects that the locals of Abergele also feel the same. I do feel that the existing welsh primary school isn't big enough to continue this growth.

Ysgol y Creuddyn currently have a serious issue with their toileting facilities. Many of the toilet blocks are out of use and the standard of the toilets that are useable are of a very low standard. In regard to current issues in Abergele the thought of a building suited for 3-19 education sounds horrific. I chose to educate my children outside of Abergele despite living here due to the sheer size of the current schools. Maybe extending the current schools and amalgamating the junior and infants' school would be beneficial.

Ysgol Emrys Ap Iwan is a fantastic school with truly inspirational teachers and staff. I wish I'd discovered it earlier.

I chose Ysgol Glan Gele for my son due to its excellent outdoor provisions, I do not want to lose this. ALN provision is extremely important to both my child and all other students/staff within the school. My son has autism but very often the school are unable to meet his needs due to overcrowding, over stretched staff and lack of resources. My son would not be able to attend this school if there was no breakfast club as I have to travel to work so need to leave home early.

With all the new houses being built in Abergele. I think that the school road should be pedestrianised as the number of cars, vans etc on that road is ridiculous. I think the surrounding roads should be a one-way system.

Afterschool club at Ysgol Glan Gele would be valuable as my child currently has to travel some distance to nursery after school. Glan Gele breakfast club is excellent and very much valued. Diolch/Thank you

Bigger staff car park is needed for all 3 schools as disabled parents or children can't get parked as there is already double parking.

I am very happy with how the school is now.

Size of classes need to be capped. No combination classes eg. reception and year 1 Build either new welsh school or new English school and keep others on present site. Don't split infant and junior English schools

I would really like to see Glan Gele become an infants and juniors merging together.

Have you considered lack of engagement is due to people having no faith in you listening to their views. You have repeatedly been told Abergele schools are full and not listened - even stating they are not. It took months to organise a mobile for Glan Gele despite being told well in advance space was needed and it looks like the same will happen again in September!

I think it would be fantastic if St Elfod merged with Glan gele and began to offer the same quality of education as Glan Gele do. They could then provide consistency throughout the children's primary school education. Also, the parking for Elfod/Gele/Glan Morfa needs looking at urgently!!!

If a new building is required, it would really need to be 2 storeys. With a good dropping off point.

Abergele schools are cramped, new schools are need and also a catchment area. Schools have not been updated in the 20+ years to accommodate the town and new houses. Parking is a real issue.

I don't have a strong view on way forward but keen to learn more about options

Ysgol St Elfod is an amazing k5 2/3 school. Teaching staff are amazing school facilities are good. But there is always room for improvement. Car parking is non-existent, and I struggle to deliver my children to schools appropriately and sometimes on the time because of this.

Consider moving Llandrillo College further out of Abergele and use that space for a new Welsh English School.

Glan Gele in my opinion is demonstrating exactly what our children need in education. In my opinion this is lacking in Elfod. A merge of the infants and primary would no doubt benefit the pupils.

Already travel 3+ miles already. I struggle to get my child to school because no transport provided until secondary school level even then the transport does not cover where I live, and we have to use the unreliable public transport which affects the children's attendance. These schools are excellent, I would not want my children moving to new schools in the area.

The safety of our children is paramount!!! with this we will have to put it high on our list. Therefore having 3 junior schools together with no parking (not much anymore) causes a major problem of safety.

A Nursery within Conwy have farm animal and also a veg patch where the children tend to them. I think schools should try to invest more into teaching the importance of natural growth by having hand on experience/jobs.

Ysgol Glan Morfa doesn't have a Breakfast Club which I would like. It's important to us with childcare. The current parking situation is terrible, and we have to park far away from the school, this needs to change.

Nothing to add, Ysgol Glan Morfa currently provides everything we need for our child. Clwb y Morfa provides excellent care both in the mornings and after school. The school is location is perfect for our needs and see no reason for any changes.

3-19 schools are proposed in Wrexham CC and soon the council saw lack of reason for it. Logistically how do you cater for all students on one site? Where would you locate a 3-19 school either Welsh or English medium, when the local school are at capacity and land hard to find. Unions would not support 3-19 framework.

I feel it is important to invest in the Welsh Medium schools in order to ensure the welsh language is maintained and even increased by 2050. This will help the million welsh speakers drive. I don't personally speak welsh but want my children to speak the language. I feel investing in the school will encourage other parents to do the same.

The current arrangement of the 3 primary schools on one site next to a secondary school with all schools full must be seriously considered. I would like to see the Welsh medium school given priority as it is growing and growing at a significant rate. Ideally, I would like a new Welsh school on a new site with the county showing commitment to developing the resources of the Welsh school.

The Welsh school at Ysgol Glan Morfa has more children appearing every year and if they have to build more in the future, the children will lose more of the playing field. It's time for the Welsh school to have more fair play and it's important to keep a Welsh school here in Abergele. I am not suggesting that mixing primary and senior children in any school is a good idea.

Thank you to everyone for taking part and adding to this process.