

21st Century Schools Engagement results

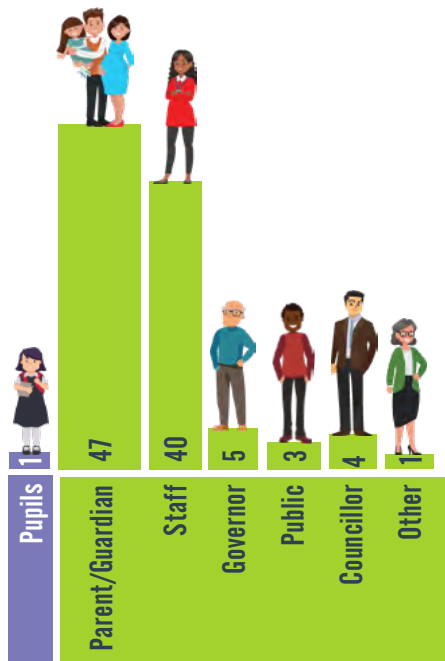
Kinmel Bay

Do you think building improvement is required?



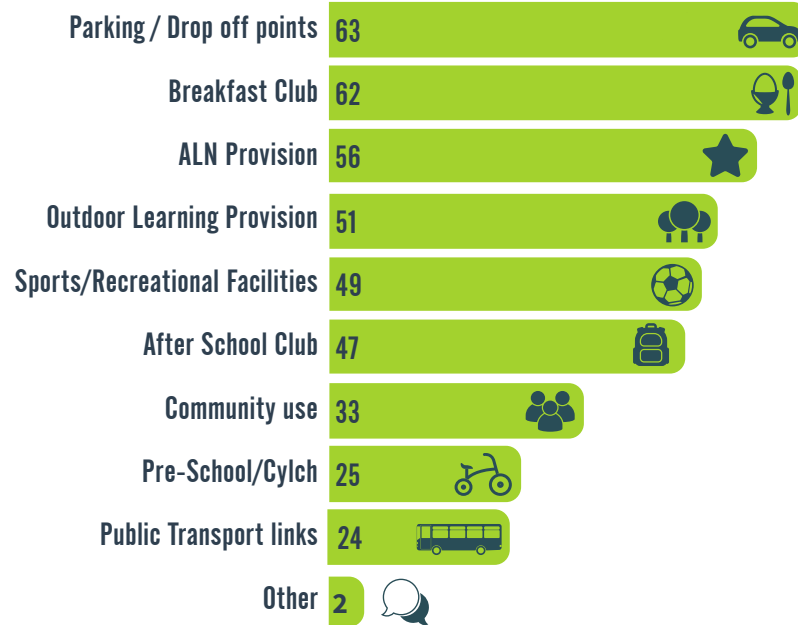
What school are you linked with?

Ysgol Y Foryd	71
Ysgol Maes Owen	40
Ysgol Emrys ap Iwan	11
None	0

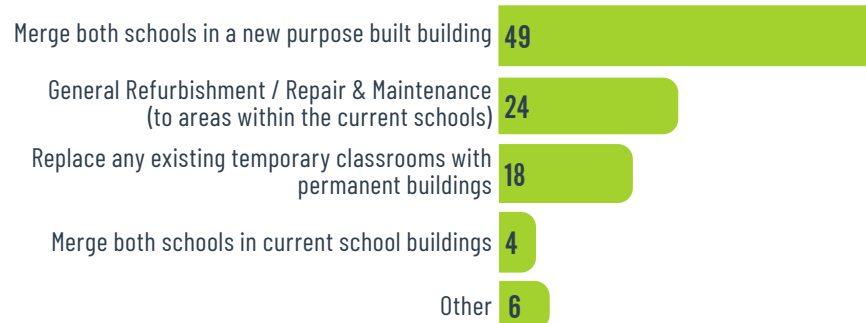


Who took part?

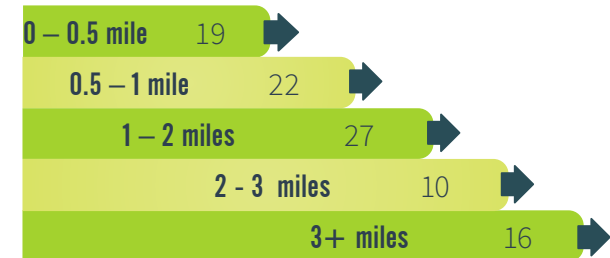
What 'additional' services are important to you in a school?



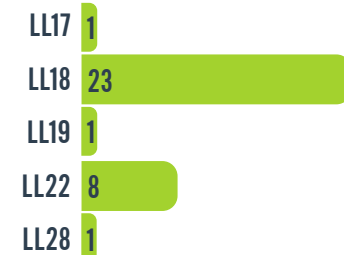
What would you like to see?



How far away from the current school sites would you be willing to travel to any new school?



Postcode of respondents



Do you think that building improvement is required at your current school?

Some responses:

Existing school buildings are old.

With proper funding so that staff don't feel threatened about losing their jobs. Stop cutting funding.

Refurbishment is needed in the first instance as the buildings are tired and Y Fforyd doesn't have a kitchen. A new building is the only way forward for our local schools in Towyn and Kinmel bay. To provided provision for outside of schooling.

With proper funding so that staff don't feel threatened about losing their jobs. Stop cutting funding.

While new buildings would be ideal it is probably equally important to do redevelopment in a way that enables the two schools to retain their unique identity.

Our pupils/community need their aspirations to be raised. To be awe-inspired and invigorated every day by their surroundings. A new building would give this. Our pupils deserve facilities that will enable school staff to equip them for the future.

Would require more info before giving my opinion

Ysgol Maes Owen is definitely in need of updating and y Foryd need more space, merging would be ideal. Happy with Emrys ap Iwan as a site.

It works very well as separate schools and would prefer them to remain that way.

Rebuild as we are at the moment we do not work closely together. One merged school could/would lead to staff not having jobs. ie 2 heads now into 1

Clear benefits of amalgamation to assist with the transition, neither school can be successfully refurbished for changing curriculum

There is ample land where the leisure centre is situated and rear of both schools. Also, you have unused site on Kinmel Bay industrial park which would also elevate traffic problems as you could implement a drop off system for cars etc

It would be great if both infant school and junior school were one managed by one head teacher with the same vision

General comments

Tir Ilwyd has excellent infrastructure. The primary problem at the existing site is safe vehicular access.

The new building needs to engage the community outside of school hours it needs to be open for community groups and healthcare professionals (counsellors community nurses) it needs to be green in construction and in running.

We have ample space on our school site.

Community involvement at this stage is crucial, library service is essential and need to be part of. Nursery is essential, need to be maintained. Special needs community buildings ie- community, council offices (town council) Library, Health Housing stock However future plans need to take account of the flood plane

There is definitely a need to modernise and hopefully merge ysgol y Foryd and Maes Owen. I

feel that the land the 2 schools is on is ideal for this, with potential scope to use the leisure centre as well. I feel the school is in the heart of the community and accessible to all. And the flood risk is less than in the other potential areas.

Concerns of job cuts if the schools merge. Also, the quality of the Y Foryd infants to change. Many like an infant school for young children

To myself but it would need to be kept as close as possible. It would be wonderful to see money from the 21st century schools programme being spent here in Kinmel Bay/Towyn. The 2 schools currently are not fit for purpose for modern demands of the school curriculum. I would love to see one amalgamated school here for children from aged 2.5/3 up to 11 years.

Both schools have served the community well and continue to do so. However much more could potentially be achieved by working together in new fit for purpose facilities. This would allow for more potentially more community uses, particularly given the links to community first areas to ensure the school is at the heart of the community.

Definitely don't think infant and junior school should be merged as asked in question 4. Feel as though the current position of the schools being separate in a valuable asset.

It would be great if infants and juniors merged together like other schools

Parking is a big issue - accident waiting to happen. Should be pick up/drop off point.