

# 21<sup>st</sup> Century Schools Engagement results

## Llandrillo yn Rhos

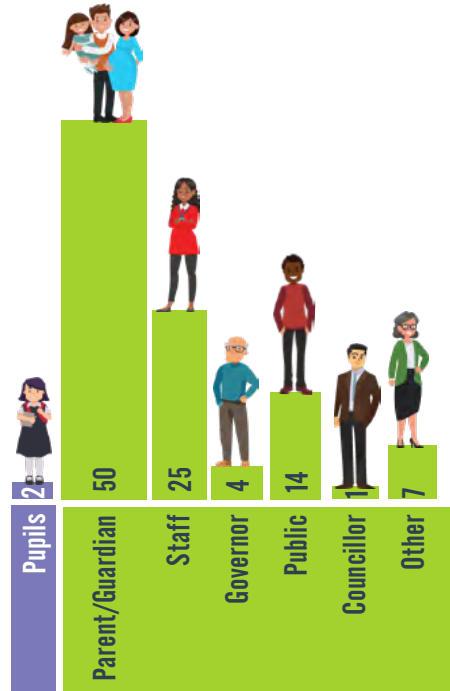


Do you think building improvement is required?



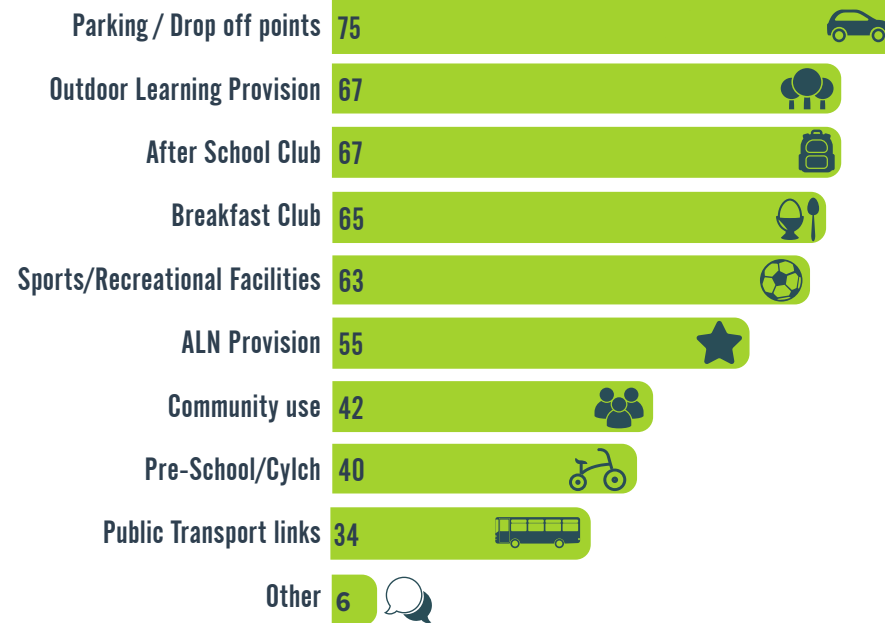
What school are you linked with?

Ysgol Llandrillo	84
Ysgol Eirias	9
None	1
Other School	9

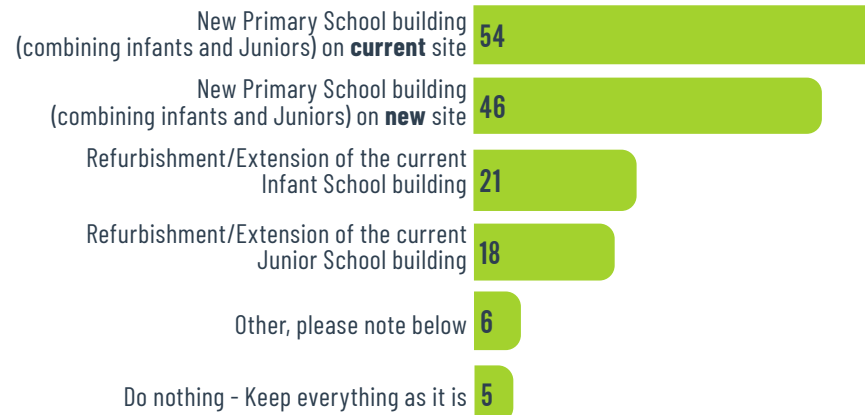


Who took part?

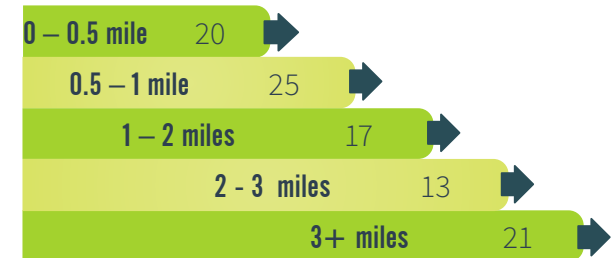
What 'additional' services are important to you in a school?



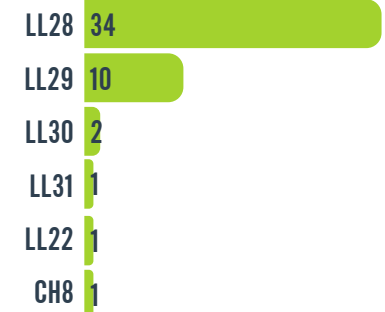
What would you like to see?



How far away from the current school sites would you be willing to travel to any new school?



Postcode of respondents



Do you think that building improvement is required at your current school?

**Some responses:**

Reusing as much as possible of what we have - but making everything for purposes Both sites to be together.

- Separate halls for dining and PE etc. (with decent acoustics)
- Good sized performance space for Expressive Arts sessions including stage and seating if possible
- Staff car parking
- Bigger classrooms
- More separate rooms for ALN/sensory/meetings etc,
- Maintain outdoor learning environment (i.e. keeping trees etc.)
- Level playground with more space
- Library
- More readily available ICT resources (i.e. iPads, laptops etc.)

I don't think extension of the current school is required. People from outside the catchment area are attending which demonstrates the school can cope with the community requirements.

If there is money available I think it would be good to combine the infant and junior sites. With more outdoor areas for sports for them, and maybe better parking facilities for parents.

There is not enough space on the infant site for an extension. This is the same situation for the juniors

I would have liked to know more before answering this really. I don't know what is required or not. For example, how are the areas of both schools currently used? What are the practical issues faced by staff and pupils? Are the older buildings costly to run/for upkeep?

I feel the school is too small for the number of children attending. And at school drop off time and pick up there is too many cars and they don't care where they park.

Current site would be very difficult as presently a split site. A new single site building has been wanted since the two schools amalgamated. It would also provide a seamless journey for 4-11 year olds in line with the new proposed curriculum.

Modernisation of the current buildings, better provisions, redecorating, better secure grounds, fences etc

One site would be good although that would mean many more children on site.

Ideally current site, if road closure is an option, but otherwise a new site.

I personally wouldn't like to see the schools combined into one purely because I like the small group and the feel of the school. I know my child wouldn't cope well within a larger infants environment

Current location of the school is fantastic however the buildings are fairly old and looking tired. A new school on existing site would be perfect.

The school cannot continue to function as effectively as it does if numbers continue to rise and nothing is done so that is not an option, I would prefer an option which would disrupt the children's lives too much,

New builds are always better, a great opportunity to start fresh and a building built for true purpose. I do like the two sites as I believe it removes some of the schooling pressures and can make the school experience less daunting within a shorter timescale...the kids don't have to wait until year 6 to feel like they are senior.

Same site very important for ethos of school and pupil mixing

I am concerned about the loss of playing area by expansion/extension. The extensions to the junior site over the years have had a big impact on this already.

We need a sports hall that is separate to the dinner hall as we currently lose a lot of time waiting for staff to have cleared the hall.

A new purpose built school would be great for the pupils and staff -at present there aren't the facilities to bring the whole school together at things like Christmas concerts due to limitations in space.

Keeping the natural surroundings is important. Outside space accessible from every classroom. Parking and access for all. Both sites on the same plot.

I would like to see more community facilities to make the school the heart of the community.

Ensure enough room to allow wrap around and after school club to have the volume of children we currently have, with outside space.

As much use as possible of sustainable materials. Extend the existing solar panels. If there are no mature trees, trees will need to be planted. The pupils gain enormous benefit from the forest area with the pond - Eco area with raised beds, the treehouse and raised beds.

It would be good to have a pre-school facility on site as well as having the school infant and juniors together

Safer/Drop off/Parking area needed. Bigger Hall as it is a squeeze to get all the children in. Wider corridors also. Building is outdated. Access also needs changing.

All the facilities currently offered are excellent and need to be maintained. Safer drop off facilities and or car park area needed. Combining the schools to make one primary school would be ideal.

Although my preference is to remain on the current site in the heart of the community. The existing school runs most of the additional services which are to be commended. However, the building utilities such as Boilers, Heating, Kitchen are failing on a regular basis.

Kitchen for lessons (low work tops) Washing Machine Quieter dryers Pod for ALN children

All of the additional services are required. The school is a large school with pupils from across the community from all sorts of different backgrounds. It is important the facilities of the school reflect the requirements of working parents, single parents, grandparents, children who need additional services, a proper drop off area. The school facilities need to reflect modern life and modern requirements and still be able to be an asset to ALL in the community.

School halls can generate extra income when established and managed correctly.

I wouldn't want my children having to move to a different site whilst any work was being carried out and I wouldn't want to relocate them to a new school. We love our school but would like to see it given a bit of care and attention

Bigger classrooms, better disabled access, 4g pitch, improved plumbing & toilet facilities, parking, improved ingress & egress, drama/dance/sports hall (separate to the dinner hall) quiet/sensory room.

Several access points for pickup at home time. Parking facilities for staff Classrooms with their own toilets and cloakroom. A safe playground which is flat. Better disabled access. 2 or 3 large halls A dining room which is separate to the halls. Plenty of spare rooms for interventions. Dance studio Changing rooms Male and female toilet

Space for additional groups Storage Outside areas-forest school, treehouse, hub Good sized classrooms Separate playgrounds Cloakrooms and toilets for each year group Stage area Cleaning cupboards for staff to access

Improved dropping off and onsite parking. In my opinion the building is outdated, far too small and not fit for purpose. We need more classrooms, bigger

playground, changing facilities to encourage health and well being- running riding to school

I would prefer the school to remain on this site,

More safe exits to release children at the end of the day are required. It would be wonderful to maintain the standard and amount of outdoor areas available Staff car park with electric charging points. Safe bicycle storage/locking points Solar panels or similar. Outdoor areas connected to all classrooms for both juniors and infants Toilets for all age groups with designated storage areas for lunchboxes, coats, etc More teacher toilets, cloakrooms, staff shower. Staff room central for all classes to access Good sized, airy and light classrooms Flat playground areas with appropriate equipment Large hall with decent acoustics

It can be difficult for parents who need to drop off at the school as it can get very busy and there is no room for all to park. I live in walking distance so am fortunate but I can see how busy it can get and this is a safety concern too

We have a wonderful teaching and support fraternity at this school so a building built for a modern purpose would improve the school experience for all. Plenty of room, opportunity to play, lots of natural light, a building that utilises natural resources/energy, sensory rooms to help those who have additional needs. Buildings that meet the requirements of current technology and is prepared for future technological development. Also modern facilities for the kitchens and cleaning teams. Comfortable space for teachers to take their rest period or where they can have private meetings and privacy to complete outstanding work uninterrupted. A community hall which can be easily booked and utilised by the community but which does not create a burden for the school. Possible new road system that would facilitate easy drop off for kids, similar to a bus lane

whereby parents can drive in to where children can be met and safely escorted inside. We should look at what private schools offer and what facilities they have; the local college; and also the local special needs school....let's pinch some great ideas!

Provision of breakfast club from 7.30am would be useful for working parents

Happy with the current school provision / clubs but the school is very old and would be better rebuilt.

Community use and public transport links would be useful

Keeping class sizes down is always an important consideration.

Thank you to everyone for taking part and adding to this process.

